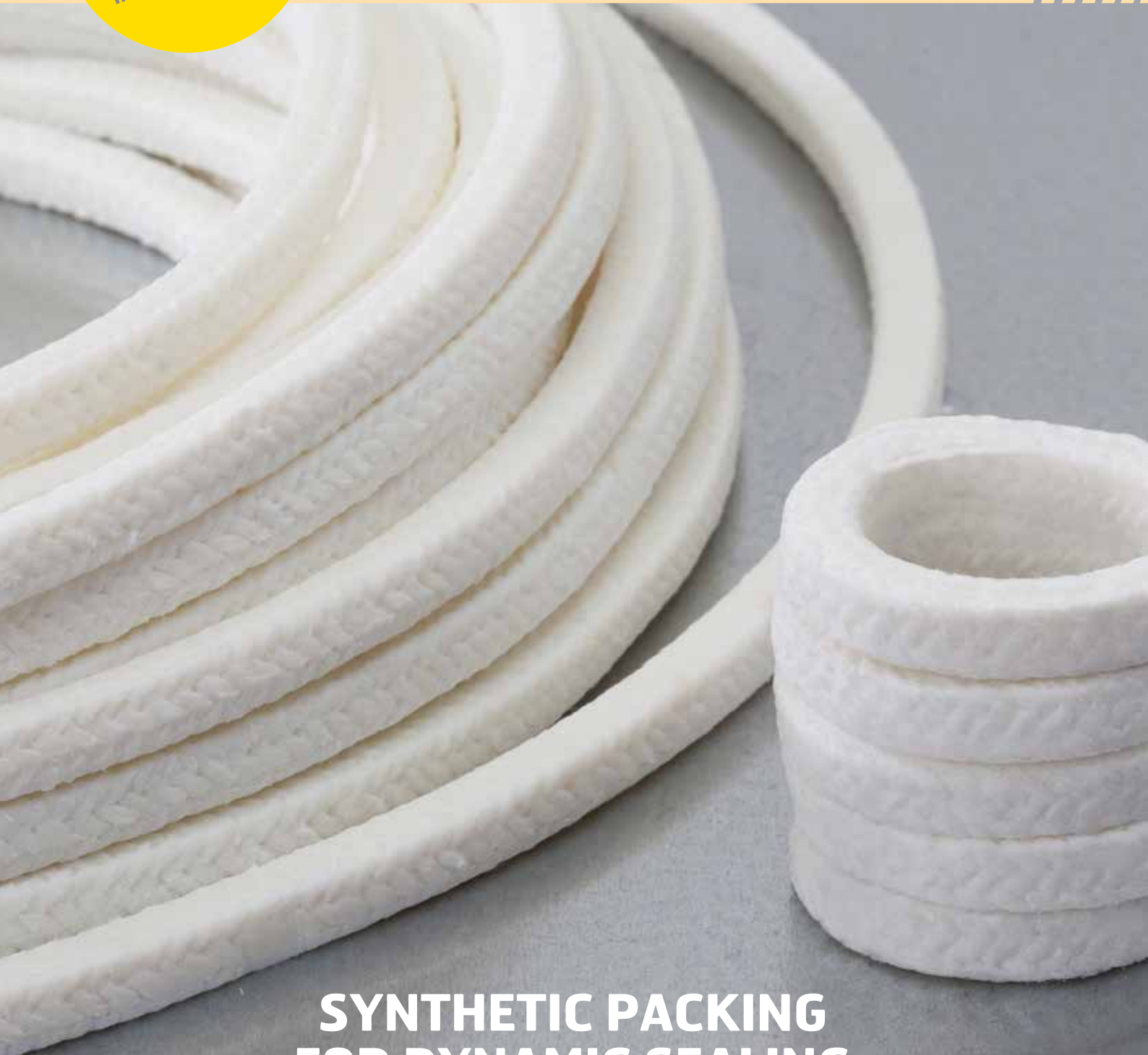




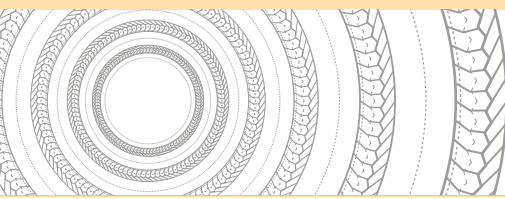
BRAIDED PACKINGS & RINGS

LATTYflon 2790



**SYNTHETIC PACKING
FOR DYNAMIC SEALING**





LATTYflon 2790

BRAIDED PACKINGS & RINGS

Synthetic packing for dynamic sealing.

Characteristics

- ▶ Packing made of technical polyacrylic yarns, each single yarn being impregnated with PTFE using our exclusive Filcoat-process. The packing is then re-impregnated during braiding operation in a bath consisting of PTFE mixed with inert lubricants.

Advantages

- ▶ Silicone-free
- ▶ Easier assembly
- ▶ High stability
- ▶ High elasticity
- ▶ Resistance to wear and abrasion
- ▶ White packing
- ▶ Hardly abrasive for the sleeve

Approval

- ▶ CE 1935/2004 (on request)

Equipment

- ▶ Pumps

Industries

- ▶ Food processing
- ▶ Petrochemicals
- ▶ Pharmaceuticals
- ▶ Chemicals
- ▶ Sugar
- ▶ Paper
- ▶ Power stations
- ▶ Shipbuilding

Parameters (not associated)

- ▶ Temperature: -50°C to +260°C
- ▶ Pressure: 0 to 100 bar
- ▶ Speed: < 15 m/s
- ▶ pH: 1 - 13

Dimensions

- ▶ Available in square section from 6 to 25.4 mm.
- ▶ On request, available as preformed rings.



The information given in this document is for guidance only and does not commit LATTY international in any way. LATTY international does not warrant the performance of its products, unless properly fitted and used in accordance with the instructions, nor can it accept any claim for consequential liability.. LATTY International S.A. is only liable for the quality of its products as it does not involve itself in their fitting or use, which must be done in accordance with the instructions.

Réf. : 21207 (10/2017) - LATTY BROU



Plant
1, rue Xavier Latty
F-28160 BROU, FRANCE
Tél. +33 (0) 2 37 44 77 77
Fax +33 (0) 2 37 44 77 99
customerservice@latty.com



www.latty.com

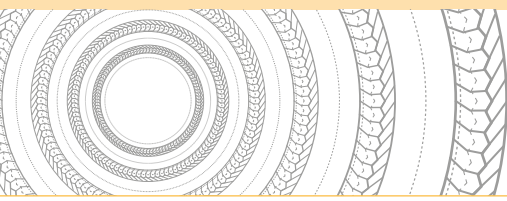


BRAIDED PACKINGS & RINGS

LATTYflon 7188



**HIGH-PERFORMANCE SYNTHETIC
PACKING FOR DYNAMIC SEALING**



LATTYflon 7188

BRAIDED PACKINGS & RINGS

High-performance synthetic packing for dynamic sealing.

Characteristics

- ▶ Packing made of phenolic compound yarns, each single yarn being impregnated with PTFE using our exclusive Filcoat-process. The packing is then re-impregnated during braiding operation in a bath consisting of PTFE mixed with inert lubricant.
- ▶ This process reduces frictions, improves the yarn chemical protection and therefore provides better sealing efficiency.

Advantages

- ▶ Very good mechanical characteristics combining both suppleness and robustness/
- ▶ Withstands abrasive contaminated liquids
- ▶ Very easy fitting operation
- ▶ Reduced running-in time
- ▶ Reduced retightening operations
- ▶ Technical yarns properties that limit sleeve heat and wear
- ▶ Silicone-free lubricant
- ▶ Reduced maintenance time

Equipment

- ▶ Rotary and reciprocating applications

Industries

- ▶ Sugar
- ▶ Food processing
- ▶ Paper
- ▶ Steel

Parameters (not associated)

- ▶ Temperature: -220°C to +300°C
- ▶ Pressure: 0 to 200 bar
- ▶ Speed: < 20 m/s
- ▶ pH : 1 - 13

Dimensions

- ▶ Available in square sections from 6 to 25.4 mm.
- ▶ On request, available as preformed rings.



The information given in this document is for guidance only and does not commit LATTY international in any way. LATTY international does not warrant the performance of its products, unless properly fitted and used in accordance with the instructions, nor can it accept any claim for consequential liability.. LATTY International S.A. is only liable for the quality of its products as it does not involve itself in their fitting or use, which must be done in accordance with the instructions.



Plant
1, rue Xavier Latty
F-28160 BROU, FRANCE
Tél. +33 (0) 2 37 44 77 77
Fax +33 (0) 2 37 44 77 99
customerservice@latty.com



www.latty.com