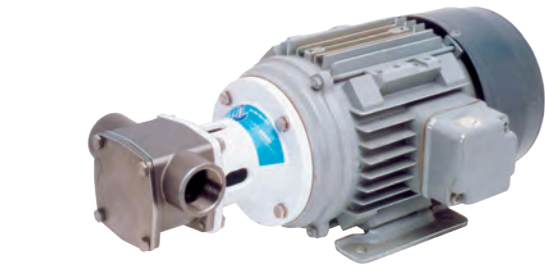


04 Flexible Impeller Pumps

STAINLESS STEEL PUMPS



28430 & 28440 Series



FEATURES

- Self primes from dry up to 16.4 ft (5.0 metres)
- Flows up to 52.8 gal (200 litres) per minute
- Pressure up to 58 psi (4.0 bar)
- Handles hard or soft solids - max. .36 in (9mm) dia
- Tolerates abrasive wear - replaceable wearplate
- Non pulsating flow, proportional to speed
- Handles viscosities up to 10,000 centiPoise
- Minimal shear to thixotropic fluids
- Fits IEC standard motor B3/B14, frame 90 (Model 28440)
- Easy to service and maintain

SPECIFICATIONS

SEAL	Carbon / Ceramic mechanical face seal
OPTIONAL:	Tungsten Carbide / Ceramic hard faced mechanical seal, Nitrile Lip seal on shaft sleeve, Carbon / Ceramic flushed seal, Tungsten Carbide / Ceramic hard faced flushed seal
SEAL ELASTOMER	Nitrile or Viton
PUMP HEAD	Stainless steel 316, as-cast interior and exterior finish
END COVER	Stainless steel 316 grade
SHAFT	Stainless steel 316 grade (Model 28430)
SHAFTS	Stainless steel 316 grade, shaft extension (Model 28440)
BEARINGS	Greased ball bearings (Model 28430)
BEARING HOUSING	Epoxy coated cast iron (Model 28440)
PORTS	1 1/2" (38.1mm) BSP internal thread to BS21 (DIN2999)
WEIGHT	19.2 lbs (8.7kg) (Model 28430)
WEIGHT	14.1 lbs (6.4kg) (Model 28440)
PRESSURE OPTIONS	Medium - Max 36.3 psi (2.5 bar) High - Max 58 psi (4.0 bar)
IMPELLER ELASTOMER OPTION	Neoprene E.P.D.M. Nitrile Viton* Neoprene E.P.D.M. Nitrile Viton*
PRESSURE OPTIONS	Standard - Max 2.5 bar High - Max 4.0 bar
IMPELLER ELASTOMER OPTION	Neoprene E.P.D.M. Nitrile Viton*



28530 & 28540 Series



FEATURES

- Self primes from dry up to 14.8 ft (4.5 metres)
- Flows up to 97.7 gal (370 liters) per minute
- Pressure up to 43.5 psi (3.0 bar)
- Handles hard or soft solids - max. .5 in (13mm) diameter
- Tolerates abrasive wear - replaceable wearplate
- Non pulsating flow, proportional to speed
- Handles viscosities up to 50,000 centiPoise
- Minimal shear to thixotropic fluids
- Fits IEC standard motor B3/B14, frame 100 (Model 28540)
- Easy to service and maintain

SPECIFICATIONS

SEAL	Carbon / Ceramic mechanical face seal
OPTIONAL:	Tungsten Carbide / Ceramic hard faced mechanical seal, Nitrile Lip seal on shaft sleeve, Carbon / Ceramic flushed seal, Tungsten Carbide / Ceramic hard faced flushed seal
SEAL ELASTOMER	Nitrile or Viton
PUMP HEAD	Stainless steel 316, as-cast exterior finish
END COVER	Stainless steel 316 grade
SHAFT	Stainless steel 316 grade (Model 28530)
BEARINGS	Greased ball bearings (Model 28530)
BEARING HOUSING	Epoxy coated cast iron (Model 28540)
BEARINGS	Uses motor bearings (Model 28540)
MOTOR ADAPTOR	Epoxy coated cast iron
PORTS	2" (50.8mm) BSP external thread to BS21 (DIN2999)
WEIGHT	32 lbs (14.5kg) (Model 28530)
WEIGHT	21.4 lbs (9.7kg) (Model 28540)
PRESSURE OPTIONS	Medium - Max36.3 psi (2.5 bar) High - Max 43.5 psi (3.0 bar)
ELASTOMER OPTION	3A Neoprene E.P.D.M. Nitrile Viton* 3A Neoprene E.P.D.M. Nitrile Viton*
IMPELLER ELASTOMER OPTION	Neoprene E.P.D.M. Nitrile Viton* Neoprene E.P.D.M. Nitrile Viton*

04 Flexible Impeller Pumps

STAINLESS STEEL PUMPS



30510 Industrial Stainless Steel Pedestal & Close-Coupled Flex Pump



Use where single or variable speed operation and 316 Stainless Steel material is desirable. Self-priming, 8 gpm flow, and debris tolerant. Nitrile impeller is ideal for oil based products. Use Neoprene for water and general purpose pumping. Use Viton for hydrocarbons and most solvents.

Optional EPDM impeller kit 7614-0002 for hygienic applications and some keytone solvents. Use Tungsten Carbide seal when pumping highly corrosive or abrasive fluids. Long lasting AC induction motor has no brushes to wear out. Do not pump gasoline or other flammable liquids. Motor is not explosion proof. Do not run dry.

For pumphead only models (30510-2xxx) select NEMA 56C Frame C-Face motor rated at ¾ hp at 1750 RPM with appropriate service factor. Motor must handle high axial loads. Front ball bearing locked against axial movement is recommended. Motor must deliver 1.5 ft-lbs and 4.3 ft-lbs torque minimum in forward and reverse directions respectively. Use only capacitor start motors.

For pedestal mount models (30510-0xxx) operating at 1750 RPM, select ¾ hp or 1 ½ hp motor for standard or high pressure impellers respectively, with an appropriate service factor. For high pressure impellers, the motor must supply 3 ft-lbs or 6.9 ft-lbs of torque minimum for forward and reverse operation respectively.

Rated flow is based on Neoprene impeller pumping water. Reduce rated flow 10% for Nitrile, Viton, and EPDM standard impellers. Reduce rated flow 15% for Nitrile, Viton and EPDM high pressure impellers.



SPECIFICATIONS

OPEN FLOW	8.2 gpm, 31 lpm			
VOLTAGE	115V AC 60Hz single phase, non CE			
BODY MATERIAL	316 stainless steel			
IMPELLER MATERIAL	Neoprene, Nitrile, Viton, optional EPDM			
SHAFT MATERIAL	316 stainless steel			
SHAFT SEAL	mechanical carbon or tungsten carbide on ceramic			
PORT SIZE	¾" (19mm) NPT(F)			
MOTOR	¾" (19mm) HP, TEFC AC induction type			
	56C frame, C face			
MAXIMUM PRESSURE	6 ft (1.8m) power cord, 3 prong grounded plug			
	thermal overload protected			
DRY PRIME	30 PSI (2.1 bar) or 70 ft (21.3 m) of head			
	60 PSI (4.2 bar) or 139 ft (42.4m) of head			
WET PRIME	Neoprene	Nitrile	Viton	EPDM
	8-10 ft (2.4-3.0m)	8-10 ft (2.4-3.0m)	4-6 ft (1.2-1.8m)	4-6ft (1.2-1.8m)
LIQUID TEMP.	45-180°F (8-82°C) Neoprene	50-180°F (10-82°C) Nitrile	60-180°F (15-82°C) Viton	45-185°F (7-85°C) EPDM
	45-185°F (7-85°C) EPDM			
SIZE: PUMP AND MOTOR	9 1/8" x 8 7/8" x 16" (230 x 224 x 403mm)			
PUMPHEAD ONLY	6 5/8" x 6 5/8" x 5 ¾" (162 x 162 x 145mm)			
PEDESTAL MOUNT	4 ¾" x 4 ¾" x 9 ¼" (120 x 120 x 233mm)			
SHIP WT. PUMP AND MOTOR	36 lbs (16.3 kg)			
PUMPHEAD ONLY	7.5 lbs (3.4 kg)			
PEDESTAL MOUNT	8.5 lbs (3.9 kg)			



30520 Industrial Stainless Steel Pedestal & Close-Coupled Flex Pump



Use where single or variable speed operation is desirable. Self-priming, 22 gpm flow, debris tolerant. Nitrile impeller is ideal for oil based products. Use Neoprene for water and general purpose pumping. Use Viton for hydrocarbons and most solvents. Optional EPDM impeller kit 8981-0002 for hygienic applications and some keytone solvents. Use Tungsten Carbide seal when pumping highly corrosive or abrasive fluids. Do not pump gasoline or other flammable liquids. Motor is not explosion proof. Do not run dry.

For pumphead only models (30520-2xxx) select NEMA H145TC Frame C-Face motor rated at 1-½ hp at 1750 RPM with appropriate service factor. Motor must handle high axial loads. Front ball bearing locked against axial movement is recommended. Motor must deliver 4.8 ft-lbs and 11.2 ft-lbs torque minimum in forward and reverse directions respectively. Use only capacitor start motors.

For pedestal mount models (30520-0xxx) operating at 1750 RPM, select 1-½ hp or 3 hp motor for standard or high pressure impellers respectively, with an appropriate service factor. For high pressure impellers, the motor must supply 7.9 ft-lbs or 16.3 ft-lbs of torque minimum for forward and reverse operation respectively.

Rated flow is based on Neoprene impeller pumping water. Reduce rated flow 10% for Nitrile, Viton, and EPDM standard impellers. Reduce rated flow 15% for Nitrile, Viton and EPDM high pressure impellers.



SPECIFICATIONS

OPEN FLOW	22 gpm (83 lpm)			
VOLTAGE	115/230V AC 60Hz single phase, non CE			
BODY MATERIAL	316 Epoxy			
IMPELLER MATERIAL	Neoprene, Nitrile, Viton, Optional EPDM			
SHAFT MATERIAL	316 Epoxy Sleeve			
SHAFT SEAL	mechanical carbon or tungsten carbide on ceramic			
PORT SIZE	1" (25.4mm) NPT(F)			
MOTOR	1 ½ HP, TEFC AC induction type			
	H145 TC frame, C face			
MAXIMUM PRESSURE	6 ft (1.8m) power cord, 3 prong grounded plug			
	thermal overload protected			
DRY PRIME	30 psi (2.1 bar) or 69 ft (21m) of head-standard			
	60 psi (4.2 bar) or 138 ft (42m) of head-high pressure			
WET PRIME	Neoprene	Nitrile	Viton	EPDM
	8-10 ft (2.4-3.0m)	8-10 ft (2.4-3.0m)	4-6 ft (1.2-1.8m)	4-6ft (1.2-1.8m)
LIQUID TEMP.	45-180°F (8-82°C) Nitrile	50-180°F (10-82°C) Neoprene	60-180°F (15-82°C) Viton	45-185°F (7-85°C) EPDM
	45-185°F (7-85°C) EPDM			
SIZE: PUMP AND MOTOR	8 7/16" x 8 7/8" x 18 ¼" (213 x 224 x 460mm)			
PUMPHEAD ONLY	6 5/8" x 6 5/8" x 7 ½" (167 x 167 x 189mm)			
PEDESTAL MOUNT	4 ¾" x 4 ¾" x 9 ¼" (120 x 120 x 233mm)			
SHIP WT. PUMP AND MOTOR	36 lbs (16.3 kg)			
PUMPHEAD ONLY	7.5 lbs (3.4 kg)			
PEDESTAL MOUNT	8.5 lbs (3.9 kg)			

04 Flexible Impeller Pumps

STAINLESS STEEL PUMPS



30530 Industrial Stainless Steel Pedestal & Close-Coupled Flex Pump

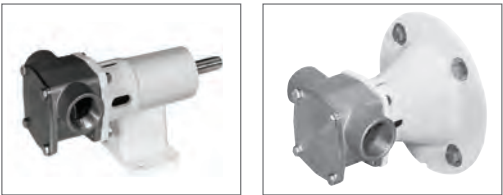
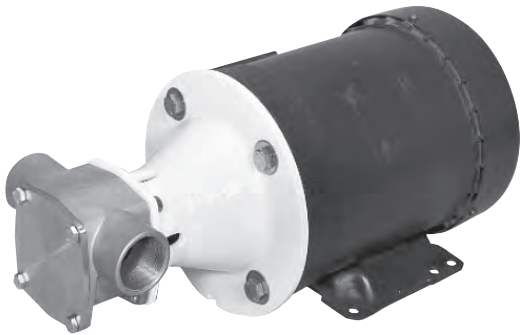


Use where single or variable speed operation and 316 Stainless Steel material is desirable. Self-priming, 50 gpm flow, debris tolerant. Nitrile impeller is ideal for oil based products. Use Neoprene for water and general purpose pumping. Use Viton for hydrocarbons and most solvents. Optional standard EPDM impeller kit 14346-0002 for hygienic applications and some keytone solvents. Use Tungsten Carbide seal when pumping highly corrosive or abrasive fluids. Do not pump gasoline or other flammable liquids. Motor is not explosion proof. Do not run dry.

For pumphead only models (30530-2xxx) select NEMA 184TC Frame C-Face motor rated at 5 hp at 1750 RPM with appropriate service factor. Motor must handle high axial loads. Front ball bearing locked against axial movement is recommended. Motor must deliver 14.5 ft-lbs and 43 ft-lbs torque minimum in forward and reverse directions respectively. For standard impellers only. Use only capacitor start motors.

For pedestal mount models (30530-0xxx) operating at 1750 RPM, select 3 hp or 6 hp motor for standard or high pressure impellers respectively, with an appropriate service factor. For high pressure impellers, the motor must supply 26 ft-lbs or 40 ft-lbs of torque minimum for forward and reverse operation respectively.

Rated flow is based on Neoprene impeller pumping water. Reduce rated flow 10% for Nitrile, Viton, and EPDM standard impellers. Reduce rated flow 15% for Nitrile, Viton and EPDM high pressure impellers.



SPECIFICATIONS

OPEN FLOW	50 gpm (189 lpm)			
VOLTAGE	230/460V AC 60Hz three phase, non CE			
BODY MATERIAL	316 stainless steel			
IMPELLER MATERIAL	Neoprene, Nitrile, Viton, Optional EPDM			
SHAFT MATERIAL	316 stainless steel			
SHAFT SEAL	Mechanical carbon or tungsten carbide, on ceramic			
PORT SIZE	1 ½" (38mm) NPT(F)			
MOTOR	5 hp, TEFC AC induction type			
	184 TC frame, C-fac			
	6 ft (1.8m) power cord, 3 prong grounded plug thermal overload protected			
DRY PRIME	Neoprene	Nitrile	Viton	EPDM
	8-10 ft	8-10 ft	4-6 ft	4-6ft
	(2.4-3.0m)	(2.4-3.0m)	(1.2-1.8m)	(1.2-1.8m)
WET PRIME	18-22 ft	18-22 ft	18-22 ft	8-22 ft
	(5.5-6.7m)	(5.5-6.7m)	(5.5-6.7m)	(5.5-6.7m)
MAXIMUM PRESSURE	30 psi (2.1 bar) or 69 ft (21 m) of head- standard			
	60 psi (4.2 bar) or 138 ft (42 m) of head- high pressure			
LIQUID TEMP.	50-180°F (10-82°C) Nitrile			
	45-180°F (8-82°C) Neoprene,			
	60-180°F (15-82°C) Viton,			
	45-185°F (7-85°C) EPDM			
SIZE: PUMP AND MOTOR	9" x 10 3/8" x 23 ¼" (227 x 262 x 586mm)			
PUMPHEAD ONLY	9" x 9" x 8 5/16" (227 x 227 x 210mm)			
PEDESTAL MOUNT	5 ¾" x 6 7/8" x 11 9/16" (145 x 174 x 292mm)			
SHIP WT. PUMP AND MOTOR	93.5 lbs (42.5 kg)			
PUMPHEAD ONLY	30.0 lbs (13.6 kg)			
PEDESTAL MOUNT	21.0 lbs (9.5 kg)			



30540 Industrial Stainless Steel Pedestal Pump



For pedestal mount models operating at 1750 RPM, select 5 hp or 7 hp motor for standard or high pressure impellers respectively, with an appropriate service factor. For standard pressure impellers, the motor must supply 21 ft-lbs or 38 ft-lbs of torque minimum for forward and reverse operation respectively. For high pressure impellers, the motor must supply 28 ft-lbs or 49 ft-lbs of torque minimum for forward and reverse operation respectively. Optional standard EPDM impeller kit 8963-0002 and high pressure EPDM impeller kit 8600-0002.

Rated flow is based on standard Neoprene impeller pumping water. Reduce rated flow 10% for Nitrile, Viton, and EPDM standard and high pressure impellers.



SPECIFICATIONS

OPEN FLOW	105 gpm (397 lpm)			
BODY MATERIAL	316 Stainless Steel			
IMPELLER MATERIAL	Neoprene, Nitrile, Viton, EPDM			
SHAFT MATERIAL	316 Stainless Steel			
SHAFT SEAL	Mechanical Carbon-on-Ceramic, Nitrile or Viton, Mechanical Carbon-on-Tungsten, Nitrile or Viton			
PORT SIZE	2" (50.8mm) NPT(M)			
MAXIMUM PRESSURE	20 psi (1.4 bar) or 46 ft (14m) lift-standard pressure impeller 60 psi (4.1 bar) or 138 ft (42m) lift-high pressure impeller			
DRY PRIME	Neoprene	Nitrile	Viton	EPDM
	8-10 ft	8-10 ft	4-6 ft	4-6 ft
WET PRIME	(2.4-3.0m)	(2.4-3.0m)	(1.2-1.8m)	(1.2-1.8m)
	18-22 ft	18-22 ft	18-22 ft	18-22 ft
LIQUID TEMP.	(5.5-6.7m)	(5.5-6.7m)	(5.5-6.7m)	(5.5-6.7m)
	50-180°F (10-82°C) Nitrile 45-180°F (8-82°C) Neoprene 60-180°F (15-82°C) Viton 45-185°F (7-85°C) EPDM			
SIZE	8 3/4" x 7 1/2" x 14 1/8"			
	223 x 191 x 359mm) PEDESTAL			
SHIP WT.	8.5 lbs (3.9 kg) PEDESTAL MOUNT			

4720 Stainless Steel Utility Flex Pump



Use where stainless steel, self-priming, 11 gpm flow, debris tolerance and portable 115V AC or 230V AC 60 Hz operation is desired. Nitrile impeller is ideal for oil based products. Use Neoprene for water and general purpose pumping. Motor is not explosion proof. Do not run dry.



SPECIFICATIONS

OPEN FLOW	11 gpm (41 lpm)			
VOLTAGE	115 / 230V AC 60Hz single phase, non CE			
BODY MATERIAL	Stainless steel			
IMPELLER MATERIAL	Neoprene, Nitrile			
SHAFT MATERIAL	316 stainless steel			
SHAFT SEAL	Neoprene lip type			
PORT SIZE	1/2" (12.7mm) NPT(F)			
MOTOR	1/3HP TEFC AC Induction Type			
	6 ft (1.8m) power cord, 3 prong grounded plug thermal overload protected			
MAXIMUM PRESSURE	21 psi (1.5 bar) or 50 ft (15.2m) of Head			
PRIME DRY, WET	8-10 ft (2.4-3.0m)			
	18-22 ft (5.5-6.7m)			
LIQUID TEMP.	50-180°F (10-82°C) Nitrile			
	45-180°F (8-82°C) Neoprene			
SIZE	8 1/4" x 7 3/4" x 13 1/8" (208 x 195 x 331mm)			
SHIP WT.	35 lbs (15.9 kg)			

MODELS

MODEL #S	CE	VOLTAGE	IMPELLER	STYLE
4720-0001	No	115/230 VAC	Neoprene	MPU Pedestal
4720-0003	No	115/230 VAC	Nitrile	MPU Pedestal

04 Flexible Impeller Pumps

SANITARY INTRODUCTION



Flexible impeller Hygienic Positive Displacement Pump

Jabsco Hygienic Flexible Impeller Pumps handle low and high-viscosity liquids, gels and pastes and can pass suspended soft and hard solids with minimal damage. The output flow is smooth, steady and totally pulsation-free and their gentle pumping action will not break down shear-sensitive or fragile liquids. Designed to be cleaned in place or easily strip-cleaned, Xylem Jabsco flexible impeller pumps frequently offer a more suitable and cost-effective alternative to many other pump types.



PEDESTAL PUMPS

OPTIONS

PEDESTAL PUMPS

- Foot-mounted to couple to gearbox or belt-drive
- Hygienic rubber impeller
- Long-life mechanical shaft seal
- All 316 grade Stainless Steel parts with high surface finish
- Used in Food, Dairy, Beverage, Healthcare & Cosmetics sectors

MOTOR MOUNT PUMPS

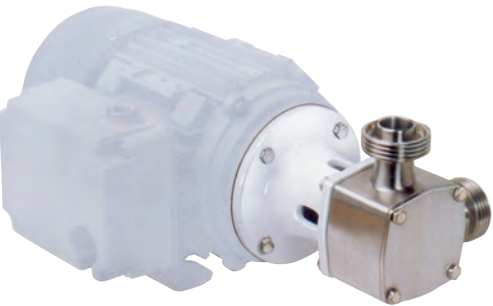
- Used in Food, Dairy, Beverage, Healthcare & Cosmetics sectors
- Close-coupled to motor (unibloc); compact and economical
- Suitable for mounting onto standard IEC or NEMA motors
- Hygienic rubber impeller
- Long-life mechanical shaft seal
- All 316 grade Stainless Steel parts with high surface finish

MILK TANKER PUMPS

- Specialised pumps for Milk Tanker loading at dairy farms
- Bulkhead mounted for hydraulic drive
- Quick-release end-cover for winter drain-down and inspection
- By-pass option for effective CIP without the need to run the pump
- Hygienic rubber impeller

DESIGN FEATURES

- Dry self-priming
- All 316 Stainless Steel parts with high surface finish
- Hygienic rubber impeller leaves no taste or odor
- Elastomers Certified to US 3A Standard 18-03
- Pump certified to US 3A Standard 02-10
- Long-life mechanical shaft seal
- Easy strip-to-clean
- USDA Approved
- Variety of port types and impeller material options
- Chemical-resistant 316 Stainless Steel parts
- Rugged heavy-duty construction
- Replaceable wearplates
- Passes even hard metal particles without stalling
- Long-life mechanical shaft seal
- Variety of shaft seal options
- 3A Variants - Must be specified with HYG Neoprene or EPDM.
- Port Options - Tri-Clamp, IDF, 3A, DIN 11851



MOTOR MOUNT PUMPS

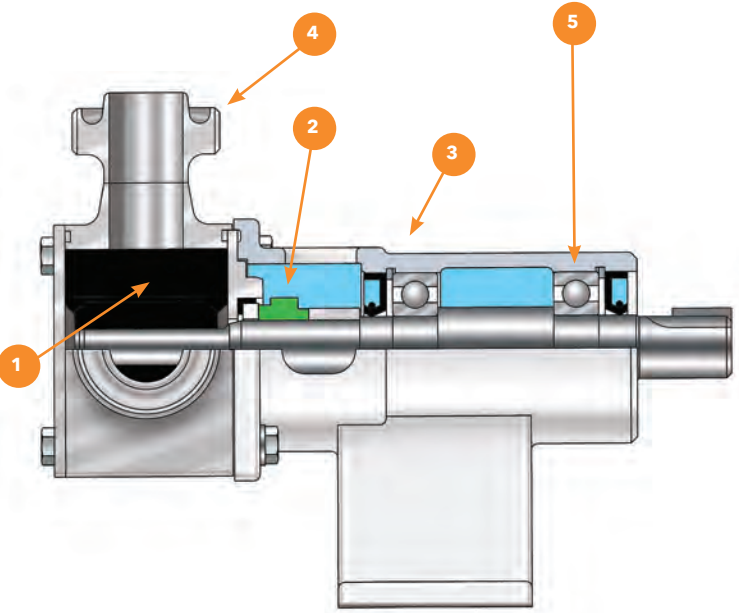


MILK TANKER PUMPS



FLEXIBLE IMPELLER

PUMP MODEL (US)	282x0 (30550)		283x0 (30560)		284x0 (30570)		285x0 (30580)		286x0 (N/A)	
SIZE	40		80		200		370		500	
MOUNTING	Pedestal	Head Kit	Pedestal	Head Kit	Pedestal	Head Kit	Pedestal	Head Kit	Pedestal	Head Kit
PORT SIZE (MM)	25	25	25	25	38	38	50	50	63	63
PORT SIZE (INCH)	1	1	1	1	1½	1½	2	2	2½	2½
MAX FLOW (PER MIN)* (LITRE)	58	58	128	128	225	225	365	365	500	500
MAX FLOW (PER MIN)* (US GAL)	15.3	15.3	33.8	33.8	59.5	59.5	96	96	132	132
MAX PRESSURE* (BAR)	3	3	4.5	4.5	4.5	4.5	3	3	4	4
MAX PRESSURE* (PSI)	43	43	65	6.5	65	65	43	43	58	58
MAX SPEED (RPM)	2500	2500	2500	2500	1800	1800	1500	1500	1500	1500
SIZE LXBXH (MM)	169 x 115 x 147	115 x 115 x 115	214 x 130 x 160	136 x 130 x 130	260 x 162 x 180	167 x 162 x 162	331 x 186 x 218	193 x 186 x 186	475 x 192 x 224	230 x 192.5 x 192
SIZE LXBXH (INC PORTS) (INCH)	6.5 x 4.5 x 5.75	4.5 x 4.5 x 4.5	8.5 x 5 x 6.25	5.25 x 5 x 5	10.25 x 6.25 x 7	6.5 x 6.25 x 6.25	13 x 7.25 x 8.5	7.5 x 7.25 x 8.5	18.75 x 7.5 x 8.75	9 x 7.5 x 7.5
BARESHAFT WEIGHT (KG)	2.9	2.5	4.4	3.5	9.1	6.6	14.7	10	22	15
BARESHAFT WEIGHT (LBS)	6.4	5.5	9.7	7.7	20	14.5	32	22	48.5	33
TEMP NEOPRENE °C (°F)	65 (149)	65 (149)	65 (149)	65 (149)	65 (149)	65 (149)	65 (149)	65 (149)	65 (149)	65 (149)
TEMP EPDM °C (°F)	120 (248)	120 (248)	120 (248)	120 (248)	120 (248)	120 (248)	120 (248)	120 (248)	120 (248)	120 (248)
VISCOSITY (CP)	1 to 50,000									



CONSTRUCTION DETAILS

1. Food grade rubber impeller available in Neoprene, EPDM and Nitrile options which fully conform to today's stringent hygienic standards.
2. Wide variety of long-life interchangeable seal types to suit many applications makes service & maintenance easy.
3. Choice of head kit or pedestal bearing housing satisfies the individual's requirement for unitization. On larger models, bulkhead mounted pumps are available if the option of fitting to hydraulic drive is required.
4. Range of port options for maximum flexibility.
5. Long life, high specification bearings give over 1 million hours life on a typical duty.

04 Flexible Impeller Pumps

STAINLESS STEEL SANITARY



28200 Series Stainless Steel Pedestal Pump & 28220 Head Kit Pump



FEATURES

- Self-primers from dry up to 7.8 ft (2.4m)
- Flows up to 10.5 GPM (40 LPM)
- Pressure up to 43.5 psi (3.0 bar)
- Handles soft solids - max. .31 in (8 mm) dia
- Certified to US 3A Standard 02-09
- Clean-In-Place (CIP) or easy strip clean
- Minimal shear to thixotropic fluids
- Easy to service and maintain

SPECIFICATIONS

SEAL	Carbon/Ceramic mechanical face seal, Tungsten Carbide/ Ceramic hard faced seal, flushed options for crystallizing fluids	
SEAL ELASTOMER	Food grade Nitrile	
PUMP HEAD	Stainless steel 316, machined interior and electropolished exterior finish	
END COVER	Stainless steel 316 grade	
SHAFT	Stainless steel 316 grade	
BEARINGS	Twin single row, ball type	
PORTS	1" (25.4 mm) Tri-Clamp	1" (25.4 mm)3A Bevel Seat
	.98 in (25mm) IDF/ISS	.98 in (25mm) DIN 11851
	1" (25.4 mm RJT to BS1864	.98 in (25mm) SMS 1145
WEIGHT	6.38 lb 2.9 kg	
PRESSURE OPTIONS	Standard - Max 2.5 bar High - Max 4.0 bar	
IMPELLER ELASTOMER OPTION	3A Food Grade Neoprene or EPDM	

28300 Series Stainless Steel Pedestal Pump & 28320 Head Kit Pump



FEATURES

- Self primes from dry up to 16.4 ft (5.0 m)
- Flows up to 21.2 GPM (80 LPM)
- Pressure up to 58 psi (4.0 bar)
- Handles soft solids - max. .47 in (12mm) dia
- Certified to US 3A Standard 02-10
- Clean-In-Place (CIP) or easy strip clean
- Handles viscosities up to 50,000 centiPoise
- Minimal shear to thixotropic fluids
- Fits IEC standard motor B3/B14, frame 80
- Easy to service and maintain

SPECIFICATIONS

SEAL	Carbon / Ceramic mechanical face seal , Tungsten Carbide / Ceramic hard faced seal , Flushed options for crystallising fluids	
SEAL ELASTOMER	Food grade Nitrile	
PUMP HEAD	Stainless steel 316, machined interior and electropolished exterior finish	
END COVER	Stainless steel 316 grade	
SHAFT	Stainless steel 316 grade (Model 28300)	
SHAFT	Stainless steel 316 grade shaft extension (Model 28320)	
BEARINGS	Greased ball bearings (Model 28300)	
BEARINGS	Uses motor bearings (Model 28320)	
BEARING HOUSING	Epoxy coated cast iron (Model 28300)	
MOTOR ADAPTOR	Epoxy coated cast iron (Model 28300)	
PORTS	1" (25.4 mm) Tri-Clamp	1" (25.4 mm)3A Bevel Seat
	.98 in (25mm) IDF/ISS	.98 in (25mm) DIN 11851
	1" (25.4 mm RJT to BS1864	.98 in (25mm) SMS 1145
WEIGHT	4.4kg (Model 28320), 3.5kg(Model 28300)	
PRESSURE OPTIONS	Standard - Max 36.3 psi (2.5 bar) High - Max 58 psi (4.0 bar)	
IMPELLER ELASTOMER OPTION	3A Neoprene E.P.D.M.	



28400 Series Stainless Steel Pedestal Pump & 28420 Head Kit Pump



FEATURES

- Self primes from dry up to 16.4 ft (5.0 m)
- Flows up to 52.8 GPM (200 LPM)
- Pressure up to 58 psi (4.0 bar)
- Handles soft solids - max. .63 in (16 mm) diameter
- Certified to US 3A Standard 02-10
- Clean-In-Place (CIP) or easy strip clean
- Handles viscosities up to 50,000 centiPoise
- Minimal shear to thixotropic fluids
- Fits IEC standard motor B3/B14, frame 90 (model 28420)
- Easy to service and maintain

SPECIFICATIONS

SEAL	Carbon / Ceramic mechanical face seal Tungsten Carbide / Ceramic hard faced seal Flushed options for crystallising fluids
SEAL ELASTOMER	Food grade Nitrile
PUMP HEAD	Stainless steel 316, machined interior and electropolished exterior finish
END COVER	Stainless steel 316 grade
SHAFT	Stainless steel 316 grade (Model 28400)
SHAFT	Stainless steel 316 grade shaft extension (Model 28420)
BEARINGS	Greased ball bearings (Model 28400)
BEARINGS	Uses motor bearings (Model 28420)
BEARING HOUSING	Epoxy coated cast iron (Model 28400)
MOTOR ADAPTOR	Epoxy coated cast iron (Model 28420)
PORTS	1¼" (38.1 mm)Tri-Clamp
	1¼" (38mm) IDF/ISS
	1¼" (38.1 mm) RJT to BS1864
	1¼" (38.1 mm) 3A Bevel Seat
	1.57 in (40mm) DIN 11851
	1¼" 38mm SMS 1145
WEIGHT	9.1kg(Model 28400)
WEIGHT	6.6kg(Model 28420)
PRESSURE OPTIONS	Standard - Max 36.3 psi (2.5 bar) High - Max 58 psi (4.0 bar)
IMPELLER ELASTOMER OPTION	3A Neoprene E.P.D.M.

04 Flexible Impeller Pumps

STAINLESS STEEL SANITARY



28500 Series Stainless Steel Pedestal Pump & 28520 Head Kit Pump



FEATURES

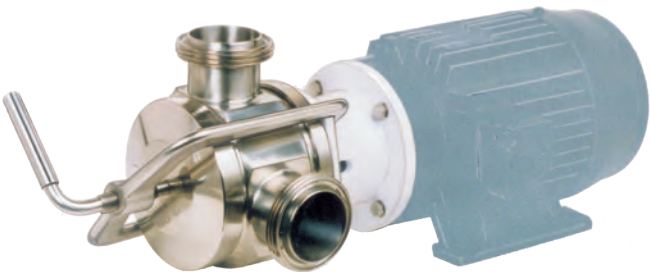
- Self primes from dry up to 4.5 metres
- Flows up to 365 liters per minute
- Pressure up to 43.5 psi (3.0 bar)
- Handles soft solids - max. .71 in (18 mm) dia
- Certified to US 3A Standard 02-10
- Clean-In-Place (CIP) or easy strip clean
- Handles viscosities up to 50,000 centiPoise
- Minimal shear to thixotropic fluids
- Fits IEC standard motor B3/B14, frame 80 (model 28520)
- Easy to service and maintain

SPECIFICATIONS

SEAL	Carbon / Ceramic mechanical face seal Tungsten Carbide / Ceramic hard faced seal Flushed options for crystallising fluids
SEAL ELASTOMER	Food grade Nitrile
PUMP HEAD	Stainless steel 316, machined interior and electropolished exterior finish
END COVER	Stainless steel 316 grade
SHAFT	Stainless steel 316 grade (Model 28500)
SHAFT	Stainless steel 316 grade shaft extension (Model 28520)
BEARINGS	Greased ball bearings (Model 28500)
BEARINGS	Uses motor bearings (Model 28520)
BEARING HOUSING	Epoxy coated cast iron (Model 28500)
MOTOR ADAPTOR	Epoxy coated cast iron (Model 28520)
PORTS	2"(50.8 mm) Tri-Clamp 2" (51 mm) IDF/ISS 2" (50.8 mm) RJT to BS1864 2" (50.8 mm) 3A Bevel Seat 1.97 in (50 mm) DIN 11851 2" 51 mm SMS 1145
WEIGHT	14.7kg (Model 28500)
WEIGHT	10.0 kg (Model 28520)
PRESSURE OPTIONS	Standard - Max 36.3 psi (2.5 bar) High - Max 43.5 psi (3.0 bar)
IMPELLER ELASTOMER OPTION	3A Neoprene E.P.D.M.



28600 Series Stainless Steel Pedestal Pump & 28620 Head Kit Pump



FEATURES

- Self primes from dry up to 16.4 ft (5.0 m)
- Flows up to 137.4 GPM (520 LPM)
- Pressure up to 58 psi (4.0 bar)
- Handles soft solids - max. .71 in (18 mm) diameter
- Certified to US 3A Standard 02-10
- Clean-In-Place (CIP) or easy strip clean
- Handles viscosities up to 50,000 centiPoise
- Minimal shear to thixotropic fluids
- Fits IEC standard motor B3/B14, frame 90 (model 28420)
- Easy to service and maintain

SPECIFICATIONS

SEAL	Carbon / Ceramic mechanical face seal Tungsten Carbide / Ceramic hard faced seal Flushed options for crystallising fluids
SEAL ELASTOMER	Food grade Nitrile
PUMP HEAD	Stainless steel 316, machined interior and electropolished exterior finish
END COVER	Stainless steel 316 grade
SHAFT	Stainless steel 316 grade (Model 28600)
SHAFT	Stainless steel 316 grade shaft extension (Model 28620)
BEARINGS	Greased ball bearings (Model 28600)
BEARINGS	Uses motor bearings (Model 28620)
BEARING HOUSING	Epoxy coated cast iron (Model 28600)
MOTOR ADAPTOR	Epoxy coated cast iron (Model 28620)
PORTS	2¼"(63.5 mm) Tri-Clamp 2¼" (63.5mm) IDF/ISS 2¼" (63.5mm) RJT to BS1864 2¼" (63.5mm) 3A Bevel Seat 2.6 in (65mm) DIN 11851 2¼" 63.5mm SMS 1145
WEIGHT	48.5 lb (22.0kg)
WEIGHT	15.0kg (Model 28620)
PRESSURE OPTIONS	Standard - Max 29 psi (2.0 bar) High - (72.1) Max 5.0 bar
IMPELLER ELASTOMER OPTION	3A Neoprene

04 Flexible Impeller Pumps

STAINLESS STEEL SANITARY



30550 Series Sanitary Flexible Impeller Pumps



SPECIFICATIONS

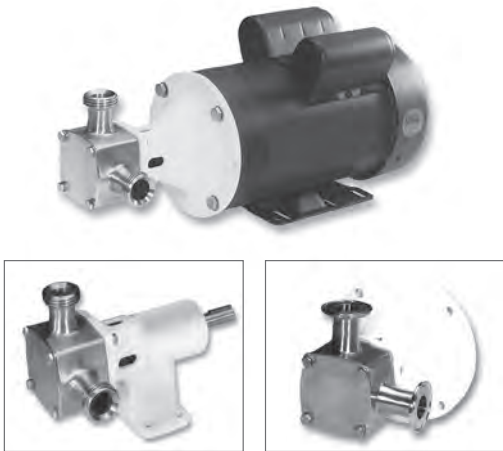
PUMP TYPE	Pedestal Pump, Pump Head, Close Coupled
BODY	316 Stainless Steel
IMPELLER	Neoprene or EPDM
SHAFT SEAL	Mechanical; Carbon-on-Ceramic or Tungsten Carbide; Nitrile
PORTS	1" (25.4) ACME Threads with Bevel Seat or Clamp Type
SHAFT	316 Stainless Steel Pedestal
SHAFT	316 Stainless Steel Motor: Pump Head, Close Coupled
MOTOR	115 Vac, Single Phase, 60Hz, ¼ HP, 1750 RPM, TEFC, C-Face, 56C Frame
WEIGHT	5.5 lb (2.5 kg) Approx. Pedestal Pump
WEIGHT	7.5 lb (3.4 kg) Approx. Pump Head
WEIGHT	36.0 lb (16.3 kg) Approx. Close Coupled

FEATURES

- Flow rate: Nominal 10.5 GPM (40 LPM) at 1750 rpm
- Self-priming from dry up to 2.4m (7.8ft)
- Pressure up to 58 psi (4 bar)
- Handles soft solids - max. .31 (8mm) diameter

- Certified to US 3A Standard 02-10
- Clean-In-Place (CIP) or easy strip clean
- Handles viscosities up to 50,000 centiPoise
- Minimal shear to thixotropic fluids
- Easy to service and maintain

30560 Series Sanitary Flexible Impeller Pumps



SPECIFICATIONS

PUMP TYPE	Pedestal Pump, Pump Head, Close Coupled
BODY	316 Stainless Steel
IMPELLER	Neoprene or EPDM
SHAFT SEAL	Mechanical; Carbon-on-Ceramic or Tungsten Carbide; Nitrile
PORTS	1" (25.4mm) ACME Threads with Bevel Seat or Clamp Type
SHAFT	316 Stainless Steel
SHAFT	316 Stainless Steel Motor
MOTOR	115/230 Vac, Single Phase, 60Hz, 1-¼ HP, H145 TC Frame, C-Face, 1740 RPM, TEFC, Overload Protected, Capacitor Start, non CE.
WEIGHT	8.5 lb (3.9 kg) Approx. Pedestal
WEIGHT	12.0 lb (5.5 kg) Approx. Pump Head
WEIGHT	56.0 lb (25.4 kg) Approx. Close Coupled

FEATURES

- Flow rate: Nominal 21.5 LPM 81 LPM) at 1750 rpm
- Self-priming from dry up to 2.4m (7.8ft)
- Pressure up to 58 psi (4 bar)
- Handles soft solids - max. .47 in 12 mm diameter

- Certified to US 3A Standard 02-10
- Clean-In-Place (CIP) or easy strip clean
- Handles viscosities up to 50,000 centiPoise
- Minimal shear to thixotropic fluids
- Easy to service and maintain



30570 Series Sanitary Flexible Impeller Pumps



SPECIFICATIONS

PUMP TYPE	Pedestal Pump, Pump Head, Close Coupled
BODY	316 Stainless Steel
IMPELLER	Neoprene or EPDM
SHAFT SEAL	Mechanical; Carbon-on-Ceramic or Tungsten Carbide; Nitrile
PORTS	1¼" (38.1 mm) ACME Threads with Bevel Seat or Clamp Type
SHAFT	316 Stainless Steel
SHAFT	316 Stainless Steel Motor
MOTOR	230/460 Vac, 3 Phase, 60Hz, 5 HP 1750 RPM, TEFC, C-Face, 184 TC Frame, non CE
WEIGHT	21.0 lb (9.5 kg) Approx. Pedestal
WEIGHT	30.0 lb (18.6 kg) Approx Pump Head
WEIGHT	93.5 lb (42.5 kg) Approx. Close Coupled

FEATURES

- Flow rate: Nominal 51 GPM (193 LPM) at 1750 rpm
- Self-priming from dry up to 2.4m (7.8ft)
- Pressure up to 58 psi (4 bar)
- Handles soft solids - max. .63 in (16mm) diameter

- Certified to US 3A Standard 02-09
- Clean-In-Place (CIP) or easy strip clean
- Handles viscosities up to 50,000 centiPoise
- Minimal shear to thixotropic fluids
- Easy to service and maintain

30580 Series Sanitary Flexible Impeller Pumps



SPECIFICATIONS

PUMP TYPE	Pedestal Pump
BODY	316 Stainless Steel
IMPELLER	Neoprene or EPDM
SHAFT SEAL	Mechanical; Carbon-on-Ceramic or Tungsten Carbide; Nitrile
PORTS	2" (50.8 mm)ACME Threads with Bevel Seat or Clamp Type
SHAFT	316 Stainless Steel
WEIGHT	31.0 lb (14.1 kg) Approx.

FEATURES

- Flow rate: Nominal 105 GPM (397 LPM) at 1750 rpm
- Self-priming from dry up to 2.4m (7.8ft)
- Pressure up to 58 psi (4 bar)
- Handles soft solids - max. 18mm diameter

- Certified to US 3A Standard 02-10
- Clean-In-Place (CIP) or easy strip clean
- Handles viscosities up to 50,000 centiPoise
- Minimal shear to thixotropic fluids
- Easy to service and maintain

04 Flexible Impeller Pumps

STAINLESS STEEL SANITARY



22060 Bulkhead/Milk Tanker Pump



FOR INTERNATIONAL MARKETS



FEATURES

- Flow rate: Nominal 128 GPM (484 LPM) at 1450 rpm
- Self-priming from dry up to 2.4 m (7.8ft)
- Pressure up to 36.3 psi (2.5 bar)
- Handles soft solids - max. .7 in (18mm) diameter
- Certified to US 3A Standard 02-10
- Clean-In-Place (CIP) or easy strip clean
- Minimal shear to thixotropic fluids
- Easy to service and maintain

MODELS

MODEL #S	CE	VOLTAGE	IMPELLER	STYLE	
22060-10-5205	Yes	N/A	Sanitary Neoprene	Flange	Stainless

SPECIFICATIONS

BODY	316 Stainless steel
BEARING HOUSING	316 Stainless steel
IMPELLER	3A Food Grade Neoprene
SEAL	Carbon/Ceramic mechanical
SEAL ELASTOMER	Food grade Nitrile
BEARINGS	Twin single row, ball type
SHAFT	316 Stainless steel
PORT TYPE	2¼" (63.5 mm)Tri-Clamp
	2¼" (63.5 mm) IDF/ISS
	2¼" (63.5 mm) RJT to BS1864
	2¼" (63.5 mm) 3A Bevel Seat
	2.6 in (65mm) DIN 11851
WEIGHT	2¼" (63.5 mm) SMS 1145
	50 lb 23 kg

23930 Bulkhead/Milk Tanker Pump



FOR INTERNATIONAL MARKETS



FEATURES

- Flow rate: Nominal 185 GPM (700 LPM) at 1750 rpm
- Self-priming from dry up to 2.4m (7.8ft)
- Pressure up to 21.7 psi (1.5 bar)
- Handles soft solids - max. .7 in (18mm) diameter
- Certified to US 3A Standard 02-10
- Clean-In-Place (CIP) or easy strip clean
- Minimal shear to thixotropic fluids
- Easy to service and maintain

MODELS

MODEL #S	CE	VOLTAGE	IMPELLER	STYLE	
23930-5115	Yes	N/A	3A Neoprene	Flange	Stainless

SPECIFICATIONS

BODY	316 Stainless steel
BEARING HOUSING	316 Stainless steel
IMPELLER	3A Food Grade Neoprene
SEAL	Carbon/Ceramic mechanical
SEAL ELASTOMER	Food Grade Nitrile
BEARINGS	Twin single row, ball/roller type
SHAFT	316 Stainless steel
PORT TYPE	2¼" (63.5 mm)Tri-Clamp
	2¼" (63.5 mm) IDF/ISS
	2¼" (63.5 mm) RJT to BS1864
	2¼" (63.5 mm) 3A Bevel Seat
	2.6 in (65mm) DIN 11851
WEIGHT	2¼" (63.5 mm) SMS 1145
	53 lb (24 kg)



15170 Bulkhead/Milk Tanker Pump



FOR INTERNATIONAL MARKETS



MODELS

MODEL #S	CE	VOLTAGE	IMPELLER	STYLE
15170-7365	Yes	N/A	Sanitary Neoprene	2" (50.8 mm) ACME Threads
15170-0015	Yes	N/A	Sanitary Neoprene	2" (50.8 mm) Clamp

SPECIFICATIONS

BODY	316 Stainless steel
BEARING HOUSING	316 Stainless steel
IMPELLER	3A Food Grade Neoprene
SEAL	Carbon/Ceramic mechanical type
SEAL ELASTOMER	Food grade Nitrile
BEARINGS	Twin single row, ball type
SHAFT	316 Stainless steel
PORT TYPE	2" (50.8 mm) ACME Threads or 2" (50.8 mm) Tri-Clamp
WEIGHT	34 lb 15.4 kg

FEATURES

- Flow rate: Up to 90 GPM (397 LPM)
- Self-priming from dry up to 2.4 m (7.8 ft)
- Pressure up to 21.7 psi (1.5 bar)
- Handles soft solids - max. .71 in (18 mm) diameter
- Certified to US 3A Standard 02-10
- Clean-In-Place (CIP) or easy strip clean
- Minimal shear to thixotropic fluids
- Easy to service and maintain