

# 04 Flexible Impeller Pumps

EPOXY / PHENOLIC PLASTIC PUMPS



## 12310 Series Phenolic Plastic Flex Pump



Use where corrosion resistant plastic material, self-priming, flow, and debris tolerance is desired. Neoprene for water and general purpose pumping. Nitrile impeller is ideal for oil based products. Use Viton for hydrocarbons and solvents. Motor is not explosion proof. Do not run dry.



MODELS

MODEL #S	CE	VOLTAGE	IMPELLER	STYLE
12310-0001	No	115 VAC	Neoprene	MPU
12310-0003	No	115 VAC	Nitrile	MPU

SPECIFICATIONS

OPEN FLOW	4 gpm (15.1 lpm)
VOLTAGE	115V AC 60Hz single phase non CE
BODY MATERIAL	Phenolic
IMPELLER MATERIAL	Neoprene, Nitrile
SHAFT MATERIAL	Stainless Steel
SHAFT SEAL	Buna lip type
PORT SIZE	3/8" (9.5 mm) NPT (F), 3/4" (19.0 mm) male garden hose thread
MOTOR	PMDC rectified, Intermitten Duty
MAXIMUM PRESSURE	17 psi (1.2 bar), 39 ft (11.9 m) of water
PRIME DRY, WET	5 - 7 ft (1.5-2.1m), 10 - 14 ft (3.0-4.3m)
LIQUID TEMP.	45-180°F (7-82°C) Neoprene 50-180°F (10-82°C) Nitrile
SIZE	3 7/16" x 5" x 7" (87 x 126 x 177mm)
SHIP WT.	5.8 lbs (2.6 kg)

## 12560 Series Phenolic Plastic Flex Pump



FOR US MARKETS

Use where corrosion resistant plastic material, self-priming, flow, and debris tolerance is desired. Neoprene for water and general purpose pumping. Nitrile impeller is ideal for oil based products. Use Viton for hydrocarbons and solvents. Motor is not explosion proof. Do not run dry.



MODELS

MODEL #S	CE	VOLTAGE	IMPELLER	STYLE
12560-0001	Yes	12 VDC	Neoprene	MPU

SPECIFICATIONS

OPEN FLOW	4.6 gpm (17.4 LPM)
VOLTAGE	12V DC CE approved
BODY MATERIAL	Phenolic
IMPELLER MATERIAL	Neoprene
SHAFT MATERIAL	Stainless Steel
SHAFT SEAL	Buna lip type
PORT SIZE	5/8" (15.9 mm) Hose Barb
MOTOR	PMDC, TENV, thermal overload protected, 7 amp nominal, 10 amp fuse
APPROVALS	Ignition protection
MAXIMUM PRESSURE	8.7 psi (20.1 bar), 20 ft. of water
PRIME DRY, WET	1 - 2ft (.3-.6m), 2 - 4 ft (.6-1.2m)
LIQUID TEMP.	45-160°F (8-70°C) Neoprene 50-180°F (10-82°C) Nitrile
SIZE	3 1/4" x 5" x 6 1/2" (82 x 126 x 164mm)
SHIP WT.	4.5 lbs (2 kg)



## 3010 Series Epoxy Pedestal pump



MODELS

MODEL #S	CE	VOLTAGE	IMPELLER	STYLE
3010-1011	Yes	N/A	Neoprene	Pedestal

SPECIFICATIONS

FLOW RATE	5 gpm (19 lpm)
BODY	Phenolic
IMPELLER	Neoprene, Nitrile, Viton
SHAFT	Stainless Steel
SEAL	Lipseal
BEARINGS	PTFE /graphite
BRACKET	Plated steel
PORTS	16mm OD for hose connections
WEIGHT	0.25kg

## 12290 Series Phenolic Plastic Flex Pump



Use where corrosion resistant phenolic or glass filled epoxy material, self-priming, and debris tolerance is desired. Nitrile impeller is ideal for oil based products. Use Neoprene for water and general purpose pumping. Use Viton for hydrocarbons and solvents. Long lasting AC induction motor has no brushes to wear out. Motor is not explosion proof. Do not run dry.



MODELS

MODEL #S	CE	VOLTAGE	IMPELLER	STYLE
12290-0001	No	115 VAC	Neoprene	MPU
12290-0003	No	115 VAC	Nitrile	MPU
12290-0004	No	115 VAC	Viton	MPU
12290-0271	No	115 VAC	Neoprene	MPU
12290-0273	No	115 VAC	Nitrile	MPU
12290-0274	No	115 VAC	Viton	MPU

SPECIFICATIONS

OPEN FLOW	5.8 gpm (22 lpm)
VOLTAGE	115V AC 60Hz single phase non CE
BODY MATERIAL	Phenolic
IMPELLER MATERIAL	Neoprene, Nitrile, Viton
SHAFT MATERIAL	Stainless Steel
SHAFT SEAL	Buna or Viton lip type
PORT SIZE	5/8" (15.9 mm) Hose Barb
MOTOR	1/6 HP, ODP 1/4 HP, TENV 6 ft (1.83 m) power cord with 3 prong grounded plug Thermal Overload Protected 4.2 amps full load OD 3.3 amps full load TENV
LIQUID TEMP.	45-180°F (7-82°C) Neoprene 50-180°F (10-82°C) Nitrile 60-180°F (16-82°C), Viton
MAXIMUM PRESSURE	17 psi (1.2 bar), 39 ft of water
PRIME DRY, WET	8-10 ft (2.4-3.1m), 10-15 ft (3.1-4.6m), Neoprene, 3-5 ft (.9-1.5m), 8-10 ft (2.4-3.1m), Nitrile, Viton
SIZE	8 3/8" x 9 23/32" x 14 5/16", (211 x 245 x 361mm)
SHIP WT.	12 lb (5.5 kg)

# 04 Flexible Impeller Pumps

EPOXY / PHENOLIC PLASTIC PUMPS



## 17430 Series Epoxy Utility Pump



Use where corrosion resistant phenolic or glass filled epoxy material, self-priming, and debris tolerance is desired. Nitrile impeller is ideal for oil based products. Use Neoprene for water and general purpose pumping. Use Viton for hydrocarbons and solvents. Long lasting AC induction motor has no brushes to wear out. Motor is not explosion proof. Do not run dry.



### MODELS

MODEL #S	CE	VOLTAGE	IMPELLER	STYLE
17430-0003	No	115 VAC	Nitrile	MPU

### SPECIFICATIONS

OPEN FLOW	11 gpm, (42 lpm)
VOLTAGE	115V AC 60Hz single phase (Non CE)
BODY MATERIAL	Epoxy
IMPELLER MATERIAL	Nitrile, Viton
SHAFT MATERIAL	Epoxy sleeve
SHAFT SEAL	Mechanical carbon-on-ceramic
PORT SIZE	½" (12.7mm) NPT(F)
MOTOR	½ hp, TEFC, AC induction type 6 ft (1.83m) power cord, 3 prong grounded plug thermal overload protected, 8.8 amps full load
MAXIMUM PRESSURE	21 psi (1.5 bar) or 50 ft (15.24m) of head
PRIME DRY, WET	12 - 15 ft (3.7-4.6m), 18 - 22 ft (5.5-6.7m)
LIQUID TEMP.	50-180°F (10-82°C) Nitrile 45-180°F (8-82°C) Neoprene 60-180°F (15-82°C) Viton
SIZE	8 3/8" x 9 23/32" x 14 5/16" (211 x 245 x 361mm)
SHIP WT.	33.5 lbs (15.2 kg)

## 28250 Series Epoxy Head Kit & 28260 Series Pedestal Pump



### FEATURES

- Self primes from dry up to 5.0 metres
- Flows up to 70 liters per minute
- Pressure up to 3.0 bar
- Handles hard or soft solids - max. 5mm diameter
- High chemical resistance Epoxy plastic
- Non pulsating flow, proportional to speed
- Handles viscosities up to 10,000 centiPoise
- No metal parts in liquid contact
- Fits IEC standard motor B3/B14, frame 80 (Model 28260)



### MODELS

See page 92 for Model Numbers

### SPECIFICATIONS

SEAL	Carbon / Ceramic mechanical face seal
SEAL ELASTOMERS	Nitrile
PUMP HEAD	Epoxy Thermoset plastic
END COVER	Epoxy Thermoset plastic
SHAFT	Epoxy covered stainless steel shaft extension
BEARINGS	Twin single row, ball type (Model 28250)
BEARINGS	Uses motor bearings (Model 28260)
BEARING HOUSING	Epoxy coated cast iron (Model 28250)
MOTOR ADAPTOR	Epoxy coated cast iron (Model 28260)
PORTS	¾" BSP external thread to BS21 (DIN2999)
WEIGHT	1.7kg (Model 28250)
WEIGHT	1.7kg (Model 28260)
PRESSURE OPTIONS	Standard - Max 2.5 bar High - Max 3.0 bar
IMPELLER ELASTOMER OPTION	Neoprene E.P.D.M. Nitrile Viton® Neoprene E.P.D.M. Nitrile Viton®

† Pressures over 1.7 bar may reduce motor shaft life



## 28350 Series Pedestal Pump & 28360 Series Epoxy Head Kit Pump



### MODELS

MODEL #S	CE	VOLTAGE	IMPELLER	STYLE
28350-2101	Yes	N/A	Neoprene	Pedestal
28350-2103	Yes	N/A	Nitrile	Pedestal
28350-2104	Yes	N/A	Viton	Pedestal
28350-2123	Yes	N/A	Nitrile	Pedestal
28350-2124	Yes	N/A	Viton	Pedestal
28350-2125	Yes	N/A	Sanitary Neoprene	Pedestal
28360-2101	Yes	N/A	Nitrile	Head Kit
28360-2103	Yes	N/A	Viton	Head Kit
28360-2104	Yes	N/A	Viton	Head Kit
28360-2204	Yes	N/A	Nitrile	Head Kit

### SPECIFICATIONS

SEAL	Carbon / Ceramic mechanical face seal
SEAL ELASTOMERS	Nitrile
PUMP HEAD	Epoxy
END COVER	Epoxy
SHAFT	Epoxy covered stainless steel shaft (Model 28350)
SHAFT	Epoxy coated stainless steel shaft extension (Model 28360)
BEARINGS	Twin single row, ball type (Model 28350)
BEARINGS	Uses motor bearings (Model 28360)
BEARING HOUSING	Epoxy coated cast iron (Model 28360)
MOTOR ADAPTOR	Epoxy coated cast iron
PORTS	1"(25.4 mm) BSP external thread to BS21 (DIN2999)
WEIGHT	2.1 (Model 28350)
WEIGHT	2.1kg (Model 28360)
PRESSURE OPTION	Standard - Max 2.5 bar
IMPELLER ELASTOMER OPTION	Neoprene E.P.D.M. Nitrile Viton®

### FEATURES

- Self primes from dry up to 5.0 metres
- Flows up to 42.3 GPM (160 LPM)
- Pressure up to 36.25 psi (2.5 bar)
- Handles hard or soft solids - max. 1/5" (5mm) diameter
- Tolerates abrasive wear - replaceable wearplate
- Non pulsating flow, proportional to speed
- Handles viscosities up to 4,000 centiPoise
- Minimal shear to thixotropic fluids
- Fits IEC standard motor B3/B14, frame 80 (Model 28360)

# 04 Flexible Impeller Pumps

EPOXY / PHENOLIC PLASTIC PUMPS



## 30510 Series Epoxy Plastic P edestal & Close-Coupled Flex Pump

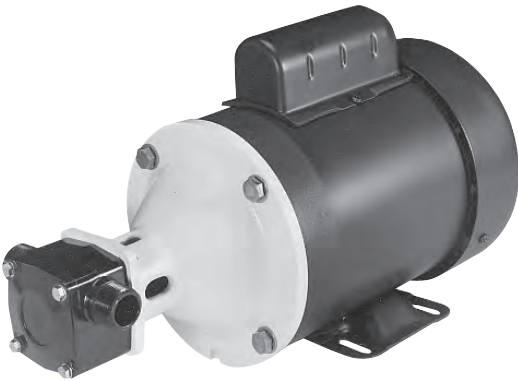


Use where single or variable speed operation and Plastic Epoxy material is desirable. Self-priming, 8 gpm flow, debris tolerant. Nitrile impeller is ideal for oil based products. Use Neoprene for water and general purpose pumping. Use Viton for hydrocarbons and most solvents. Optional EPDM standard and high pressure impeller kits 7614-0002 and 8980-0002 for hygienic applications and some keytone solvents. Use Tungsten Carbide seal when pumping highly corrosive or abrasive fluids. Motor is not explosion proof. Do not run dry.

For pumphead only models (30510-3xxx) select NEMA 56C Frame C-Face motor rated at ¾ hp at 1750 RPM with appropriate service factor. Motor must handle high axial loads. Ball bearings locked against axial movement are recommended. Motor must deliver 1.5 ft-lbs and 4.3 ft-lbs torque minimum in forward and reverse directions respectively. Use only capacitor start motors.

For pedestal mount models (30510-1xxx) operating at 1750 RPM, select ¾ hp or 1 ½ hp motor for standard or high pressure impellers respectively, with an appropriate service factor. For high pressure impellers, the motor must supply 3 ft-lbs or 6.9 ft-lbs of torque minimum for forward and reverse operation respectively.

Rated flow is based on Neoprene impeller pumping water. Reduce rated flow 10% for Nitrile, Viton, and EPDM standard impellers. Reduce rated flow 15% for Nitrile, Viton and EPDM high pressure impellers.



### SPECIFICATIONS

OPEN FLOW	8 gpm (30 lpm)			
VOLTAGE	115V AC 60Hz single phase, non CE			
BODY MATERIAL	Epoxy plastic			
IMPELLER MATERIAL	Neoprene, Nitrile, Viton, EPDM			
SHAFT MATERIAL	Epoxy plastic sleeve			
SHAFT SEAL	Mechanical carbon or tungsten carbide on ceramic			
PORT SIZE	¾" (19mm) NPT(M)			
MOTOR	- ¾ HP, TEFC AC induction type - Intermittent Duty, 56c Frame, C Face, - 3 prong grounded plug - Thermal Overload Protected			
MAXIMUM PRESSURE	Consult Performance Chart			
	Neoprene	Nitrile	Viton	EPDM
DRY PRIME	7-10 ft (2.1-3.0m)	7-10 ft (2.1-3.0m)	7-10 ft (2.1-3.0m)	4-6ft (1.2-1.8m)
WET PRIME	17-22 ft (5.7-6.7m)	17-22 ft (5.7-6.7m)	17-22 ft (5.7-6.7m)	10-12 ft (3.1-3.7m)
LIQUID TEMP.	45-180°F (8-82°C) Neoprene 50-180°F (10-82°C) Nitrile 60-180°F (15-82°C) Viton 45-185°F (7-85°C) EPDM			
SIZE	Consult data sheet 43000-0516			
SHIP WT.	30510-5xxx - 35 lb (15.9 kg) 30510-3xxx - 6.5 lb (3.0 kg) 30510-1xxx - 4.5lb (2.0 kg)			



## 30520 Series Epoxy Plastic pedestal & Close-Coupled Flex Pump



Use where single or variable speed operation and Plastic Epoxy material is desirable. Self-priming, 22 gpm flow, debris tolerant. Nitrile impeller is ideal for oil based products. Use Neoprene for water and general purpose pumping. Use Viton for hydrocarbons and most solvents. Optional EPDM standard and high pressure impeller kits 8981-0002 and 8840-0002 for hygienic applications and some keytone solvents. Use Tungsten Carbide seal when pumping highly corrosive or abrasive fluids. Motor is not explosion proof. Do not run dry.

For pump head only models (30520-3xxx) select NEMA 145TC Frame C-Face motor rated at 1 ½ hp at 1750 RPM with appropriate service factor. Motor must handle high axial loads. Front ball bearing locked against axial movement is recommended. Motor must deliver 4.8 ft-lbs and 11.2 ft-lbs torque minimum in forward and reverse directions respectively. Use only capacitor start motors.

For pedestal mount models (30520-1xxx) operating at 1750 RPM, select 1 ½ hp or 3 hp motor for standard or high pressure impellers respectively, with an appropriate service factor. For high pressure impellers, the motor must supply 7.9 ft-lbs or 16.3 ft-lbs of torque minimum for forward and reverse operation respectively.

Rated flow is based on Neoprene impeller pumping water. Reduce rated flow 10% for Nitrile, Viton, and EPDM standard impellers. Reduce rated flow 15% for Nitrile, Viton and EPDM high pressure impellers.



### SPECIFICATIONS

OPEN FLOW	22 gpm (83 lpm)			
VOLTAGE	115/230V AC 60Hz single phase, non CE			
BODY MATERIAL	Epoxy plastic			
IMPELLER MATERIAL	Neoprene, Nitrile, Viton, optional EPDM			
SHAFT MATERIAL	Epoxy Plastic Sleeve			
SHAFT SEAL	Mechanical carbon or tungsten carbide on ceramic			
PORT SIZE	1" (25.4mm) NPT(M)			
MOTOR	1½ hp, capacity start, TEFC, C-face, H145 TC frame 6 ft (1.8m) power cord, 3 prong grounded plug thermal overload protected			
MAXIMUM PRESSURE	30 psi (2.1 bar) or 70 ft (21.3m) of head standard pressure, 60 psi (4.2 bar) or 138 ft (42.1) of head, high pressure			
	Neoprene	Nitrile	Viton	EPDM
DRY PRIME	8-10 ft (2.4-3.0m)	8-10 ft (2.4-3.0m)	4-6 ft (1.2-1.8m)	4-6ft (1.2-1.8m)
WET PRIME	18-22 ft (5.5-6.7m)	18-22 ft (5.5-6.7m)	18-22 ft (5.5-6.7m)	18-22 ft (5.5-6.7m)
LIQUID TEMP.	45-180°F (8-82°C) Neoprene 50-180°F (10-82°C) Nitrile 60-180°F (15-82°C) Viton 45-185°F (7-85°C) EPDM			
SIZE: PUMP AND MOTOR	9 1/8" x 8 7/8" x 16 ¼" (230 x 224 x 410mm)			
PUMP HEAD ONLY	6 5/8" x 6 5/8" x 6 13/16" (167 x 167 x 171mm)			
PEDESTAL MOUNT	4¾" x 4 7/8" x 9 5/8" (120 x 123 x 243 mm)			
SHIP WT. PUMP AND MOTOR	54.5 lbs (24.7 kg)			
PUMP HEAD ONLY	10.5 lbs (4.8 kg)			
PEDESTAL MOUNT	7.0 lbs (3.2 kg)			