

04 Flexible Impeller Pumps

BRONZE PUMPS



17830 Reversible DC Water Puppy



FOR INTERNATIONAL MARKETS

Especially suited for viscous fluids and engine oil transfer where self-priming and 3 gpm flow is required. Pump oil from crankcase to storage container, and from storage container to waste container automatically using the manual flow reverse switch. No need to remove or re-attach hoses to reverse oil flow direction. Oil temperature should be 100-140°F. Use 12V DC from vehicle battery. Do not run dry.



MODELS

MODEL #S	CE	VOLTAGE	IMPELLER	STYLE
17830-0012	Yes	12 VDC	Nitrile	MPU
17830-0024	Yes	24 VDC	Nitrile	MPU

SPECIFICATIONS

OPEN FLOW	3 gpm (11.4 lpm)
VOLTAGE	12V DC CE Approved
BODY MATERIAL	Bronze
IMPELLER MATERIAL	Nitrile
SHAFT MATERIAL	Stainless steel
SHAFT SEAL	Buna lip type
PORT SIZE	3/8" (9.5mm) NPT(F)
MOTOR	PMDC, TENV with manual reverse switch 10 amps nominal 15 amps fuse
APPROVALS	CE
MAXIMUM PRESSURE	8.7 psi or 20 ft (6.1m) of lift
PRIME DRY, WET	3-4 ft (.9-1.2 m), 15-20 ft (4.6-6.1 m)
LIQUID TEMP.	45-180°F (7-82°C) Nitrile
SIZE	4 7/16" x 3 1/4" x 7 7/8" (113 x 83 x 200 mm)
SHIP WT	9 lbs (4.1 kg)

18660 DC Water Puppy



For general transfer pumping where self-priming, 6 gpm flow and debris tolerance are required. Use optional oil-resistant nitrile impeller 6303-0003 if oil or diesel fuel are present. Do not run dry.



MODELS

MODEL #S	CE	VOLTAGE	IMPELLER	STYLE
18660-0121	No	12 VDC	Neoprene	MPU
18660-0123	No	12 VDC	Nitrile	MPU

SPECIFICATIONS

OPEN FLOW	6.3 gpm (24 lpm)
VOLTAGE	12V DC, non CE
BODY MATERIAL	Bronze
IMPELLER MATERIAL	Neoprene or Nitrile
SHAFT MATERIAL	Stainless steel
SHAFT SEAL	Lip type
SHAFT SEAL MATERIAL	Nitrile
PORT SIZE	1/2" (12.7mm) NPT(F) 3/4" (19mm) male garden hose adapter
MOTOR	PMDC, TENV 8.0 amps nominal 15 amps fuse
MAXIMUM PRESSURE	8.7 psi or 20 ft (6.1m) of lift
PRIME DRY, WET	2-4 ft (.6-1.2m), 15-20 ft (4.6-6.1m)
LIQUID TEMP.	45-180°F (7-82°C) Neoprene
SIZE	3 3/8" x 4 3/4" x 6 1/2" (86 x 121 x 165mm)
SHIP WT.	4.5 lbs (2. kg)



18670 Commercial Duty DC Water Puppy



Commercial Duty Water Puppy has 25% more flow than the standard model and a heavy duty PMDC motor. For general transfer pumping where self-priming, 8 gpm flow and debris tolerance are required. Oil-resistant nitrile impeller is standard. Do not run dry.



MODELS

MODEL #S	CE	VOLTAGE	IMPELLER	STYLE
18670-0123	No	12 VDC	Nitrile	MPU
18670-0943	No	24 VDC	Nitrile	MPU

SPECIFICATIONS

OPEN FLOW	8 gpm (30.4 lpm)
VOLTAGE	12 or 24V DC, non CE
BODY MATERIAL	Bronze
IMPELLER MATERIAL	Nitrile
SHAFT MATERIAL	316 stainless steel
SHAFT SEAL	Lip type
PORT SIZE	1/2" (12.7mm) NPT(F) and 1" (25.4mm) hose barb 3/4" (19mm) male garden hose adapter
MOTOR	PMDC, TENV, Amp Draw 11.5 amp at 12V 5 amp at 24V Fuse Size 20 amp for 12V 10 amp for 24V
MAXIMUM PRESSURE	8.7 psi or 20 ft (6.1m) of lift
PRIME DRY, WET	4-6 ft (1.2-1.8m), 15-20 ft (4.6-6.1m)
LIQUID TEMP.	50-180°F (10-82°C) Nitrile
MAXIMUM PRESSURE	8.7 psi or 20 ft (6.1m) of Head
SIZE	3" x 4 3/4" x 6 7/8" (76 x 120 x 175mm)
SHIP WT	6.0 lbs (2.7 kg)

23610 Maxi Puppy 3000



Continuous rated, heavy duty pumps for general purpose use.



FEATURES

- Simple design means fewer wearing parts.
- 44 lpm (9.5 UK gpm) output @ 3m (10ft) head.
- Self priming to 2.4m (8 ft).

MODELS

MODEL #S	CE	VOLTAGE	IMPELLER	STYLE
23610-3003	Yes	12 VDC	Nitrile	MPU
23610-3103	Yes	24 VDC	Nitrile	MPU

23620 Mini Puppy



Continuous rated, medium duty pumps for general purpose use.



FEATURES

- Simple design means fewer wearing parts.
- 6 lpm (1.3 UK gpm) output @ 2m (6.6ft) head.
- Self priming to 1.5m (5 ft).

MODELS

MODEL #S	CE	VOLTAGE	IMPELLER	STYLE
23620-4003	Yes	12 VDC	Nitrile	MPU
23620-4103	Yes	24 VDC	Nitrile	MPU

04 Flexible Impeller Pumps

BRONZE PUMPS



23670 Junior Puppy



Continuous rated, medium duty pumps for general purpose use.



FEATURES

- Small debris present no problem to these bronze bodied, flexible impeller pumps.
- Simple design means fewer wearing parts.
- 15.5 lpm (3.4 UK gpm) output @ 5m (16ft) head.
- Self priming to 2.5m (8 ft).

MODELS

MODEL #S	CE	VOLTAGE	IMPELLER	STYLE
23670-4003	Yes	12 VDC	Nitrile	MPU
23670-4103	Yes	24 VDC	Nitrile	MPU

23920 Extended Run Dry Utility Puppy 2000/3000



Continuous rated, medium duty pumps for general purpose use.



MODELS

MODEL #S	CE	VOLTAGE	IMPELLER	STYLE
23920-2403/2000	Yes	12 VDC	Nitrile	BSP
23920-2503/2000	Yes	24 VDC	Nitrile	BSP
23920-9403/2000	Yes	12 VDC	Nitrile	NPT
23920-9503/2000	Yes	24 VDC	Nitrile	NPT
23920-2213/3000	Yes	12 VDC	Nitrile	BSP
23920-2313/3000	Yes	24 VDC	Nitrile	BSP
23920-9213/3000	Yes	12 VDC	Nitrile	NPT
23920-9313/3000	Yes	24 VDC	Nitrile	NPT

SPECIFICATIONS

OPEN FLOW	8 gpm (30 lpm) -2000 11 gpm (42 lpm) -3000
VOLTAGE	12V DC, CE approved
BODY MATERIAL	Bronze
IMPELLER MATERIAL	Nitrile
SHAFT MATERIAL	Stainless steel
SHAFT SEAL	Mechanical, Carbon Ceramic/Nitrile
PORT SIZE	¾" (19.1mm) NPT(F)
MOTOR	PMDC, TENV , 23920-9403 15 amp fuse 23920-9213 25 amp fuse
LIQUID TEMP.	45-180°F (7-82°C)
MAXIMUM PRESSURE	8 psi, 19 ft (5.8m) of lift
DRY PRIME	23920-9403 3-4 ft (.9 - 1.2m), 23920-9213 6-8 ft (1.8 - 2.4m)
SIZE	23920-9403 7 ½" x 4 ¾" x 3 ½", (190 x 121 x 89mm), 23920-9213 8 ½" x 4 ¾" x 3 ½", (216 x 121 x 89mm)
SHIP WT.	23920-9403 8.2 lbs (4 kg) 23920-9213 9.7 lbs (3.4 kg)



18610 Bronze Utility Pump



For general transfer pumping where self-priming, 6 gpm flow, debris tolerance and portable 115VAC operation is desired. Choice of impeller materials. Nitrile for oil based products. Viton for hydrocarbons and solvents. Neoprene for water and general purpose pumping. Long lasting AC induction motor has no brushes to wear out. Do not pump gasoline or other flammable liquids. Do not run dry. Motor is not explosion proof. For continuous operation at 75°F do not exceed 15 psi outlet pressure or 38 feet of lift.



MODELS

See page 92 for Model Numbers

SPECIFICATIONS

OPEN FLOW	6.0 gpm (22.8 lpm)
VOLTAGE	115V AC 60Hz single phase, non CE
BODY MATERIAL	Bronze
IMPELLER MATERIAL	Neoprene
SHAFT MATERIAL	316 Stainless Steel
SHAFT SEAL	Neoprene Lip type
PORT SIZE	½" (12.7mm) NPT (F) ¾" (19mm) Male Garden Hose Adapters
MOTOR	¼ hp, non-vented, 8 ft (2.4m) power cord 3 prong grounded plug Thermal overload protected
MAXIMUM PRESSURE	13 psi, 30 ft (9.1m) of Head ODF 17 psi, 39 ft (11.9m) of Head TENV
DRY PRIME	4 - 6 ft (1.2 - 1.8m)
WET PRIME	16 - 20 ft (4.9 - 6.1m)
LIQUID TEMP.	45-180°F (7-82°C) Neoprene 50-180°F (10-82°C) Nitrile 60-180°F (15-82°C) Viton
SIZE	9 x 7 x 7 ¼(229mm x 178mm x 184mm)
SHIP WT.	12 lbs (5.5 kg)

11810 Bronze AC Utility Pump



For general transfer pumping where self-priming, 10 gpm flow, debris tolerance and portable 115V AC operation is desired. Nitrile for oil based products. Neoprene for water and general purpose pumping. Do not run dry. Motor is not explosion proof.



SPECIFICATIONS

OPEN FLOW	10 gpm (38 lpm)
VOLTAGE	115V AC 60Hz single phase, non CE
BODY MATERIAL	bronze
IMPELLER MATERIAL	Nitrile
SHAFT MATERIAL	316 stainless steel
SHAFT SEAL	lip type
SHAFT SEAL MATERIAL	Nitrile
PORT SIZE	½" (12.7mm) NPT(F) and ¾" (19.1mm) male garden hose thread
MOTOR	1/3 hp, TEFC or ODP AC induction type 8 ft (2.4m) power cord with 3 prong grounded plug Thermal overload protected 7 amps nominal, 10 amp fuse
MAXIMUM PRESSURE	17 psi, 39 ft of Head
PRIME DRY, WET	8 - 10 ft (2.4 - 3m), 16 - 20 ft (4.9 - 6.1m)
LIQUID TEMP.	45-180°F (7-82°C) Neoprene 50-180°F (10-82°C) Nitrile
SIZE	7 ¾" x 7 ¼" x 10 ½" (197 x 184 x 267mm)
SHIP WT	20 lbs (9.1kg) ODP, 25 lbs (11.3kg) TEFC

04 Flexible Impeller Pumps

BRONZE PUMPS



6050 Bronze AC Utility Pump



For general transfer pumping using 115V AC power where self-priming, 23 gpm flow and debris tolerance are required. Oil-resistant nitrile impeller is standard. Do not run dry.



MODELS

MODEL #S	CE	VOLTAGE	IMPELLER	STYLE
6050-0003	No	115 VAC	Nitrile	MPU/ODP
6050-0013	No	115 VAC	Nitrile	MPU/TEFC

SPECIFICATIONS

OPEN FLOW	23 gpm (87 lpm)
VOLTAGE	115/230VAC 60Hz single phase, non CE
BODY MATERIAL	Bronze
IMPELLER MATERIAL	Nitrile
SHAFT MATERIAL	316 stainless steel
SHAFT SEAL	Lip type
SHAFT SEAL MATERIAL	Nitrile
PORT SIZE	1" (25.4mm) NPT (F)
MOTOR	¾ hp TEFC or ODP AC induction type 8 ft. (2.4m) power cord with 3 prong grounded plug Thermal overload protected
MAXIMUM PRESSURE	26 psi or 60 ft (18.2m) lift
PRIME DRY, WET	8-10 ft (2.4-3 m), 20-22 ft (6.1-6.7m)
LIQUID TEMP.	50-180°F (10-82°C)
SHIP WT.	35.5 lbs (16.1 kg)
SIZE	8 19/32" x 7 ¾" x 13 1/32" (218 x 197 x 331mm)

50005 Series



MODELS

MODEL #S	CE	VOLTAGE	IMPELLER	STYLE
50005-8411	Yes	230/1/50	Neoprene	MPU
50005-8413	Yes	230/1/50	Nitrile	MPU

FEATURES

- Self primes from dry up to 1.5 metres (4.9 feet)
- Flows up to .3 gal (4.5 litres) per minute
- Pressure up to 29psi (2 bar)
- Handles hard or soft solids
- Tolerates abrasive wear
- Non pulsating flow
- Handles viscosities up to 500 centiPoise
- Uses standard IEC motor

SPECIFICATIONS

SEAL	Nitrile lip seal
PUMP HEAD	Bronze
END COVER	Brass
BEARINGS	Uses motor bearings
SHAFTS	Stainless steel shaft extension
PORTS	3/8" BSP internal thread, 1" (25.4mm) bore hose connection
MOTOR ADAPTOR	Polypropylene
WEIGHT	13.7lbs (6.2kg)

50010 Series



MODELS

MODEL #S	CE	VOLTAGE	IMPELLER	STYLE
50010-2411	Yes	230/1/50	Neoprene	MPU
50010-2413	Yes	230/1/50	Nitrile	MPU

FEATURES

- Self prime from dry up to 4.9 feet (1.5 metres)
- Flows up to 1.6 gal (6 litres) per minute
- Pressure up to 36.2 psi (2.5 bar)
- Will handle hard or soft solids
- Will tolerate abrasive wear
- Non pulsating flow
- Will handle viscosities up to 500 centiPoise
- Uses standard IEC motor

SPECIFICATIONS

SEAL	Nitrile lip seal
PUMP HEAD	Bronze
END COVER	Brass
BEARINGS	Uses motor bearings
SHAFTS	Stainless steel shaft extension
PORTS	3/8" (9.5mm) BSP internal thread and 19mm (¾") bore hose connections
MOTOR ADAPTOR	Polypropylene
WEIGHT	13.9 lbs (6.3kg)

50020 Series



MODELS

MODEL #S	CE	VOLTAGE	IMPELLER	STYLE
50020-2411	Yes	230/1/50	Neoprene	MPU
50020-2413	Yes	230/1/50	Nitrile	MPU

FEATURES

- Self prime from dry up to 4.9 feet (1.5 metres)
- Flows up to 4.8 gal (18 litres) per minute
- Pressure up to 24.7psi (1.7 bar)
- Will handle hard or soft solids
- Will tolerate abrasive wear
- Non pulsating flow
- Will handle viscosities up to 500 centiPoise
- Uses standard IEC motor

SPECIFICATIONS

SEAL	Nitrile lip seal
PUMP HEAD	Bronze
END COVER	Brass
BEARINGS	Uses motor bearings
SHAFTS	Stainless steel shaft extension
PORTS	½" (12.7mm) BSP internal thread and 25mm (1") bore hose connections
MOTOR ADAPTOR	Polypropylene
WEIGHT	14.1 lbs (6.4kg)



04 Flexible Impeller Pumps

BRONZE PUMPS



53010 Series



MODELS

MODEL #S	CE	VOLTAGE	IMPELLER	STYLE
53010-2111	Yes	230/1/50	Neoprene	MPU
53010-2113	Yes	230/1/50	Nitrile	MPU
53010-2115	Yes	230/1/50	Sanitary Neoprene	MPU

FEATURES

- Self prime from dry up to 4.9 feet (1.5 metres)
- Flows up to 3 gal (12 litre) at 50.8 psi (3-5bar)
- Pressure up to 24.7psi (1.7 bar)
- Handles hard or soft solids
- Tolerates abrasive wear
- Non pulsating flow
- Handles viscosities up to 500 cP
- Uses standard IEC motor
- Dry running capability for 30 minutes without damage to pump (post operation)

SPECIFICATIONS

SEAL	Carbon / ceramic mechanical face seal, Butyl elastomers
PUMP HEAD	Bronze with integral fluid reservoir to protect pump against dry running for up to 30 minutes (post operation)
END COVER	Brass
BEARINGS	Uses motor bearings
SHAFT	Stainless steel, shaft extension
PORTS	½" (12.7mm) BSP external thread
MOTOR ADAPTOR	Polypopylene
WEIGHT	15.7lbs (7.1kg)

53020 Series



MODELS

MODEL #S	CE	VOLTAGE	IMPELLER	STYLE
53020-2011	Yes	230/1/50	Neoprene	MPU
53020-2013	Yes	230/1/50	Nitrile	MPU

FEATURES

- Self prime from dry up to 4.9 feet (1.5 metres)
- Flows up to 4.5 gal (18 litres) per minute
- Pressure up to 24.7psi (1.7 bar)
- Handles hard or soft solids
- Tolerates abrasive wear
- Non pulsating flow
- Handles viscosities up to 500 cP
- Uses standard IEC motor
- Dry running capability for 30 minutes without damage to pump (post operation)

SPECIFICATIONS

SEAL	Carbon / ceramic mechanical face seal, Butyl elastomers
PUMP HEAD	Bronze with integral fluid reservoir to protect pump against dry running for up to 30 minutes (post operation)
END COVER	Brass
BEARINGS	Uses motor bearings
SHAFT	Stainless steel, shaft extension
PORTS	¾" (19mm) BSP internal thread
MOTOR ADAPTOR	Polypopylene
WEIGHT	15.7 lbs (7.1kg)



53040 Series



MODELS

MODEL #S	CE	VOLTAGE	IMPELLER	STYLE
53040-2001	Yes	230/1/50	Neoprene	MPU
53040-2003	Yes	230/1/50	Nitrile	MPU
53040-2021	Yes	230/1/50	Neoprene	MPU
53040-2103	Yes	110/1/50	Neoprene	MPU

FEATURES

- Self prime from dry up to 9.8 feet (3 metres)
- Flows up to 9.2 gal (35 litres) per minute
- Pressure up to 36.3 psi (2.5 bar)
- Handles hard or soft solids
- Tolerates abrasive wear
- Non pulsating flow
- Handles viscosities up to 500 cP
- Uses standard IEC motor
- Dry running capability for 30 minutes without damage to pump (post operation)

SPECIFICATIONS

SEAL	Carbon / ceramic mechanical face seal, Butyl elastomers
PUMP HEAD	Bronze with integral fluid reservoir to protect pump against dry running for up to 30 minutes (post operation)
END COVER	Brass
BEARINGS	Uses motor bearings
SHAFT	Stainless steel, shaft extension
PORTS	1" (25.4mm) BSP internal thread
MOTOR ADAPTOR	Polypopylene
WEIGHT	21 lbs (9.5kg)

53080 Series



MODELS

MODEL #S	CE	VOLTAGE	IMPELLER	STYLE
53080-2001	Yes	230/1/50	Neoprene	MPU
53080-2003	Yes	230/1/50	Nitrile	MPU
53080-2063	Yes	220V50	Nitrile	MPU

FEATURES

- Self prime from dry up to 9.8 feet (3 metres)
- Flows up to 21 gal (80 liters) per minute
- Pressure up to 29 psi (2 bar)
- Handles hard or soft solids
- Tolerates abrasive wear
- Non pulsating flow
- Handles viscosities up to 500 cP
- Uses standard IEC motor
- Dry running capability for 30 minutes without damage to pump (post operation)

SPECIFICATIONS

SEAL	Carbon/Ceramic mechanical seal, Nitrile elastomers
PUMP HEAD	Bronze with integral fluid reservoir to protect pump against dry running for up to 30 minutes, post operational
END COVER	Brass
BEARINGS	Uses motor bearings
SHAFT	Stainless steel, shaft extension
PORTS	1½"(38.1mm) BSP internal thread
CABLE	Fitted with 2m long supply cable
WEIGHT	33.7 lbs (15kg)

04 Flexible Impeller Pumps

BRONZE PUMPS



22860 Series



- FEATURES**
- Flows up to 9.2 gal (35 liters) /minute @ 1500 RPM
 - Self primes from dry up to 9.8 ft (3.0 metres)
 - Handles hard or soft solids
 - Non pulsating flow
 - Gentle pump action does not damage shear sensitive products
 - Easy to service and maintain

MODELS

MODEL #S	CE	VOLTAGE	IMPELLER	STYLE	
22860-2001	Yes	N/A	Neoprene	Head Kit	
22860-2003	Yes	N/A	Nitrile	Head Kit	
22860-2021	Yes	N/A	Neoprene	Head Kit	Flange
22860-2061	Yes	N/A	Neoprene	Head Kit	
22860-2702	Yes	N/A	3A EPDM	Head Kit	

SPECIFICATIONS

SEAL	Carbon/Ceramic mechanical seal
PUMP HEAD	Bronze
END COVER	Brass
BEARINGS	Uses motor bearings
SHAFT	Stainless steel shaft extension
MOTOR ADAPTOR	Epoxy-coated aluminium, suitable for B3/B14 D80 frame motor to IEC 71 standard
PORTS	¾" (19mm) BSP internal thread
WEIGHT	4.2 lbs (1.9kg)

22870 Series



- FEATURES**
- Flows up to 21 gal (80 liters) /minute @ 1500 RPM
 - Self prime from dry up to 16.4 ft (5 metres)
 - Handles hard or soft solids
 - Non pulsating flow
 - Gentle pump action does not damage shear-sensitive products
 - Easy to service and maintain

MODELS

MODEL #S	CE	VOLTAGE	IMPELLER	STYLE	
22870-2001	Yes	N/A	Neoprene	Head Kit	
22870-2003	Yes	N/A	Nitrile	Head Kit	
22870-2043	Yes	N/A	Nitrile	Head Kit	
22870-2201	Yes	N/A	Neoprene	Head Kit	No Adapter
22870-2203	Yes	N/A	Nitrile	Head Kit	No Adapter
22870-2543	Yes	N/A	Nitrile	MPU	
22870-2702	Yes	N/A	3A EPDM	Head Kit	

SPECIFICATIONS

SEAL	Carbon/Ceramic mechanical seal
PUMP HEAD	Bronze
END COVER	Brass
BEARINGS	Uses motor bearings
SHAFT	316 Stainless steel shaft extension
MOTOR ADAPTOR	Epoxy-coated aluminium, suitable for B3/B14 D80 frame motor to IEC 71 standard
PORTS	1" (25.4mm) BSP internal thread
WEIGHT	5.7 lbs (2.6kg)



22880 Series



- FEATURES**
- Flows up to 52.8 gal (200 litres) /minute @ 1500 RPM
 - Self primes from dry up to 9.8 ft (3.0 metres)
 - Handles hard or soft solids
 - Non pulsating flow
 - Gentle pump action does not damage shear sensitive products
 - Easy to service and maintain

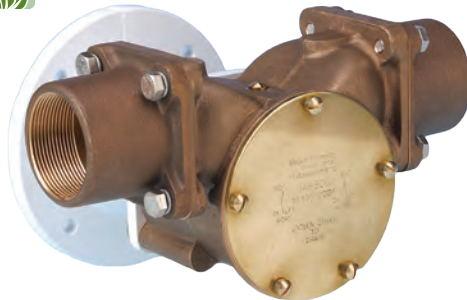
MODELS

MODEL #S	CE	VOLTAGE	IMPELLER	STYLE	
22880-0033	Yes	N/A	Nitrile	Head Kit	
22880-2201	Yes	N/A	Neoprene	Head Kit	Flange
22880-2203	Yes	N/A	Nitrile	Head Kit	Flange
22880-2401	Yes	N/A	Neoprene	Head Kit	Flange

SPECIFICATIONS

SEAL	Carbon/Ceramic mechanical seal
PUMP HEAD	Bronze
END COVER	Brass
BEARINGS	Uses motor bearings
SHAFT	316 Stainless steel shaft extension
MOTOR ADAPTOR	Epoxy-coated aluminium, suitable for B3/B14 D100 frame motor to IEC 71 standard
PORTS	Flanged, adaptors available
WEIGHT	17 lbs (7.7kg)

22890 Series



- FEATURES**
- Flows up to 71.3 gal (270 litres) /minute @ 1500 RPM
 - Self prime from dry up to 14.8 ft (4.5 metres)
 - Handles hard or soft solids
 - Non pulsating flow
 - Gentle pump action does not damage shear-sensitive products
 - Easy to service and maintain

MODELS

MODEL #S	CE	VOLTAGE	IMPELLER	STYLE
22890-2001	Yes	N/A	Neoprene	Head Kit

SPECIFICATIONS

SEAL	Carbon/Ceramic mechanical seal
PUMP HEAD	Bronze
END COVER	Brass
BEARINGS	Uses motor bearings
SHAFT	316 Stainless steel shaft extension
MOTOR ADAPTOR	Epoxy-coated aluminium, suitable for B3/B14 D100 frame motor to IEC 71 standard
PORTS	Flanged, adaptors available
WEIGHT	20.5 lbs (9.3kg)

04 Flexible Impeller Pumps

BRONZE PUMPS



53270 Series



MODELS
See page 97 for Model Numbers

- FEATURES**
- Flows up to 71.3 gal (270 litres)/minute @ 1500 RPM
 - Self primes from dry up to 14.8 ft (4.5 metres)

SPECIFICATIONS	
SEAL	Carbon/Ceramic mechanical seal
PUMP HEAD	Bronze
END COVER	Brass
BEARINGS	Uses motor bearings
SHAFT	316 Stainless steel shaft extension
MOTOR ADAPTOR	Epoxy-coated aluminium, suitable for B3/B14 D100 frame motor to IEC 71 standard
PORTS	2" (50.8mm) BSP internal thread
WEIGHT	20.5 lbs (9.3kg)

- Handles hard or soft solids
- Non pulsating flow
- Gentle pump action does not damage shear sensitive products
- Easy to service and maintain



2620 Bronze Pedestal Pump



SPECIFICATIONS	
OPEN FLOW	4.4 gpm (20 lpm)
BODY MATERIAL	Bronze
IMPELLER MATERIAL	Neoprene, Nitrile
SHAFT MATERIAL	Bronze
SHAFT DIAMETER	½" (12.7mm)
SHAFT SEAL MATERIAL	Neoprene lip type
PORT SIZE	3/8" (9.5mm) NPT (F)
MAXIMUM PRESSURE	13 psi (.9 bar) or 30 ft (9.1 m) of head
PRIME DRY, WET	8-10 ft (2.4-3m), 15-22 ft (4.6-6.7m)
LIQUID TEMP.	45-160°F (8-70°C) Neoprene 50-160°F (10-82°C) Nitrile
SIZE	3 3/16" x 3 1/8" x 3 15/16" (81 x 79 x 100mm)
SHIP WT.	2.7 lbs (1.3 kg)

2760 Bronze Pedestal Pump



SPECIFICATIONS	
OPEN FLOW	4.4 gpm (20 lpm)
BODY MATERIAL	Bronze
IMPELLER MATERIAL	Neoprene, Nitrile
SHAFT MATERIAL	Stainless steel
SHAFT SEAL	Neoprene lip type
SHAFT DIAMETER	3/8" (9.5mm)
PORT SIZE	¼" NPT(F)
MAXIMUM PRESSURE	17 psi (1.2 bar) or 40 ft (12.2m) of head
PRIME DRY, WET	8-10 ft (2.4-3 m) 15-22 ft (4.6-6.7 m)
LIQUID TEMP.	45-180°F (7-82°C) Neoprene 50-180°F (10-82°C) Nitrile
SIZE	2 7/16" x 2 5/8" x 3 9/16" (62 x 67 x 90mm)
SHIP WT.	1.5 lbs (.7 kg)

1673 Bronze Pedestal Flexible Impeller Pump



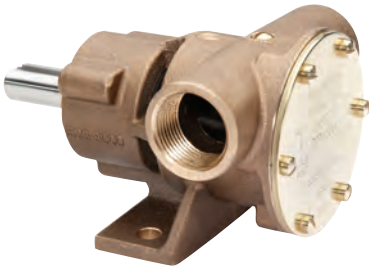
SPECIFICATIONS	
OPEN FLOW	8.9 gpm (40 lpm)
BODY MATERIAL	Bronze
IMPELLER MATERIAL	Neoprene, Nitrile
SHAFT MATERIAL	Stainless Steel
SHAFT SIZE	5/8" (15.9mm)
SHAFT SEAL	Lip or Face Seal
SHAFT SEAL MATERIAL	Nitrile
PORT SIZE	½" (12.7 mm) NPT (F)
PRIME DRY, WET	8-10 ft (2.4-3 m), 15-20 ft (4.6-6.7m)
LIQUID TEMP.	45-160°F (8-70°C) 50-180°F (10-82°C)
MAXIMUM PRESSURE	21 psi (1.5 bar) or 50 ft (15.2m) of head
SIZE	3 13/16" x 4 1/8" x 4 ½" , (96 x 104 x 113mm)
SHIP WT.	4.25 lbs (1.4 kg)

04 Flexible Impeller Pumps

BRONZE PUMPS



777 Bronze Pedestal Flexible Impeller Pump

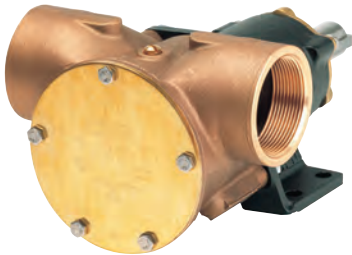


SPECIFICATIONS

OPEN FLOW	17.8 gpm (80 lpm)
BODY MATERIAL	Bronze
IMPELLER MATERIAL	Neoprene, Nitrile
SHAFT MATERIAL	Stainless Steel
SHAFT SEAL	Face or Lip Type
SHAFT SEAL MATERIAL	Nitrile
PORT SIZE	1" (25.4mm) NPT (F)
MAXIMUM PRESSURE	26 psi (1.8 bar) or 60 ft (18.3m) of Head
PRIME DRY, WET	8-10 ft (2.4-3m), 20-22 ft (4.6-6.7m)
LIQUID TEMP.	45-160°F (8-70°C), Neoprene, 50-160°F (10-82°C), Nitrile
SIZE	3 9/16" x 4 3/4" x 6 5/16" (90 x 120 x 159mm)
SHIP WT.	5.8 lbs (2.6 kg)



18370 Bronze Pedestal Pump & 52270 Series



SPECIFICATIONS

	Model 18370 (USA Only)	Model 52220
OPEN FLOW	60gpm (270lpm)	60gpm (270lpm)
BODY	Bronze	Bronze, Iron bearing housing
IMPELLER MATERIAL	Neoprene/Nitrile	Neoprene/Nitrile
SHAFT MATERIAL	Stainless Steel	Stainless Steel
SHAFT SEAL	Carbon/Ceramic Mechanical	Carbon/Ceramic Mechanical
SHAFT DIAMETER	1" (25.4mm)	1" (25.4mm)
BEARING	Twin row, ball type	Twin row, ball type
PORT SIZE	2" (50.8mm) NPT	2" Flanged or 2" BSP (50.8mm)
PRIME DRY, WET	7.8ft (2.4m)	7.8ft (2.4m)
LIQUID TEMP	45F to 180F (7C to 82C)	45F to 180F (7C to 82C)
SIZE	10-7/8" X 8" X 5-1/16" (276 X 170 X 128mm)	11" X 7" X 5" 2 (79 X 178 X 127mm)
SHIP WEIGHT	19 lb (8.6 kg)	19.8 lb (9 kg)

6400 Bronze Pedestal Pump



SPECIFICATIONS

OPEN FLOW	44.4 gpm (200 lpm)
BODY MATERIAL	Bronze
IMPELLER MATERIAL	Neoprene
SHAFT MATERIAL	Bronze
SHAFT SEAL	Carbon ceramic face type
SHAFT DIAMETER	1 1/4" (31.8mm)
PORT SIZE	1 1/4" (31.8mm) NPT (F)
MAXIMUM PRESSURE	26 psi (1.8 bar) or 60 ft (18.3m) of head
PRIME DRY, WET	8-10ft (2.4-30m), 15-22 ft (4.6-6.7m)
LIQUID TEMP.	45-180°F (8-70°C) Neoprene, 50-180°F (10-82°C) Nitrile
SIZE	4 7/8" x 5 7/8" X 8 1/16" (123 x 149 x 204mm)
SHIP WT.	10.5 lbs (4.8 kg)

51510 & 51520 Series



SPECIFICATIONS

	Model 51510	Model 51520
OPEN FLOW	2.2gpm (10lpm)	4.4gpm (20lpm)
BODY	Bronze	Bronze
IMPELLER MATERIAL	Neoprene	Neoprene
SHAFT MATERIAL	Stainless Steel	Stainless Steel
SHAFT SEAL	Carbon/Ceramic Mechanical	Carbon/Ceramic Mechanical
SHAFT DIAMETER	1" (25.4mm)	1" (25.4mm)
BEARING	Sealed Ball Bearings	Sealed Ball Bearings
PORT SIZE	3/8" BSP or 3/8" NPT (9.5mm)	3/8" BSP or 3/8" NPT (9.5mm)
PRIME DRY, WET	4.9ft (1.5m)	4.9ft (1.5m)
LIQUID TEMP	45F to 180F (7C to 82C)	45F to 180F (7C to 82C)
SIZE	3-5/8" X 3 X 2-3/8" (92 X 80 X 60mm)	3-3/4" X 3" X 3-1/2" (95.4 X 80 X 85mm)
SHIP WEIGHT	1.4 lb (0.62 kg)	1.5 lb (0.67 kg)

04 Flexible Impeller Pumps

BRONZE PUMPS



52040 & 52580 Series



SPECIFICATIONS

	Model 52040 (European Only)	Model 52580
OPEN FLOW	8.9gpm (40lpm)	17.8gpm, (80lpm)
BODY	Bronze	Bronze
IMPELLER MATERIAL	Neoprene/Nitrile	Neoprene/Nitrile
SHAFT MATERIAL	Stainless Steel	Stainless Steel
SHAFT SEAL	Lip type	Carbon/Ceramic Mechanical
SHAFT DIAMETER	1" (25.4mm)	1" (25.4mm)
BEARING	Twin row, ball type	Twin row, ball type
PORT SIZE	¾" BSP (19mm)	1" BSP, 1"NPT (25mm)
PRIME DRY, WET	7.8ft (2.4m)	7.8ft (2.4m)
LIQUID TEMP	45F to 180F (7C to 82C)	45F to 180F (7C to 82C)
SIZE	5" X 4" X 3" (128 X 106 X 78mm)	6-½" X 5" X 4" (180 X 120 X 100mm)
SHIP WEIGHT	3.3 lb (1.5 kg)	7.33 lb (3.33 kg)



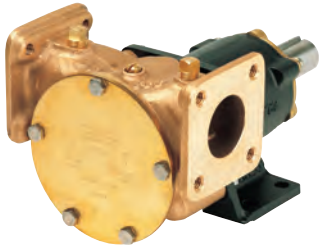
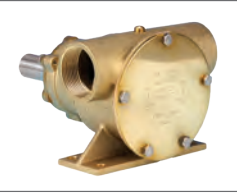
11860 & 11870 Series



SPECIFICATIONS

	Model 11860	Model 11870
OPEN FLOW	23gpm (87lpm)	62gpm (234lpm)
BODY	Bronze	Bronze
IMPELLER MATERIAL	Neoprene/ Nitrile	Neoprene/Nitrile
SHAFT MATERIAL	Stainless Steel	Stainless Steel
SHAFT SEAL	Carbon/Ceramic Mechanical	Carbon/Ceramic Mechanical
PULLEY DIAMETER	7" (178mm)	7" (178mm)
BELT	2 Groove A, 1 Groove B	2 Groove A, 1 Groove B
CLUTCH VOLTAGE	12 / 24 vdc	12 / 24 vdc
BEARING	Twin row, ball type	Twin row, ball type
PORT SIZE	1" (25.4mm) NPT	1-¼" (31.75mm)
PRIME DRY, WET	7.8ft (2.4m)	7.8ft (2.4m)
LIQUID TEMP	45F to 180F (7C to 82C)	45F to 180F (7C to 82C)
SIZE	6-3/16" X 5-3/8" X 4-29/32" (157 X 137 X 125mm)	8-3/16" X 6-1/16" X 7-1/16" (208 X 154 X 179mm)
SHIP WEIGHT	15 lb (6.8 kg)	19.5 lb (8.9 kg)

52200 & 52220 Series



SPECIFICATIONS

	Model 52200	Model 52220
OPEN FLOW	44.5gpm (200lpm)	44.5gpm (200lpm)
BODY	Bronze	Bronze
IMPELLER MATERIAL	Neoprene/Nitrile	Neoprene/Nitrile
SHAFT MATERIAL	Stainless Steel	Stainless Steel
SHAFT SEAL	Carbon/Ceramic Mechanical	Carbon/Ceramic Mechanical
SHAFT DIAMETER	1" (25.4mm)	1" (25.4mm)
BEARING	Twin row, ball type	Twin row, ball type
PORT SIZE	1-½" BSP (38.1 mm)	1-½" Flange (38.1 mm)
PRIME DRY, WET	7.8ft (2.4m)	7.8ft (2.4m)
LIQUID TEMP	45F to 180F (7C to 82C)	45F to 180F (7C to 82C)
SIZE	8" X 6" X 5" (204 X 150 X 120mm)	10-½" X 6" X 6" (276 X 152 X 146mm)
SHIP WEIGHT	11 lb (5 kg)	15.4 lb (7 kg)

50580 Series



SPECIFICATIONS

OPEN FLOW	17.8gpm (80lpm)
BODY	Bronze
IMPELLER MATERIAL	Neoprene/ Nitrile
SHAFT MATERIAL	Stainless Steel
SHAFT SEAL	Carbon/Ceramic Mechanical
PULLEY DIAMETER	7" (178mm)
BELT	2 Groove A, 1 Groove B
CLUTCH VOLTAGE	12 / 24 vdc
BEARING	Twin row, ball type
PORT SIZE	1" (25.4mm) NPT, 1" (25.4mm) BSP
PRIME DRY, WET	7.8ft (2.4m)
LIQUID TEMP	45F to 180F (7C to 82C)
SIZE	6-½" X 5" X 7" (160 X 120 X 117mm)
SHIP WEIGHT	11 lb (5 kg)

04 Flexible Impeller Pumps

BRONZE PUMPS



50200 & 50220 Series



SPECIFICATIONS

	Model 50200 (European Only)	Model 50220 (European Only)
OPEN FLOW	44.5gpm (200lpm)	44.5gpm (200lpm)
BODY	Bronze	Bronze
IMPELLER MATERIAL	Neoprene/ Nitrile	Neoprene/Nitrile
SHAFT MATERIAL	Stainless Steel	Stainless Steel
SHAFT SEAL	Carbon/Ceramic Mechanical	Carbon/Ceramic Mechanical
PULLEY DIAMETER	7" (178mm)	7" (178mm)
BELT	2 Groove A, 1 Groove B	2 Groove A, 1 Groove B
CLUTCH VOLTAGE	12 / 24 vdc	12 / 24 vdc
BEARING	Twin row, ball type	Twin row, ball type
PORT SIZE	1-½" (38.1 mm) BSP	1-½" (38.1 mm) Flange
PRIME DRY, WET	7.8ft (2.4m)	7.8ft (2.4m)
LIQUID TEMP	45F to 180F (7C to 82C)	45F to 180F (7C to 82C)
SIZE	9-½" X 6" X 7" (239 X 153 X 178mm)	9-½" X 6" X 7" (239 X 153 X 178mm)
SHIP WEIGHT	25 lb (11.2 kg)	25 lb (11.2 kg)

18330 & 50270 Series



SPECIFICATIONS

	Model 18330	Model 50270
OPEN FLOW	83gpm (314lpm)	60gpm (270lpm)
BODY	Bronze	Bronze
IMPELLER MATERIAL	Neoprene/ Nitrile	Neoprene/Nitrile
SHAFT MATERIAL	Stainless Steel	Stainless Steel
SHAFT SEAL	Carbon/Ceramic Mechanical	Carbon/Ceramic Mechanical
PULLEY DIAMETER	7" (178mm)	7" (178mm)
BELT	2 Groove A, 1 Groove B	2 Groove A, 1 Groove B
CLUTCH VOLTAGE	12 / 24 vdc	12 / 24 vdc
BEARING	Twin row, ball type	Twin row, ball type
PORT SIZE	2" (50.8mm) NPT	2" (5.8mm) BSP, 2" (5.8mm) Flange
PRIME DRY, WET	7.8ft (2.4m)	7.8ft (2.4m)
LIQUID TEMP	45F to 180F (7C to 82C)	45F to 180F (7C to 82C)
SIZE	12-7/16" X 5-15/16" X 5-3/4" (316x151x146mm)	10" X 7" X 7" (264 X 170 X 178mm)
SHIP WEIGHT	24 lb (11 kg)	27 lb (12.2 kg)



STAINLESS STEEL PUMPS

28230 & 28240 Series



FEATURES

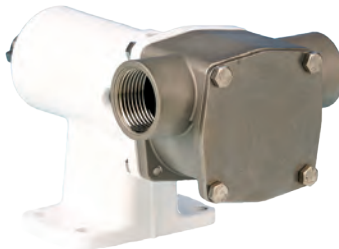
- Self primes from dry up to 16.4ft (5.0 metres)
- Flows up to 10.6 gal (40 liters) per minute
- Pressure up to 43.5 psi (3.0 bar)
- Handles hard or soft solids - max. .2in (5mm) diameter
- Tolerates abrasive wear - replaceable wearplate
- Non pulsating flow, proportional to speed
- Handles viscosities up to 4,000 centiPoise
- Minimal shear to thixotropic fluids
- Easy to service and maintain
- Fits IEC standard motor B3/B14, frame 80 (Model 28240)



SPECIFICATIONS

SEAL	Carbon / Ceramic mechanical face seal
OPTIONAL	Tungsten Carbide / Ceramic hard faced mechanical seal, Nitrile Lip seal on shaft sleeve, Carbon / Ceramic flushed seal, Tungsten Carbide / Ceramic hard faced flushed seal
SEAL ELASTOMER	Nitrile or Viton
PUMP HEAD	Stainless steel 316, as-cast interior and exterior finish
END COVER	Stainless steel 316 grade
SHAFT	Stainless steel 316 grade
BEARINGS	Greased ball bearings (Model 28230)
BEARING HOUSING	Epoxy coated cast iron (Model 28230)
BEARINGS	Uses motor bearings (Model 28240)
MOTOR ADAPTOR	Epoxy coated cast iron (Model 28240)
PORTS	¾" (19mm) BSP internal thread to BS21 (DIN2999)
WEIGHT	6.8 lbs (2.8kg) (Model 28230)
WEIGHT	5.7 lbs (2.6kg) (Model 28240)
PRESSURE OPTIONS	Standard - Max 2.5 bar High - Max 3.0 bar
IMPELLER ELASTOMER OPTION	Neoprene, E.P.D.M., Nitrile, Viton*

28330 & 28340 Series



FEATURES

- Self primes from dry up to 16.4ft (5.0 metres)
- Flows up to 21 gal (80 liters) per minute
- Pressure up to 58 psi (4.0 bar)
- Handles hard or soft solids - max. (.2in) 6mm diameter
- Tolerates abrasive wear - replaceable wearplate
- Non pulsating flow, proportional to speed
- Handles viscosities up to 4,000 centiPoise
- Minimal shear to thixotropic fluids
- Fits IEC standard motor B3/B14, frame 80 (Model 28340)
- Easy to service and maintain

SPECIFICATIONS

SEAL	Carbon / Ceramic mechanical face seal
OPTIONAL:	Tungsten Carbide / Ceramic hard faced mechanical seal
NITRILE LIP SEAL ON SHAFT SLEEVE	Tungsten Carbide / Ceramic hard faced mechanical seal, Nitrile Lip seal on shaft sleeve, Carbon / Ceramic flushed seal, Tungsten Carbide / Ceramic hard faced flushed seal
SEAL ELASTOMER	Nitrile or Viton
PUMP HEAD	Stainless steel 316, as-cast interior and exterior finish
END COVER	Stainless steel 316 grade
SHAFT	Stainless steel 316 grade (Model 28330)
SHAFTS	Stainless steel 316 grade, shaft extension (Model 28340)
BEARINGS	Greased ball bearings (Model 28330)
BEARING HOUSING	Epoxy coated cast iron (Model 28330)
BEARINGS	Uses motor bearings (Model 28340)
MOTOR ADAPTOR	Epoxy coated cast iron (Model 28340)
PORTS	1" (25.4mm) BSP internal thread to BS21 (DIN2999)
WEIGHT	9.3 lbs (4.2kg) (Model 28330)
WEIGHT	7.3 lbs (3.3kg) (Model 28340)
PRESSURE OPTIONS STANDARD	Max 36 psi (2.5 bar) High - Max 58 psi (4.0 bar)
IMPELLER ELASTOMER OPTION	Neoprene E.P.D.M. Nitrile Viton*