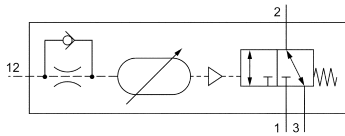


# Time delay valves series VZ

3/2-way

M5 (10/32 UNF) and G1/8 • 160 and 600 NI/min (0.163 - 0.610 Cv)



## Design, function and technical data

This valve may be used either normally open or normally closed.

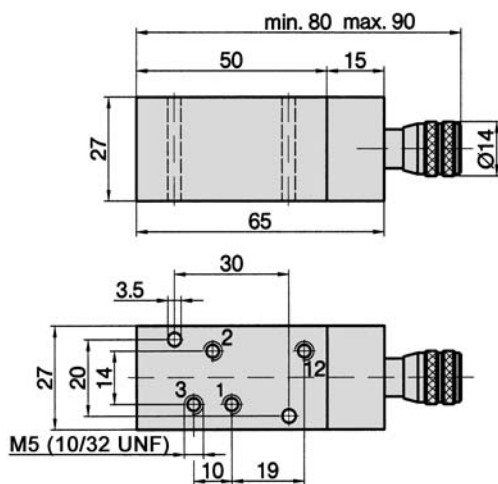
Normally closed: pressure inlet port 1 (P).

Normally open: pressure inlet port 3 (R).

A signal arriving at 12 (Z) switches the flow of the valve from 1 (P) to 2 (A) and closes port 3 (R) after the set time has expired.

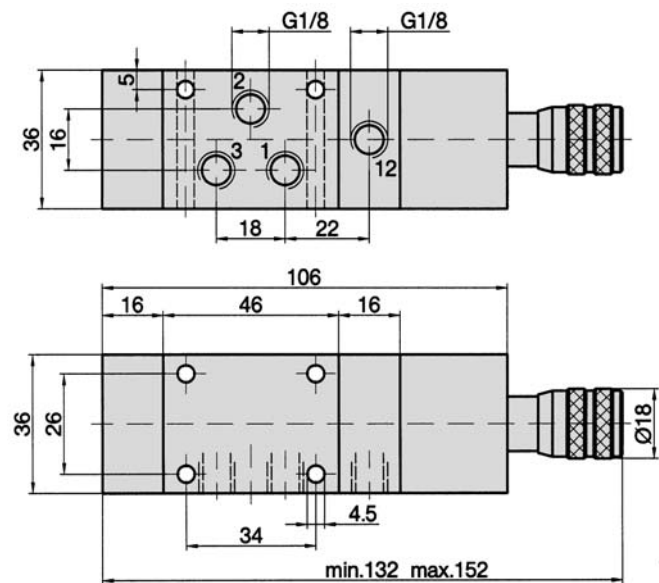
Instead of supplying main pressure to either port 1 or 3, the branched signal line can be connected to 1 or 3. The signal line to port 1 or 3 must not be longer than the signal line to port 12

### VZ-25-310



- 1 = pressure supply (exhaust)
- 2 = outlet
- 3 = exhaust (pressure supply)
- 12 = signal port

### VZ-18-310



- 1 = pressure supply (exhaust)
- 2 = outlet
- 3 = exhaust (pressure supply)
- 12 = signal port

Order number	VZ-25-310	VZ-18-310
Connection	M5 (10/32 UNF)	G1/8
Nominal size	3.2 mm	6 mm
Nominal flow	160 NI/min (0.163 Cv)	600 NI/min (0.610 Cv)
Working pressure range	3 ... 10 bar (43.5 ... 145 psi)	
Pilot pressure range	equivalent to working pressure	
Time range	0.25 ... 5 s	0.5 ... 10 s oder 1... 20 s
Temperature range	- 10 °C ... + 70 °C (+ 14 °F ... + 158 °F)	
Materials	Body: Al (anodized), Seals: NBR and POM, Inner parts: Al, stainless steel, brass	
Medium	Compressed air in accordance with ISO 8573-1:2010, Class 7:2:4 – and free of aggressive additives.	
Weight	0.135 kg (0.297 lb.)	0.36 kg (0.79 lb.)