

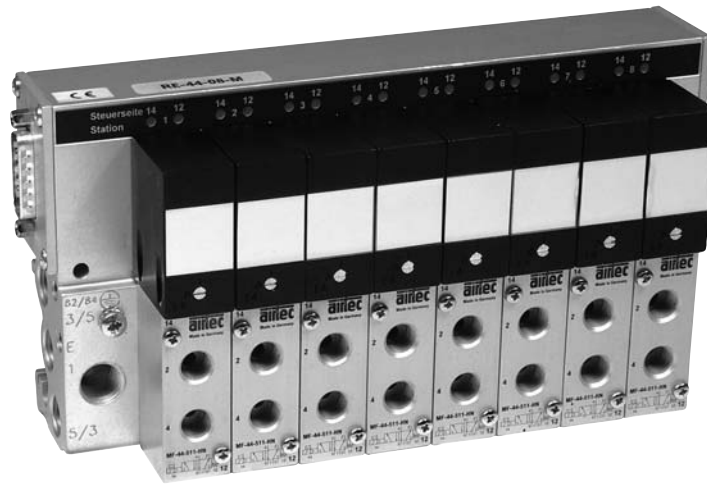
Valve terminals RE-44 with Multi-pin connection

4 – 16 valve stations

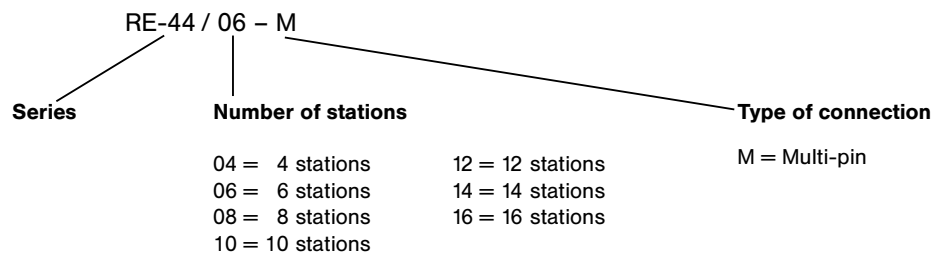
330 und 360 NI/min (0.335 and 0.366 Cv)



Technical data for series RE-44



Order code



Design and function

Manifold system with integrated electrical connection including LED, manual override and built-in circuit protection.

The above order code covers only the manifold. The valves and the multi-pin plug with cable must be ordered separately.

The valve terminal is delivered pre-assembled and function tested. If not specified with the order, valve configuration is as follows:

Valves are mounted according to their order number, starting with high numbers (MF-44-533-HN-...) on the side of the multi-pin, ending with low numbers (MF-44-510-HN-...) on the opposite side, followed by blind plates (RE-44-VP, if ordered).

Technical data	Multi-pin
Pressure supply 1	G1/4 left, right and top
Exhaust 3 + 5	G1/4 left and right
Exhaust 82/84	M7 left and right
External pilot supply	M7 left and right
Outlets 2 + 4	G1/8 (Valves)
Number of stations	4, 6, 8, 10, 12, 14 and 16
Materials	Body: Al; mounting parts: steel zinc plated; Seals: NBR; Inner parts: plastic, copper, brass
Degree of protection	IP 65 acc. to EN 60529 with D-sub-plug 28-ST-10-M1-26-105 or 28-ST-10-M1-26-110
Temperature range	+ 5 °C ... + 50 °C (+41 °F ... +122 °F)
Connectors	Multi-pin D-sub HD 26-pins
Voltage	24 V DC +/- 10 %
Status display	yellow
Mounting	2 mounting holes for M4 x 40 Mounting rail according DIN EN 60715 TH35

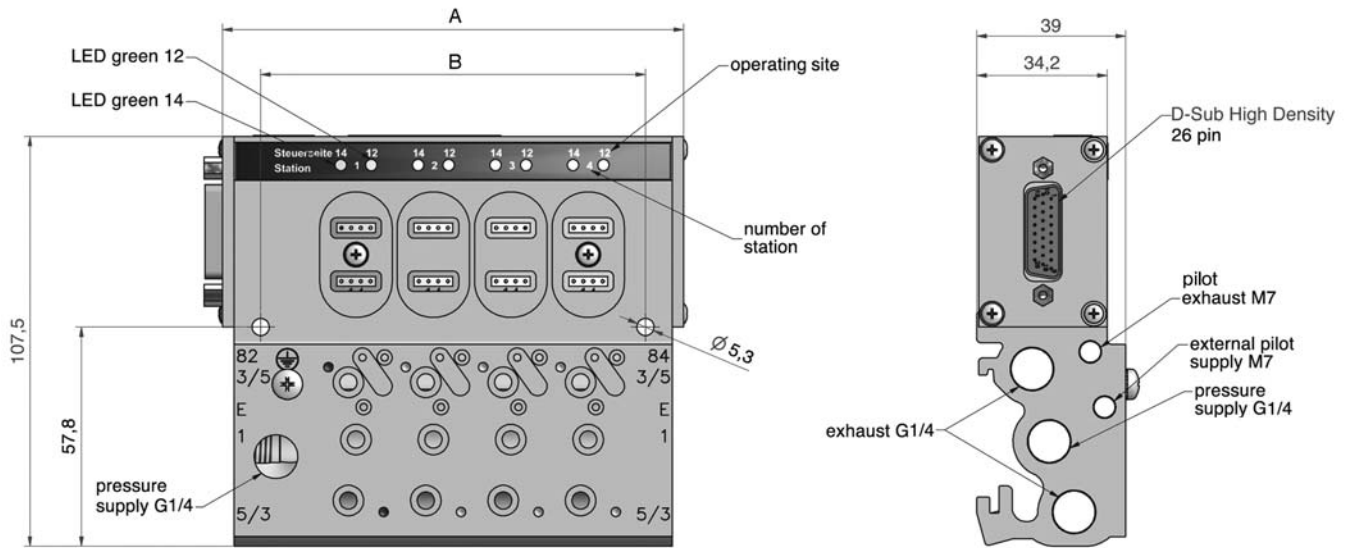
Valve terminals RE-44 with Multi-pin connection

4 – 16 valve stations

330 und 360 NI/min (0.335 and 0.366 Cv)



Multi-pin manifold



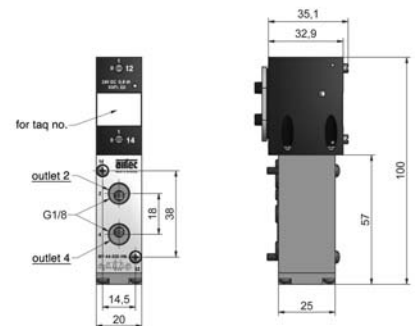
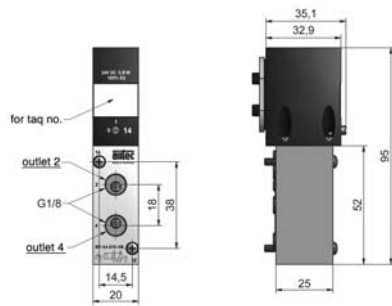
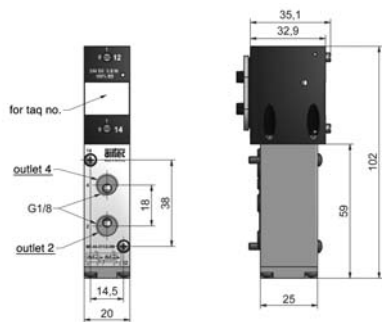
- 1 = pressure supply
- 3, 5 = exhausts
- 82, 84 = external pilot exhausts
- E = pilot supply

7

MF-44-311/2-HN-442
MFE-44-311/2-HN-442

MF-44-510-HN-442
MF-44-511-HN-442
MFE-44-511-HN-442

MF-44-520-HN-442
MF-44-530-HN-442
MF-44-533-HN-442



Pin assignment see page 7.042.

Order number	Number of stations	X	Y	Weight (without valves)
RE-44/04-M	4	120.9	100.9	0.65 kg (1.433 lbs.)
RE-44/06-M	6	161.5	141.5	0.87 kg (1.918 lbs.)
RE-44/08-M	8	202.1	182.1	1.1 kg (2.425 lbs.)
RE-44/10-M	10	242.7	222.7	1.3 kg (2.866 lbs.)
RE-44/12-M	12	283.3	263.3	1.5 kg (3.307 lbs.)
RE-44/14-M	14	323.9	303.9	1.7 kg (3.748 lbs.)
RE-44/16-M	16	364.5	344.5	1.9 kg (4.189 lbs.)

Valve terminals RE-44 with Multi-pin connection

4 – 16 valve stations

330 und 360 NI/min (0.335 and 0.366 Cv)



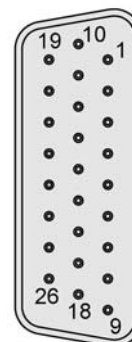
Pin assignment RE-44 with D-Sub 26-pin Multi-pin

Counted from left to right.

Pin	4 – 12 stations	14 stations	16 stations	wire coding
1	Valve 1 pilot port 14	Valve 1 pilot port 14	Valve 1 pilot port 14	white
2	Valve 1 pilot port 12	Valve 1 pilot port 12	Valve 1 pilot port 12	brown
3	Valve 2 pilot port 14	Valve 2 pilot port 14	Valve 2 pilot port 14	green
4	Valve 2 pilot port 12	Valve 2 pilot port 12	Valve 2 pilot port 12	yellow
5	Valve 3 pilot port 14	Valve 3 pilot port 14	Valve 3 pilot port 14	grey
6	Valve 3 pilot port 12	Valve 3 pilot port 12	Valve 3 pilot port 12	pink
7	Valve 4 pilot port 14	Valve 4 pilot port 14	Valve 4 pilot port 14	blue
8	Valve 4 pilot port 12	Valve 4 pilot port 12	Valve 4 pilot port 12	red
9	Valve 5 pilot port 14	Valve 5 pilot port 14	Valve 5 pilot port 14	black
10	Valve 5 pilot port 12	Valve 5 pilot port 12	Valve 5 pilot port 12	violet
11	Valve 6 pilot port 14	Valve 6 pilot port 14	Valve 6 pilot port 14	grey/pink
12	Valve 6 pilot port 12	Valve 6 pilot port 12	Valve 6 pilot port 12	red/blue
13	Valve 7 pilot port 14	Valve 7 pilot port 14	Valve 7 pilot port 14	white/green
14	Valve 7 pilot port 12	Valve 7 pilot port 12	Valve 7 pilot port 12	brown/green
15	Valve 8 pilot port 14	Valve 8 pilot port 14	Valve 8 pilot port 14	white/yellow
16	Valve 8 pilot port 12	Valve 8 pilot port 12	Valve 8 pilot port 12	yellow/brown
17	Valve 9 pilot port 14	Valve 9 pilot port 14	Valve 9 pilot port 14	white/grey
18	Valve 9 pilot port 12	Valve 9 pilot port 12	Valve 10 pilot port 14	grey/brown
19	Valve 10 pilot port 14	Valve 10 pilot port 14	Valve 11 pilot port 14	white/pink
20	Valve 10 pilot port 12	Valve 10 pilot port 12	Valve 12 pilot port 14	pink/brown
21	Valve 11 pilot port 14	Valve 11 pilot port 14	Valve 13 pilot port 14	white/blue
22	Valve 11 pilot port 12	Valve 12 pilot port 14	Valve 14 pilot port 14	brown/blue
23	Valve 12 pilot port 14	Valve 13 pilot port 14	Valve 15 pilot port 14	white/red
24	Valve 12 pilot port 12	Valve 14 pilot port 14	Valve 16 pilot port 14	brown/red
25	Ground	Ground	Ground	white/black
26	free	free	free	-

View on valve terminal (plug)

D-Sub 26-pin



Wiring colour acc. to DIN 47100 (coloured or assigned with numbers).

Explanations for PIN-assignment (26 pins available)

- Terminal 4 – 12 stations All stations can be completely mounted with 2 x 3/2-way and 5/2-way double solenoid or 5/3-way valves.
- Terminal 14 stations Stations 1 – 10 can be mounted with 2 x 3/2-way and 5/2-way double solenoid or 5/3-way valves. Stations 11 – 14 can be only mounted with single solenoid valves.
- Terminal 16 stations Stations 1 – 8 can be mounted with 2 x 3/2-way and 5/2-way double solenoid or 5/3-way valves. Stations 9 – 16 can be only mounted with single solenoid valves.

Multi-pin D-Sub-connector, 26-pins with cable

Order code	Description	Cable length
28-ST-10-M1-26-105	Multi-pin D-Sub-connector, 26-pins, multi-plug, straight	5 m
28-ST-10-M1-26-110	Multi-pin D-Sub-connector, 26-pins, multi-plug, straight	10 m

Valve terminals RE-44 with Multi-pin connection

4 – 16 valve stations

330 und 360 NI/min (0.335 and 0.366 Cv)

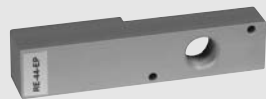


Valve and accessories for series RE-44

Valves

MF-44-311/2-HN-442	2 x 3/2-way solenoid valve NC, spring return
MF-44-510-HN-442	5/2-way solenoid valve, monostable with air spring return
MF-44-511-HN-442	5/2-way solenoid valve, monostable with spring return
MF-44-520-HN-442	5/2-way solenoid valve, bistable
MF-44-530-HN-442	5/3-way solenoid valve, center position closed
MF-44-533-HN-442	5/3-way solenoid valve, center position exhausted
MFE-44-311/2-HN-442	2 x 3/2-way solenoid valve, monostable with spring return
MFE-44-511-HN-442	5/2-way solenoid valve with spring return, ext. pilot supply

Single elements



Blind plate with pressure supply port G1/4
RE-44-EP

The blind plate with pressure supply port (G1/8) is used if 3 different operating pressures are required. Pressure access is always to channel 1. The supply is only possible from top. The blind plate requires 1 valve station.

The use of the RE-44-EP requires always the use of 2 dividing plates (see below).

Mounting screws and seals are included.

Materials Al, NBR, Steel

Weight 0,090 kg (0.198 lb.)



Blind plate
RE-44-VP

The blind plate is needed to close unused valve stations on the terminal. Seals are provided for the electrical and pneumatical ports. The IP-protection is guaranteed.

Mounting screws and seals are included.

Materials Al, NBR, Steel

Weight 0,100 kg (0.220 lb.)



Dividing plate
RE-44-DT

The dividing plate RE-44-DT can only be used in channel 1. The number of dividing plates is not limited and provides the option on additional different operating pressures. The mounting is always from the inside to the outside. By working with more than 2 different operating pressures, a blind plate RE-44-EP must be used.

Required mounting tools Allen key 4 mm and mounting pin Ø 4

Materials Brass, Steel, NBR

Weight 0,010 kg (0.022 lb.)



Dividing plate
RE-04-DT

The dividing plate RE-04-DT is used for the separation of 2 different operating pressures. It can be mounted in channels 1, 3 and 5. In each channel only 1 dividing plate can be mounted.

Required mounting tools Allen key 4 mm and screwdriver

Materials Brass, Steel, NBR

Weight 0,010 kg (0.022 lb.)

Suitable fittings

Straight push-in fittings

Plugs

Silencers

series 44-APC

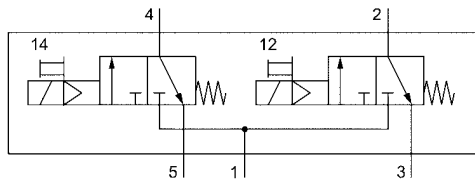
40-279-1-14, 40-279-1-18, 40-279-1-M7, 40-277-14

40-90-014, 40-501-14, 40-502-M7

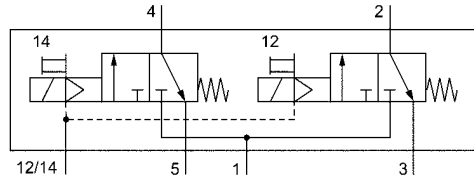
Valves MF-44

for valve terminal RE-44

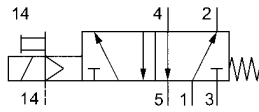
330 und 360 NI/min (0.335 and 0.366 Cv)



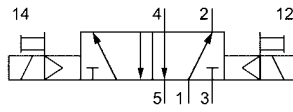
MF-44-311/2-HN-442



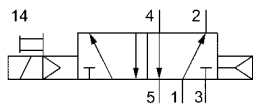
MFE-44-311/2-HN-442



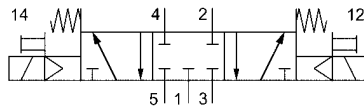
MFE-44-511-HN-442



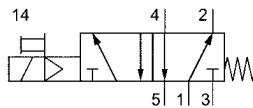
MF-44-520-HN-442



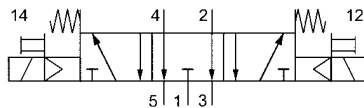
MF-44-510-HN-442



MF-44-530-HN-442



MF-44-511-HN-442



MF-44-533-HN-442



Design and function

Spool valve actuated by an electrical signal.
Mounting screws and seals are included.

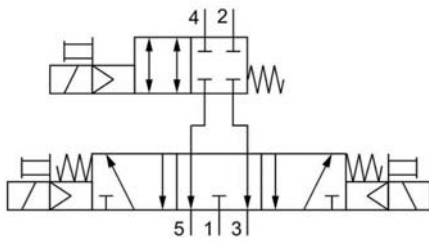
Order number ¹⁾	MF-44-311/2-...	MF-44-510-...	MF-44-511-...	MF-44-520-...	MF-44-530-...	MF-44-533-...	MFE-44-311/2-...	MFE-44-511-...
Function	2 x 3/2-way NC, spring return	5/2-way single solenoid air spring return	5/2-way single solenoid spring return	5/2-way double solenoid	5/3-way center position closed	5/3-way center position exhausted	2 x 3/2-way NC, spring return ext. pilot supply	5/2-way spring return ext. pilot supply
Connection	G1/8 at 2 and 4; flange at 1, 3, 5							
Nominal size	4 mm							
Medium	Compressed air in accordance with ISO 8573-1:2010, Class 7:2:4 – and free of aggressive additives.							
Flow rate	330 NI/min (0.335 Cv)	360 NI/min (0.366 Cv)					330 NI/min (0.335 Cv)	360 NI/min (0.366 Cv)
Working pressure range	3 ... 8 bar (44 ... 116 psi)	2.5 ... 8 bar (36 ... 116 psi)	3 ... 8 bar (44 ... 116 psi)	2.5 ... 8 bar (36 ... 116 psi)	3 ... 8 bar (44 ... 116 psi)		1.5 ... 8 bar (21.75 ... 116 psi)	0 ... 8 bar (0 ... 116 psi)
Pilot pressure range							3 ... 8 bar (44 ... 116 psi)	3 ... 8 bar (44 ... 116 psi)
Response time at 6 bar	on 16 ms off 30 ms	on 12 ms off 38 ms		on 12 ms		on 12 ms off 38 ms	on 16 ms off 30 ms	on 12 ms off 38 ms
Temperature range	+ 5 °C ... + 50 °C (+ 41 °F ... + 122 °F)							
Materials	Body: Al (anodized), plastic; Seals: NBR and POM; Inner parts: Al, stainless steel and brass							
Voltage	24 V DC ± 10 %							
Power consumption	2 x 0.8 W	0.8 W		2 x 0.8 W			2 x 0.8 W	0.8 W
Degree of protection	IP 65 according to EN 60529 mounted on manifold RE-44							
Weight	0.160 kg (0.353 lb.)	0.150 kg (0.331 lb.)		0.160 kg (0.353 lb.)				0.150 kg (0.331 lb.)

¹⁾ Please specify complete according to the order codes (see below circuit symbols).

Valve MFE-44-544/2

for valve terminal RE-44

250 NI/min (0.254 Cv)



MFE-44-544/2-HN-442

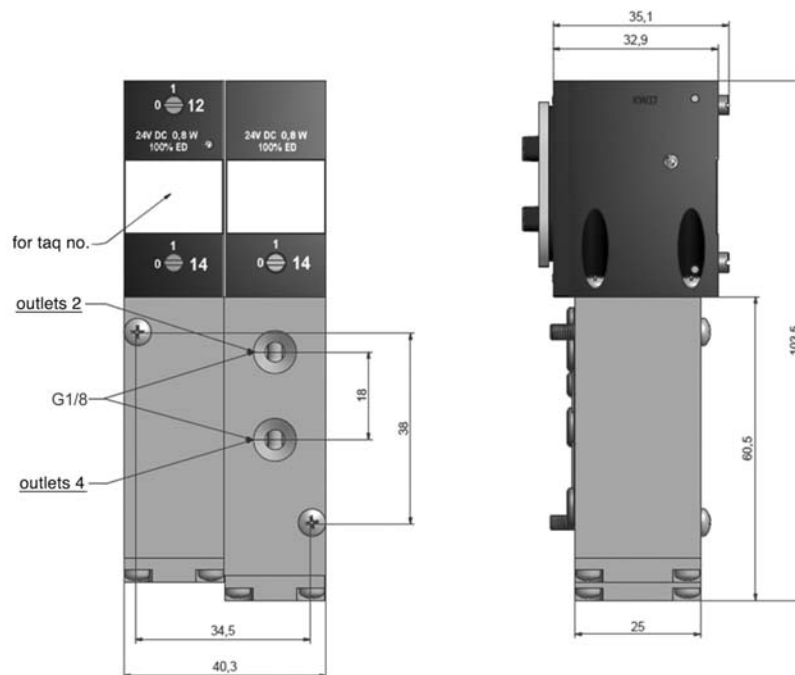


Design and function

This hybrid valve combines a 5/3 open centre double solenoid valve with a 4/2 solenoid spring return valve, to give a 5/3 valve which can function either as an open centre 5/3 valve or as a closed centre 5/3 valve.

Furthermore this configuration can be thought of as "Normally Closed" since all ports are closed in the absence of any electrical signals to the coils.

Dimensions



Order number	MFE-44-544/2-HN-442
Connection 1, 3 and 5	Flange
Connection 2 and 4	G1/8
Nominal size	4 mm
Nominal flow	250 NI/min (0.254 Cv)
Working pressure range	2 ... 8 bar (29 ... 116 psi)
Pilot pressure range	3 ... 8 bar (44 ... 116 psi)
Temperature range	+ 5 °C ... + 50 °C (+ 41 °F ... + 122 °F)
Medium	compressed air
Assembly position	Any
Voltage	24 V DC ± 10 %
Power consumption	0,8 W per solenoid coil
Degree of protection	IP 65 according to EN 60529 mounted on manifold RE-44
Materials	Body: Al (anodized), plastic; Seals: NBR and POM; Inner parts: Al, stainless steel, brass
Weight	0,335 kg (0.738 lb.)