

# Valve terminal RE-04 with Multi-pin connection

4 – 16 valve stations

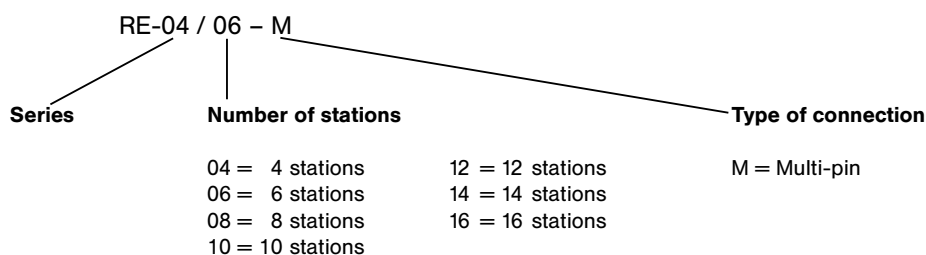
360 NI/min (0.366 Cv)



## Technical data for series RE-04



## Order code



## Design and function

Manifold system with integrated electrical connection including LED, manual override and built-in circuit protection.

Double solenoid valves and 5/3-way valves require 2 stations on the manifold.

The above order code covers only the manifold. The valves and the multi-pin plug with cable must be ordered separately.

The valve terminal is delivered pre-assembled and function-tested. If not specified with the order, valve configuration is as follows: Valves are mounted according to their order number, starting with high numbers on the side of the multi-pin, ending with low numbers on the opposite side, followed by blind plates (if ordered).

Technical data	Multi-pin
Working pressure range	3 ... 8 bar (44 ... 116 psi)
Temperature range	– 10 °C ... + 70 °C (+ 14 °F ... + 158 °F)
Degree of protection	IP 65 according to EN 60529 (with suitable connectors 28-ST-RE-...)
Power consumption	2 W per solenoid
Output signal	Polarized circuit protection, built-in surge protection
Voltage	24 V DC ± 10 %
Status display:	Valve solenoid energized
LED yellow	–
LED green	–
Connector (others on request)	19-pin multi-plug
Addressable sockets	–
Power consumption	–

**360 NI/min (0.366 Cv)**

Technical drawing of the 6-channel LED module (Type 6000) showing front and side views with dimensions and labels.

**Front View (Left):**

- Labels: Codierung, LED, M5, G1/8.
- Dimensions: 31, 24, 20.3, 9, A, B, 56.6, 20.4, 16, 4.5.
- Pin numbers: 14, 2, 4.

**Side View (Right):**

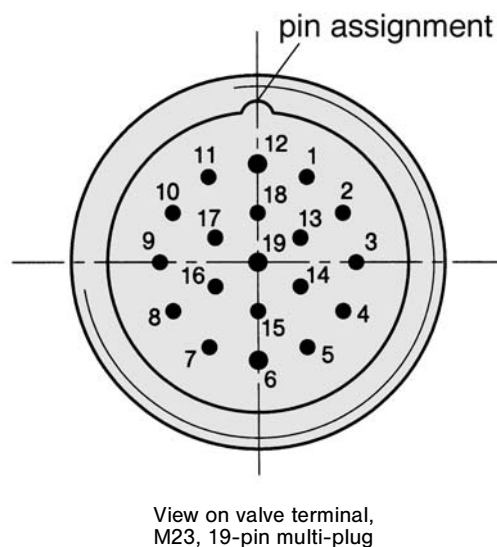
- Dimensions: 104.4, 19, 18.7, 8.6, 14, 17.4, 29, 56, 25, ca. 81, ca. 84.
- Thread: G 1/4 3x.
- Label: M4.
- Pin numbers: 3, 1, 5, 2, 4.

1 = pressure supply

- 1 = pressure supply  
2, 4 = outlets  
3, 5 = exhausts

Order number	A	B	Weight (without valves)
RE-04/04-M	90.9	140	0.510 kg (1.13 lbs.)
RE-04/06-M	131.5	180.6	0.720 kg (1.59 lbs.)
RE-04/08-M	172.1	221.2	0.930 kg (2.05 lbs.)
RE-04/10-M	212.7	261.8	1.140 kg (2.51 lbs.)
RE-04/12-M	253.3	302.4	1.350 kg (2.98 lbs.)
RE-04/14-M	293.9	343	1.560 kg (3.44 lbs.)
RE-04/16-M	334.5	383.6	1.770 kg (3.90 lbs.)

Pin	Valve solenoid	28-ST-RE-...-8 Cable-Code	28-ST-RE-...-16 Cable-Code
1	1	black 1	black 1
2	2	black 2	black 2
3	3	black 3	black 3
4	4	black 4	black 4
5	5	black 5	black 5
6	GND	black 9	black 9
7	6	black 6	black 6
8	7	black 7	black 7
9	8	black 8	black 8
10	9	–	black 17
11	10	–	black 10
12	PE	green / yellow	green / yellow
13	11	–	black 11
14	12	–	black 12
15	13	–	black 13
16	14	–	black 14
17	15	–	black 15
18	16	–	black 16
19	GND	–	black 18



# Valve terminal RE-04 with Multi-pin connection

4 – 16 valve stations

360 NI/min (0.366 Cv)

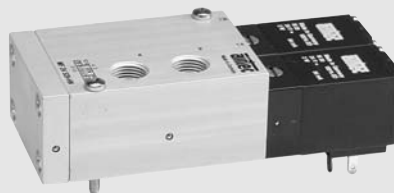


## Valves and accessories for series RE-04

### Valves



5/2-way,  
single solenoid  
**MF-04-510-HN-412**



5/2-way,  
double solenoid  
**MF-24-520-HN-412**



5/3-way,  
center position closed  
**MF-24-530-HN-412**

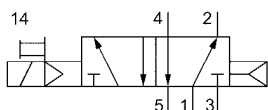


5/3-way,  
center position exhausted  
**MF-24-533-HN-412**

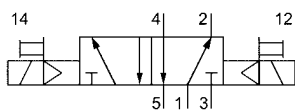
### Other single elements

<b>RE-04-V-EP</b>	Blind plate
<b>RE-04-DT</b>	Dividing plate for 2 different pressures
<b>28-ST-RE-100</b>	19-pin multi-plug, straight, no cable
<b>28-ST-RE-103-8</b>	19-pin multi-plug, straight, with 3 m cable maximum 8 stations
<b>28-ST-RE-103-16</b>	19-pin multi-plug, straight, with 3 m cable maximum 16 stations
<b>28-ST-RE-107-8</b>	19-pin multi-plug, straight, with 7 m cable maximum 8 stations
<b>28-ST-RE-110</b>	19-pin multi-plug, elbow, no cable
<b>28-ST-RE-113-16</b>	19-pin multi-plug, elbow, with 3 m cable maximum 16 stations
<b>28-ST-RE-117-8</b>	19-pin multi-plug, elbow, with 7 m cable maximum 8 stations
<b>28-ST-RE-117-16</b>	19-pin multi-plug, elbow, with 7 m cable maximum 16 stations
<b>54-RE-04-M</b>	Operating manual RE-04, Multi-pin, German
<b>54-RE-04-M-GB</b>	Operating manual RE-04, Multi-pin, English

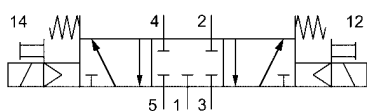
**Technical data for valves MF-04 and MF-24**



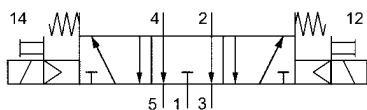
MF-04-510-HN-412



MF-24-520-HN-412



MF-24-530-HN-412



MF-24-533-HN-412



**Design and function**

Spool valve actuated by an electrical signal.  
 Mounting screws and seals are included.

Order number	MF-04-510-HN-412	MF-24-520-HN-412	MF-24-530-HN-412	MF-24-533-HN-412
Function	5/2-way single solenoid	5/2-way double solenoid	5/3-way center position closed	5/3-way center position exhausted
Connection	G1/8 at 2 and 4, sub-base mounted at 1, 3, 5			
Nominal size	4 mm			
Nominal flow	360 NI/min (0.366 Cv)			
Medium	Compressed air in accordance with ISO 8573-1:2010, Class 7:2:4 – and free of aggressive additives.			
Working pressure range	2.5 ... 8 bar (36 ... 116 psi)		3 ... 8 bar (44 ... 116 psi)	
Response time at 6 bar	on 13 ms off 16 ms	11 ms	on 15 ms off 22 ms	
Temperature range	– 10 °C ... + 70 °C			
Materials	Body: Al (anodized), plastic, Seals: NBR and POM; Inner parts: Al, stainless steel, brass			
Operating voltage	24 V DC ± 10 %			
Power consumption	2 W			
Degree of protection	IP 65 according to EN 60529, when assembled on RE-04			
Weight	0.11 kg (0.25 lb.)	0.23 kg (0.51 lb.)	0.232 kg (0.511 lb.)	