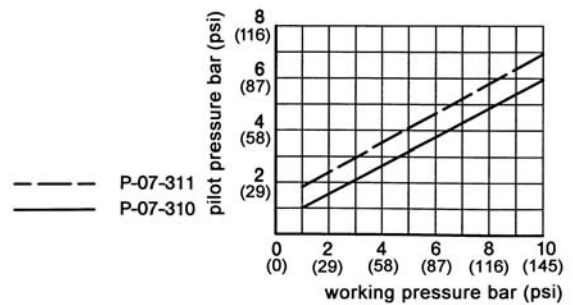
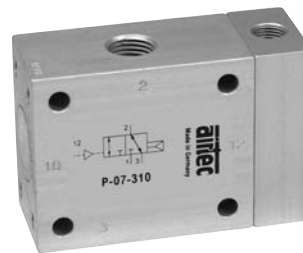
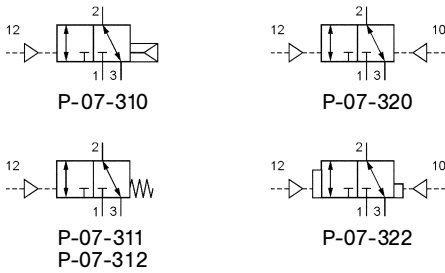


Series P-07

Pneumatically operated valves, 3/2-way
G1/4 • 1580 NI/min (1.606 Cv)



Design, function and technical data

Pneumatically operated spool valve. The valve switches upon pressurization of the pilot port (10 or 12).

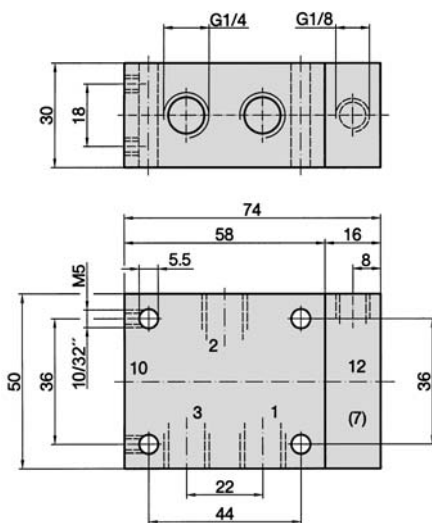
The valve P-07-311 is available for vacuum, order number P-07-312.

The pressure can be connected at 1 (normally closed) or at 3 (normally open).

For manifold mounting see series R-141/n (page 4.154).

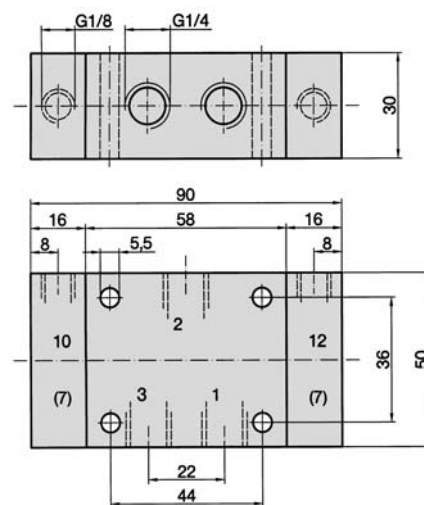
Valves of this series are available in explosion proof design in accordance with 2014/34/EU (ATEX). For further details see chapter 13 of this catalogue.

P-07-310, P-07-311, P-07-312



- 1, 3 = pressure inlet or exhaust
- 2 = outlet
- 12 = pilot port
- (7) = The pilot port can be repositioned by (180°).

P-07-320, P-07-322

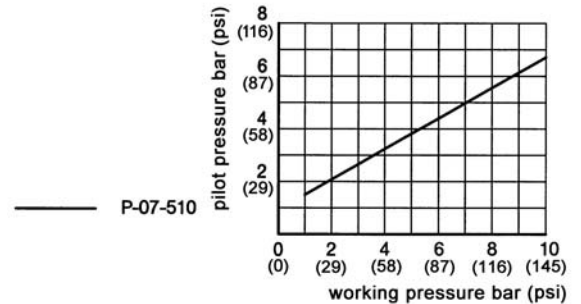
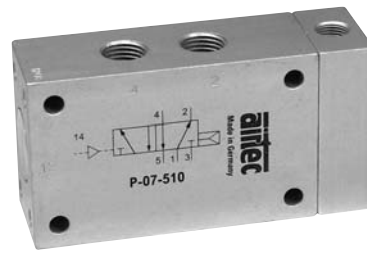
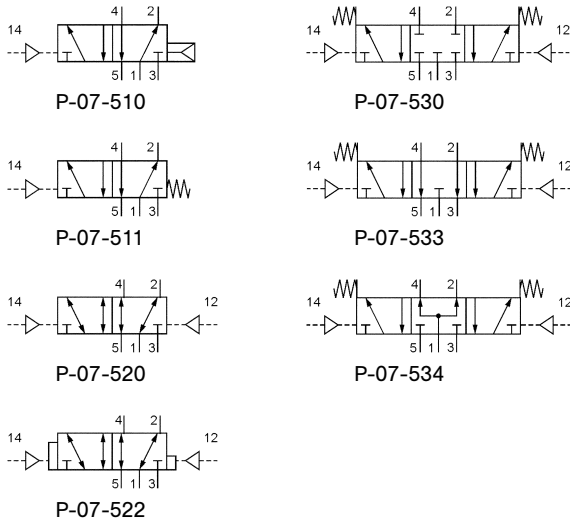


- 1, 2, 3 = for interchangeable use
- 12, 10 = pilot port
- (7) = The pilot port can be repositioned by (180°).

Order number	P-07-310	P-07-311	P-07-312	P-07-320	P-07-322
Function	3/2-way, single pilot air spring return	3/2-way, single pilot spring return		3/2-way, double pilot	3/2-way, double pilot dominant
Connection	G1/4				
Nominal size	9 mm				
Flow rate	1580 NI/min (1.606 Cv)				
Pressure range	1.5 ... 10 bar (22 ... 145 psi)	1 ... 10 bar (14 ... 145 psi)	- 0.95 ... 10 bar (- 14 ... 145 psi)	0 ... 10 bar (0 ... 145 psi)	
Pilot pressure range	see diagram			1.5 ... 10 bar (22 ... 145 psi)	
Temperature range	- 10 °C ... + 70 °C (+ 14 °F ... + 158 °F)				
Materials	Body: Al (anodized), Inner parts: Al, brass, stainless steel, Seals: NBR and POM				
Medium	Compressed air in accordance with ISO 8573-1: 2010, Class 7:2:4 - and free of aggressive additives.				
Weight	0.278 kg (0.613 lb.)	0.281 kg (0.619 lb.)	0.350 kg (0.772 lb.)		

Series P-07

Pneumatically operated valves, 5/2- and 5/3-way
G1/4 • 1300 and 1580 NI/min (1.321 and 1.606 Cv)



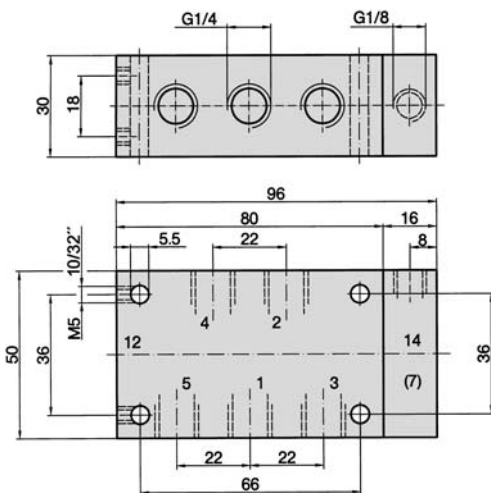
Design, function and technical data

Pneumatically operated spool valve. The valve switches upon pressurization of the pilot port (12 or 14).

For manifold mounting see series R-141/n resp. R-143/n (page 4.154).

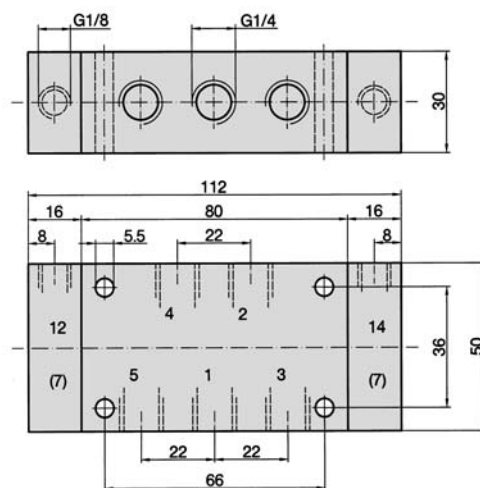
Valves of this series are available in explosion proof design in accordance with 2014/34/EU (ATEX). For further details see chapter 13 of this catalogue.

P-07-510, P-07-511



- 1 = pressure inlet
- 2, 4 = outlet
- 3, 5 = exhausts
- 14 = pilot port
- (7) = The pilot port can be repositioned by (180°).

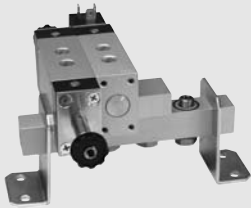
P-07-520, P-07-522, P-07-530, P-07-533, P-07-534



- 1 = pressure inlet
 - 2, 4 = outlet
 - 3, 5 = exhausts
 - 12, 14 = pilot port
 - (7) = The pilot port can be repositioned by (180°).
- P-07-520, P-07-522**
1, 2, 3, 4, 5 = for interchangeable use
12, 14 = pilot port

Order number	P-07-510	P-07-511	P-07-520	P-07-522	P-07-530	P-07-533	P-07-534
Function	5/2-way single pilot air spring return	5/2-way single pilot spring return	5/2-way double pilot	5/2-way double pilot dominant	5/3-way center position closed	5/3-way center position exhausted	5/3-way center position pressurized
Connection	G1/4						
Nominal size	9 mm						
Flow rate	1580 NI/min (1.606 Cv)				1300 NI/min (1.321 Cv)		
Pressure range	1,5 ... 10 bar (22 ... 145 psi)	0 ... 10 bar (0 ... 145 psi)	0 ... 10 bar (0 ... 145 psi)		0 ... 10 bar (0 ... 145 psi)		
Pilot pressure range	see diagram	2,5 ... 10 bar (36 ... 145 psi)	1,5 ... 10 bar (22 ... 145 psi)		3 ... 10 bar (43 ... 145 psi)		
Temperature range	- 10 °C ... + 70 °C (+ 14 °F ... + 158 °F)						
Materials	Body: Al (anodized), Inner parts: Al, brass, stainless steel, Seals: NBR and POM						
Medium	Compressed air in accordance with ISO 8573-1:2010, Class 7:2:4 – and free of aggressive additives.						
Weight	0.355 kg (0.783 lb.)	0.360 kg (0.794 lb.)	0.420 kg (0.926 lb.)				

P-manifolds for M-07 and P-07



P-manifold will be delivered completely assembled with valves if requested.



P-manifold with hollow bolts and O-rings.
 Available number of stations: see table on page 4.154
R-141/n



Hollow bolt without O-ring
H-143

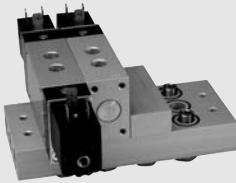


Blind plate for blank station
R-141-V
 page 4.154



Brackets (pair)
R-141-W
 page 4.154

P-R-S manifolds for M-07 and P-07



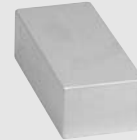
P-R-S-manifold will be delivered completely assembled with valves if requested.



P-R-S-manifold with hollow bolts and O-rings.
 Available number of stations: see table on page 4.154
R-143/n



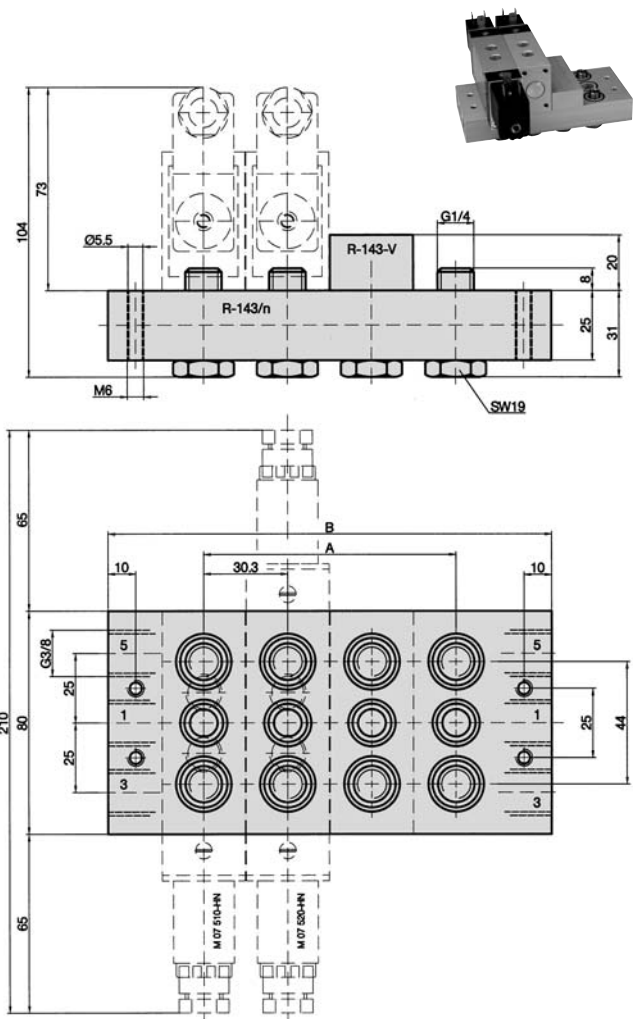
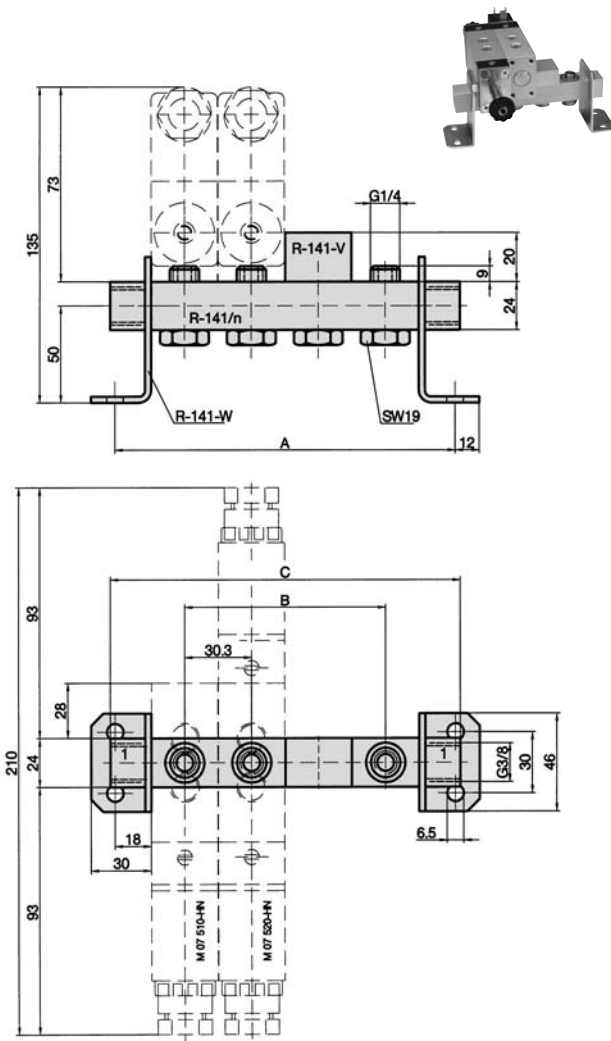
Hollow bolt without O-ring
H-143



Blind plate for blank station
R-143-V
 page 4.154

Dimensions for P-manifold R-141

Dimensions for P-R-S-manifold R-143



1 = pressure inlet

1 = pressure inlet
 3, 5 = exhausts

R-141-V

Blind plate for blank station.
 Material: Al (anodized).

R-143-V

Blind plate for blank station.
 Material: Al (anodized).

R-141-W

One pair of mounting brackets for P-Manifold R-141.
 Material: steel zinc plated.

R-143/n

P-R-S-manifold with hollow bolts and O-rings. Suitable for all 5/2- and 5/3-way valves of series M-07 and P-07.
 Material: Al (anodized), O-rings: NBR, hollow bolts: brass.

R-141/n

P-manifold with hollow bolts and O-rings. Within the brackets the manifold can be repositioned by 4 x 90°. Suitable for all valves of series M-07 and P-07.
 Material: Al (anodized), O-rings: NBR, hollow bolts: brass.

Order number	A	B	C	Weight
R-141/2	96.6	30.3	100	0.165 kg (0.364 lb.)
R-141/3	126.9	60.6	130	0.227 kg (0.500 lb.)
R-141/4	157.2	90.9	160	0.287 kg (0.633 lb.)
R-141/5	187.5	121.2	190	0.349 kg (0.769 lb.)
R-141/6	217.8	151.5	220	0.412 kg (0.908 lb.)
R-141/7	248.1	181.8	250	0.473 kg (1.043 lbs.)
R-141/8	278.4	212.1	280	0.532 kg (1.173 lbs.)
R-141/12	399.6	333.3	400	0.781 kg (1.722 lbs.)

Order number	A	B	Weight
R-143/4	90.9	160	0.841 kg (1.854 lbs.)
R-143/6	151.5	220	1.211 kg (2.670 lbs.)
R-143/12	333.3	400	2.240 kg (4.938 lbs.)