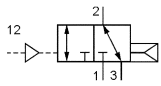
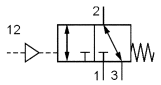


Series L-28

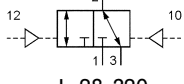
Pneumatically operated valves, 3/2-way
G1/8 • 600 NI/min (0.610 Cv)



L-28-310



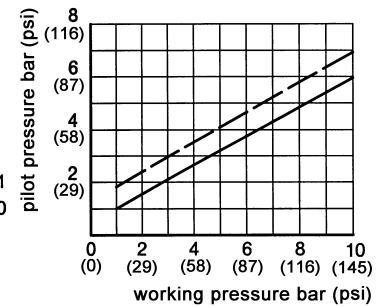
L-28-311



L-28-320



--- L-28-311
— L-28-310



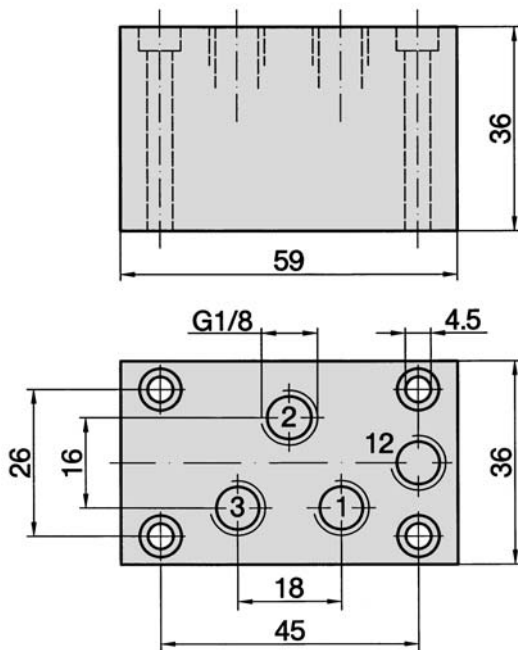
Design, function and technical data

Pneumatically operated spool valve. The valve switches upon pressurization of the pilot port (10 or 12).

The pressure can be connected at 1 (normally closed) or at 3 (normally open).

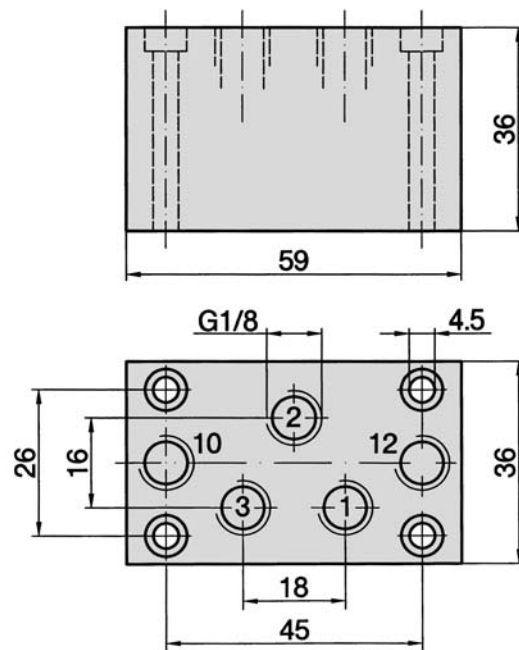
Valves of this series are available in explosion proof design in accordance with 2014/34/EU (ATEX). For further details see chapter 13 of this catalogue

L-28-310, L-28-311



1, 3 = pressure inlet or exhaust
2 = outlet
12 = pilot port

L-28-320

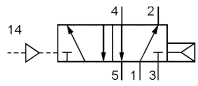


1, 2, 3 = for interchangeable use
12, 10 = pilot port

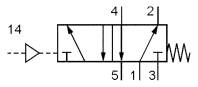
Order number	L-28-310	L-28-311	L-28-320
Function	3/2-way, single pilot air spring return	3/2-way, single pilot spring return	3/2-way, double pilot
Connection	G1/8		
Nominal size	6 mm		
Flow rate	600 NI/min (0.610 Cv)		
Pressure range	2 ... 10 bar (29 ... 145 psi)	1 ... 10 bar (14 ... 145 psi)	0 ... 10 bar (0 ... 145 psi)
Pilot pressure range	see diagram		2 ... 10 bar (29 ... 145 psi)
Temperature range	- 10 °C ... + 70 °C (+ 14 °F ... + 158 °F)		
Materials	Body: Al (anodized), Inner parts: Al, brass, stainless steel, Seals: NBR and POM		
Medium	Compressed air in accordance with ISO 8573-1: 2010, Class 7:2:4 – and free of aggressive additives.		
Weight	0.192 kg (0.423 lb.)		0.195 kg (0.430 lb.)

Series L-28

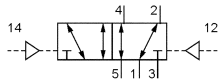
Pneumatically operated valves, 5/2-way
G1/8 • 600 NI/min (0.610 Cv)



L-28-510

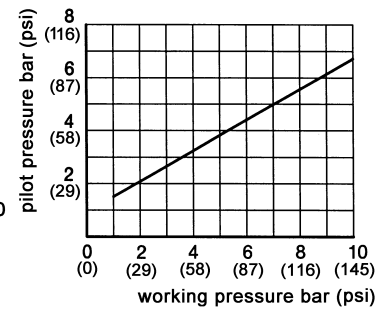


L-28-511



L-28-520

L-28-520-Q



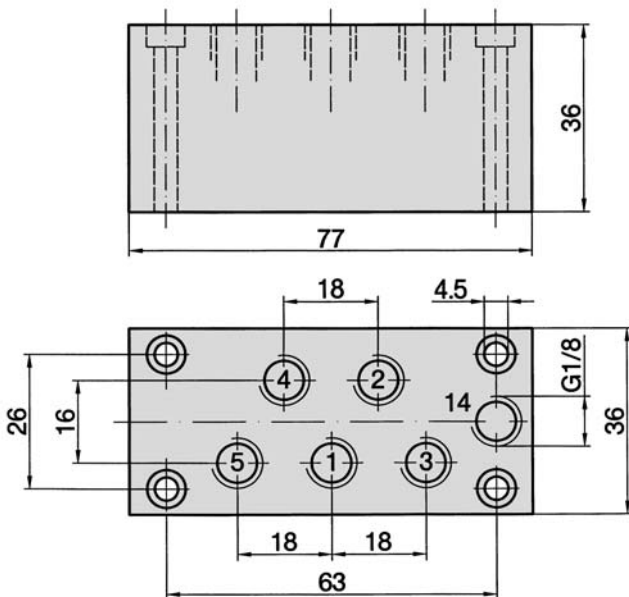
Design, function and technical data

Pneumatically operated spool valve. The valve switches upon pressurization of the pilot port (12 or 14).

Valve L-28-520 is available for use with vacuum (-0.95 ... 10 bar/-14 ... 175 psi). Order number changes to L-28-520-Q.

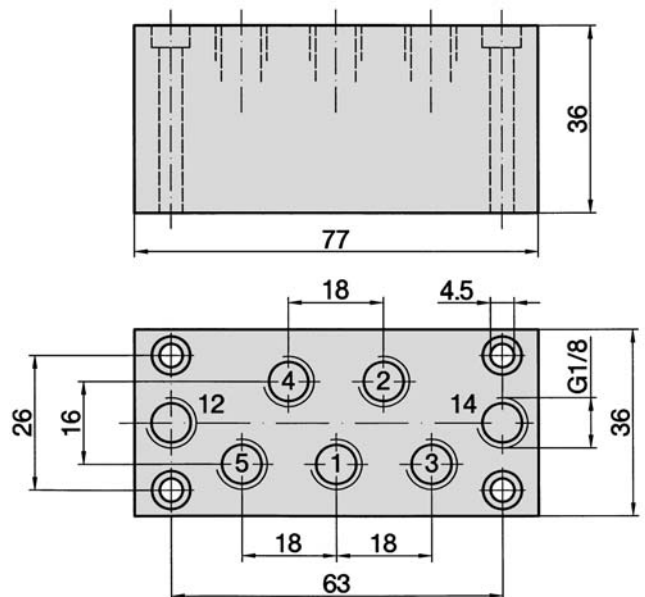
Valves of this series are available in explosion proof design in accordance with 2014/34/EU (ATEX). For further details see chapter 13 of this catalogue.

L-28-510, L-28-511



- 1 = pressure inlet
- 2, 4 = outlet
- 3, 5 = exhaust
- 14 = pilot port

L-28-520, L-28-520-Q



- 1, 2, 3, 4, 5 = for interchangeable use
- 12, 14 = pilot port

Order number	L-28-510	L-28-511	L-28-520
Function	5/2-way, single pilot air spring return	5/2-way, single pilot spring return	5/2-way, double pilot
Connection	G1/8		
Nominal size	6 mm		
Flow rate	600 NI/min (0.610 Cv)		
Pressure range	2 ... 10 bar (29 ... 145 psi)	0 ... 10 bar (0 ... 145 psi)	0 ... 10 bar (0 ... 145 psi)
Pilot pressure range	see diagram	3 ... 10 bar (43 ... 145 psi)	2 ... 10 bar (29 ... 145 psi)
Temperature range	10 °C ... + 70 °C (+ 14 °F ... + 158 °F)		
Materials	Body: Al (anodized), Inner parts: Al, brass, stainless steel, Seals: NBR and POM		
Medium	Compressed air in accordance with ISO 8573-1:2010, Class 7:2:4 – and free of aggressive additives.		
Weight	0.254 kg (0.560 lb.)		0.250 kg (0.551 lb.)