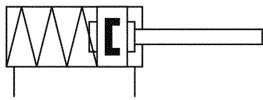


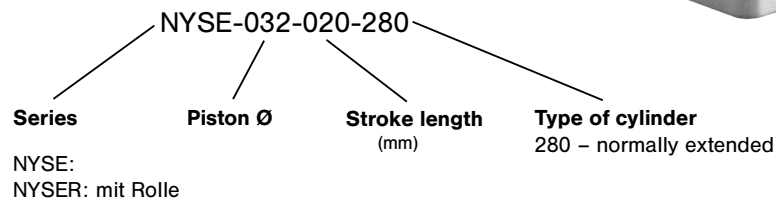
Stopper cylinders series NYSE

Single acting

M5 and G1/8 • piston Ø 20, 32, 50 and 80 mm



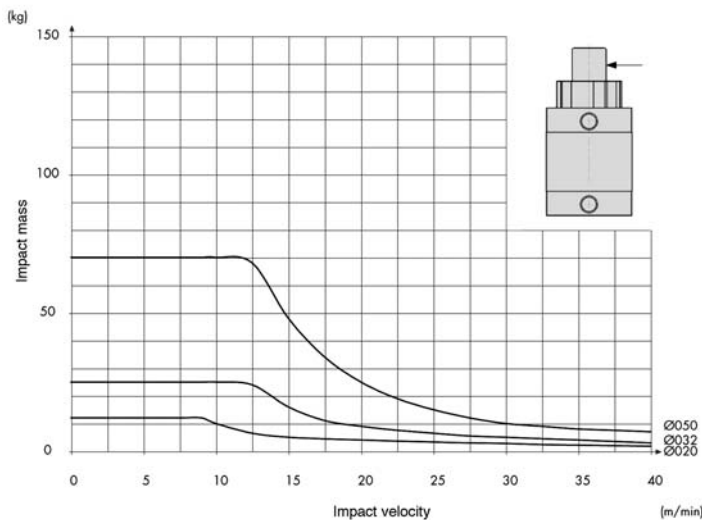
Order code



Design and function

Single acting compact cylinders with permanent magnet, built-in cushioning rings and return spring. Cylinder end caps are connected to the Al-profile by mounting screws. The cylinder profil has integrated sensor grooves.

Loading diagram



Mass (in kg) and spring force (theoretical)

Order number	kg	min. Load (N)	max. Load (N)
NYSE-020-015-280	0.20	28	36
NYSER-020-015-280	0.24		
NYSE-032-020-280	0.40	36	51
NYSER-032-020-280	0.46		
NYSE-050-030-280	1.04	49	78
NYSER-050-030-280	1.30		
NYSE-080-030-280	3.20	133	187
NYSER-080-030-280	4.50		

Weight in lbs. = x 2.2046

Order number	NYSE-020-015-280 NYSER-020-015-280	NYSE-032-020-280 NYSER-032-020-280	NYSE-050-030-280 NYSER-050-030-280	NYSE-080-030-280 NYSER-080-030-280
Piston Ø (mm)	20	32	50	80
Connection	M5	G1/8	G1/8	G1/8
Stroke lengths	15	20	30	30
Mounting position	any			
Operating pressure	2 ... 10 bar (29 ... 145 psi)			
Temperature range	- 20 °C ... + 80 °C (- 4 °F ... + 176 °F); - 10 °C ... + 150 °C on request (+ 14 °F ... + 302 °F)			
Medium	Compressed air in accordance with ISO 8573-1: 2001, Class 7 4 – and free of aggressive additives			
Materials	Cylinder tube: Al (anodized) End caps: Al (anodized) Piston rod: stainless steel Seals: PU/NBR			

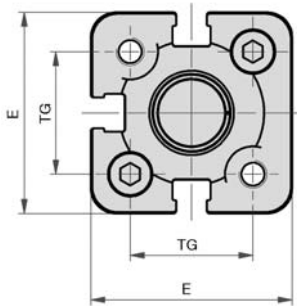
Stopper cylinders series NYSE

Single acting

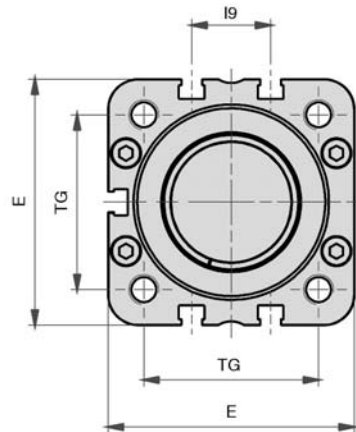
M5 and G1/8 • piston \varnothing 20, 32, 50 and 80 mm



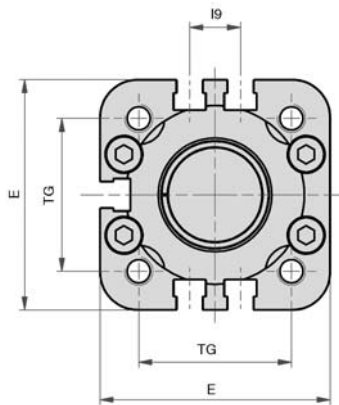
\varnothing 20



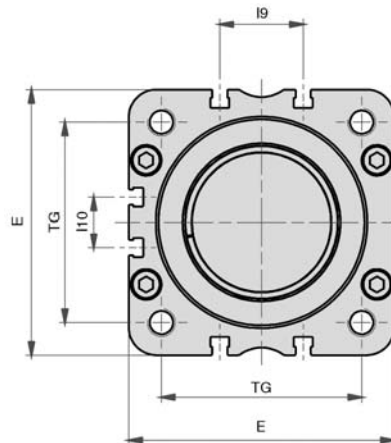
\varnothing 50



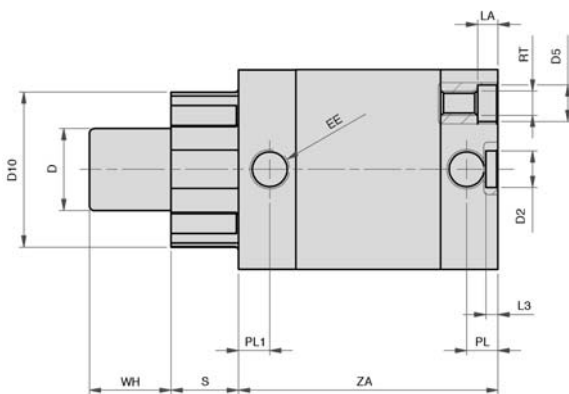
\varnothing 32



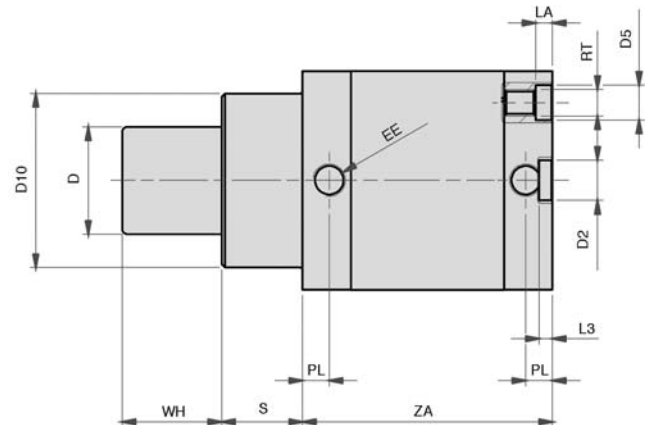
\varnothing 80



\varnothing 20 + \varnothing 32



\varnothing 50 + \varnothing 80



* The cylinder of \varnothing 20 have three sensor grooves. The cylinders of \varnothing 32 and \varnothing 50 mm have five sensor grooves. The cylinder of \varnothing 80 mm have six sensor grooves.

\varnothing	\varnothing D	\varnothing D2	\varnothing D5	\varnothing D10	E	EE	I9	I10	LA	L3	PL	PL1	RT	S	TG	WH	ZA
020	12	9	7.5	26	36	M5	-	-	4.5	3	7.5	9	M5	11.5	22	15	53
032	20	9	9	38	49	G1/8	10.8	-	5	3	8	8	M6	16.5	32.5	20	64
050	32	12	10.5	52	65.5	G1/8	21	-	5	4	8	-	M8	24.5	46.5	30	75
080	50	12	13.5	76	95.5	G1/8	30	18	3	4	8	-	M10	15	72	30	126

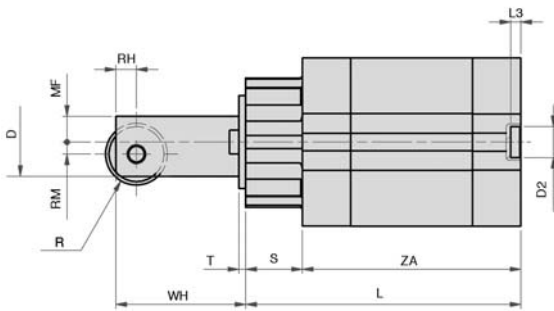
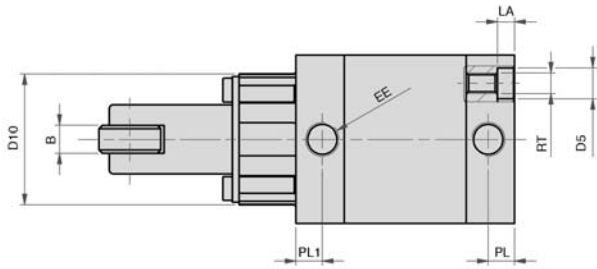
Stopper cylinders series NYSE

Single acting

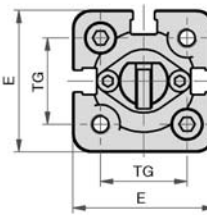
M5 and G1/8 • piston \varnothing 20, 32, 50 and 80 mm



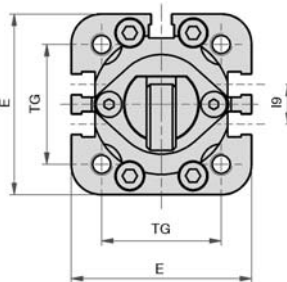
\varnothing 20 + \varnothing 32



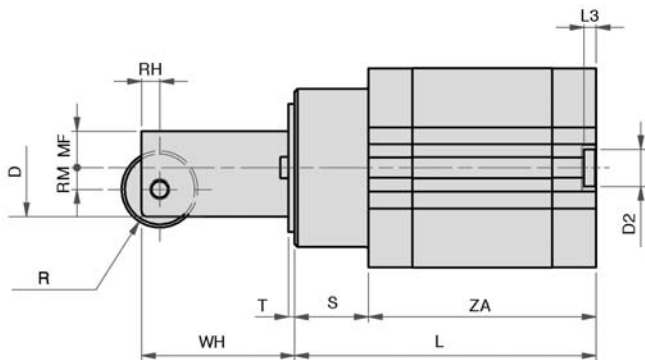
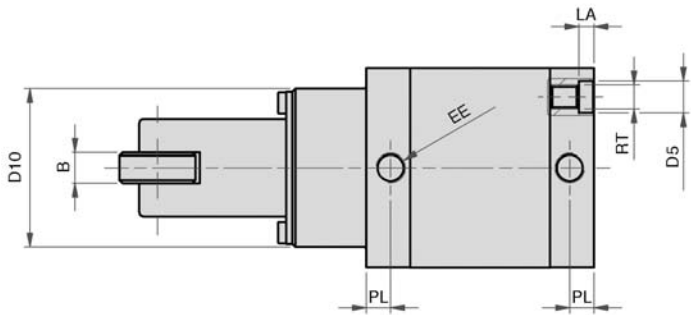
\varnothing 20



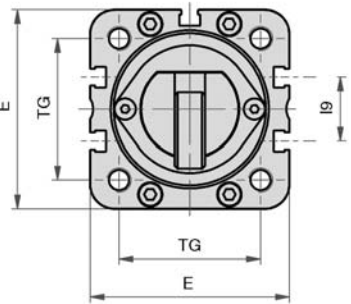
\varnothing 32



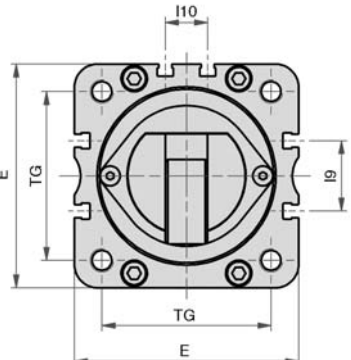
\varnothing 50 + \varnothing 80



\varnothing 50



\varnothing 80



* The cylinder of \varnothing 20 have three sensor grooves. The cylinders of \varnothing 32 and \varnothing 50 mm have five sensor grooves. The cylinder of \varnothing 80 mm have six sensor grooves.

\varnothing	B	\varnothing D	\varnothing D2	\varnothing D5	\varnothing D10	E	EE	I9	I10	L	LA	L3	MF	PL	PL1	R	RH	RM	RT	S	T	TG	WH	ZA
020	4	12	9	7.5	26	36	M5	-	-	64.5	4.5	3	4.5	7.5	9	5	3	2	M5	11.5	2	22	24	53
032	8	20	9	9	38	49	G1/8	10.8	-	80.5	5	3	7.5	8	8	9	6	3.5	M6	16.5	2	32.5	38	64
050	10	32	12	10.5	52	65.5	G1/8	21	-	99.5	5	4	12	8	-	12.5	6	7	M8	24.5	2	46.5	50.5	75
080	18	50	12	13.5	76	95.5	G1/8	30	18	141	3	4	18	8	-	18	10	11	M10	15	3	72	63	126