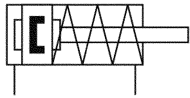
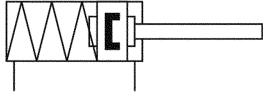


Pneumatic compact cylinders series NXE (Product discontinued)

Single acting with permanent magnet
M5 to G1/4 • piston Ø 12 to 100 mm



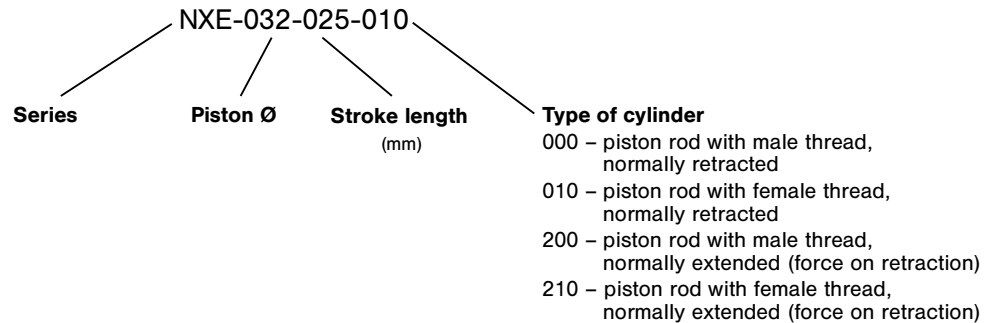
000, 010



200, 210



Order code



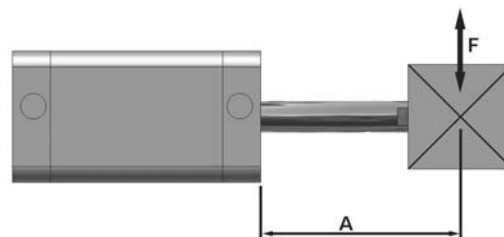
Design and function

Single acting cylinder with permanent magnet for proximity sensors and built-in cushioning rings. Cylinder end caps are connected to the Al-profile by mounting screws.

Order number Please complete according to order code.	NXE-012-...	NXE-016-...	NXE-020-...	NXE-025-...	NXE-032-...	NXE-040-...	NXE-050-...	NXE-063-...	NXE-080-...	NXE-100-...
Piston Ø (mm)	16	16	20	25	32	40	50	63	80	100
Connection	M5 (10/32 UNF)				G1/8	G1/8	G1/8	G1/8	G1/8	G1/4
Female thread	M3	M4	M5 (10/32 UNF)		M6	M6	M8	M8	M10	M12
Male thread	M6	M8	M10 x 1.25	M10 x 1.25	M10 x 1.25	M10 x 1.25	M12 x 1.25	M12 x 1.25	M16 x 1.5	M20 x 1.5
Operating pressure	2 ... 10 bar (29 ... 145 psi)						1 ... 10 bar (14.5 ... 145 psi)			
Temperature range	- 30 °C ... + 80 °C (- 22 °F ... + 176 °F)									
Medium	Compressed air in accordance with ISO 8573-1:2001, Class 7 4 – and free of aggressive additives									
Standard stroke lengths (mm)	5, 10, 15, 20, 25				The types 000 and 010 are also available in the stroke lengths of 30, 35, 40 and 50 mm. This will increase dimension U from stroke 35 mm.					
Materials	Cylinder tube: Al (anodized) End caps: Al (anodized) Piston rod: stainless steel Seals: PU									

9

Permissible side load (N)



Piston Ø	Distance A (mm)									
	≤ 25	30	40	50	60	70	80	90	100	125
12 + 16	8	7	6	6	5	5	4	3	2	-
20 + 25	12	11	9	7	6	5	4	3	3	-
32 + 40	23	20	16	12	10	8	7	7	6	4
50 + 63	38	34	28	22	18	15	13	12	11	3
80	49	43	35	28	24	20	18	17	16	12
100	93	82	67	55	46	40	37	34	31	23

Pneumatic compact cylinders series NXE (Product discontinued)

Single acting with permanent magnet

M5 to G1/4 · piston Ø 12 to 100 mm



Force at 6 bar in N for series NXE

Retraction type 000 and 010 as well as extension type 200 and 210 (spring force)

Piston Ø	stroke 5		stroke 10		stroke 15		stroke 20		stroke 25		stroke 30		stroke 40		stroke 50	
	min.	max.	min.	max.	min.	max.	min.	max.	min.	max.	min.	max.	min.	max.	min.	max.
12	26	28	23	28	21	28	19	28	17	28	13	28	19	28	17	28
16	26	28	23	28	21	28	19	28	17	28	13	28	19	28	17	28
20	34	37	31	37	28	37	25	37	22	37	19	37	25	37	22	37
25	38	41	35	41	32	41	29	41	26	41	23	41	29	41	26	41
32	48	52	45	52	41	52	38	52	34	52	30	52	37	52	34	52
40	63	68	58	68	53	68	48	68	43	68	38	68	48	68	43	68
50	63	68	58	68	52	68	47	68	42	68	36	68	47	68	42	68
63	89	95	83	95	77	95	71	95	65	95	59	95	71	95	65	95
80	140	147	134	147	128	147	121	147	115	147	109	147	121	147	115	147
100	200	210	190	210	180	210	170	210	160	210	150	210	170	210	160	210

Extension force for type 000 and 010

Piston Ø	stroke 5		stroke 10		stroke 15		stroke 20		stroke 25		stroke 30		stroke 40		stroke 50	
	min.	max.	min.	max.	min.	max.	min.	max.	min.	max.	min.	max.	min.	max.	min.	max.
12	81	83	81	86	81	88	81	90	81	92	81	96	81	90	81	92
16	81	83	81	86	81	88	81	90	81	92	81	96	81	90	81	92
20	133	136	133	139	133	142	133	145	133	148	133	151	133	145	133	148
25	224	227	224	230	224	233	224	236	224	239	224	242	224	236	224	239
32	382	386	382	389	382	393	382	397	382	400	382	404	382	397	382	400
40	611	616	611	621	611	626	611	631	611	636	611	641	611	631	611	636
50	992	997	992	1003	992	1008	992	1013	992	1018	992	1024	992	1013	992	1018
63	1588	1594	1588	1600	1588	1606	1588	1612	1588	1618	1588	1624	1588	1612	1588	1618
80	2568	2574	2568	2580	2568	2586	2568	2593	2568	2599	2568	2605	2568	2593	2568	2599
100	4031	4041	4031	4051	4031	4061	4031	4071	4031	4081	4031	4091	4031	4071	4031	4081

Retraction type 200 and 210

Piston Ø	stroke 5		stroke 10		stroke 15		stroke 20		stroke 25	
	min.	max.	min.	max.	min.	max.	min.	max.	min.	max.
12	53	55	53	58	53	60	53	62	53	64
16	53	55	53	58	53	60	53	62	53	64
20	90	93	90	96	90	99	90	102	90	105
25	182	185	182	188	182	191	182	194	182	197
32	321	325	321	328	321	332	321	336	321	339
40	549	554	549	559	549	564	549	569	549	574
50	884	889	884	895	884	900	884	905	884	910
63	1480	1486	1480	1492	1480	1498	1480	1504	1480	1510
80	2399	2405	2399	2411	2399	2417	2399	2424	2399	2430
100	3766	3776	3766	3786	3766	3796	3766	3806	3766	3816

Pressure 6 bar. The internal friction is considered.

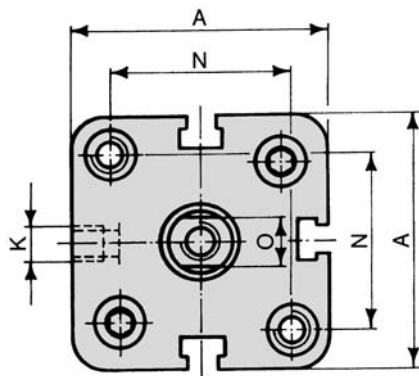
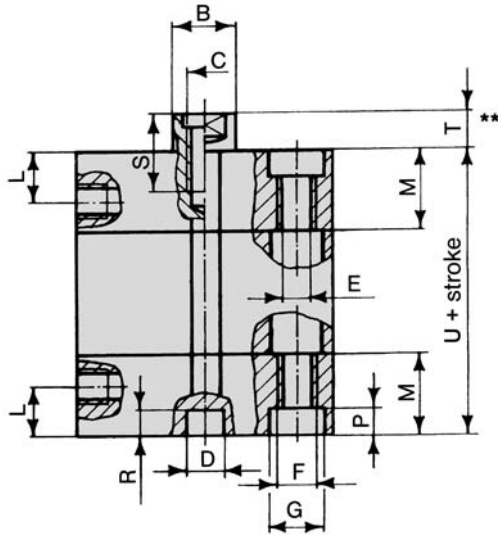
Pneumatic compact cylinders series NXE (Product discontinued)

Single acting, female thread
M5 to G1/4 • piston Ø 12 to 100 mm

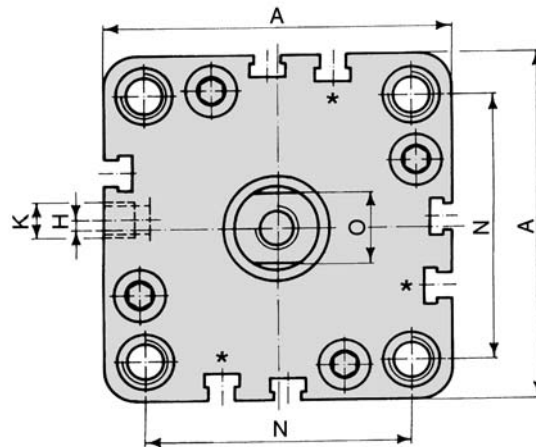
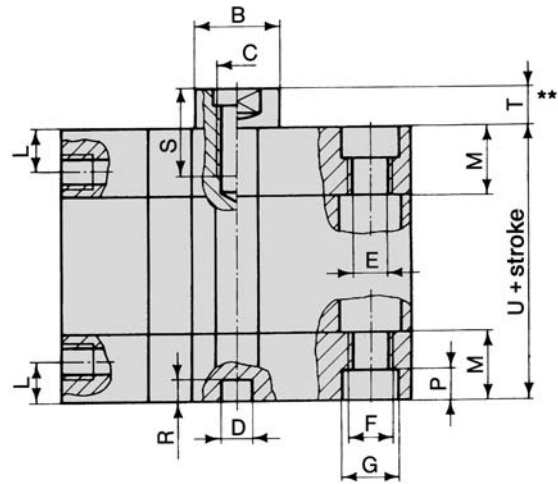


Series NXE (Type for order code: -010 and -210)

Ø 12 – 25



Ø 32 – 100



* The cylinders of Ø 32 mm and Ø 40 mm have three sensor grooves.

** Dimension T plus stroke length for type 210 (extended position).

U*** at stroke 35, 40 and 50.

Piston Ø	A	Ø B	C	Ø D	Ø E	F	Ø G	H	K	L	M	N	O	P	R	S	T**	U	U***
12	29	8	M3	6	3.3	M4	6	0	M5	8	12.25	18	5	3.5	4	6	4.5	38	48
16	29	8	M4	6	3.3	M4	6	0	M5	8	12.25	18	6	3.5	4	8	4.5	38	48
20	36	10	M5	6	4.2	M5	7.5	0	M5	8	12.25	22	8	4.5	4	10	4.5	38	48
25	40	10	M5	6	4.2	M5	7.5	0	M5	8	12.75	26	8	4.5	4	10	5.5	39.5	59.5
32	50	12	M6	6	5.2	M6	9	4	G1/8	8	14.5	32	10	5.5	4	12	6	44.5	64.5
40	58	12	M6	6	5.2	M6	9	3	G1/8	8	14.75	42	10	5.5	4	12	6.5	45.5	65.5
50	67	16	M8	6	6.7	M8	10.5	0	G1/8	8	14.75	50	13	6.5	4	12	7.5	45.5	65.5
63	80	16	M8	8	8.5	M10	13.5	0	G1/8	8	14.25	62	13	8.5	4	14	7.5	50	70
80	100	20	M10	8	8.5	M10	13.5	0	G1/8	8.5	16	82	17	8.5	4	15	8	56	86
100	124	25	M12	8	8.5	M10	13.5	0	G1/4	10.5	19.25	103	22	8.5	4	20	10	66.5	96.5

Piston Ø	12	16	20	25	32	40	50	63	80	100
Mass at 0 mm stroke in kg	0.074	0.074	0.121	0.139	0.261	0.362	0.481	0.755	1.402	2.560
lbs.	(0.163)	(0.163)	(0.267)	(0.306)	(0.575)	(0.798)	(1.060)	(1.664)	(3.091)	(5.644)
add-on per 100 mm stroke	0.170	0.170	0.270	0.310	0.410	0.500	0.630	0.780	1.180	1.600
	(0.375)	(0.375)	(0.595)	(0.683)	(0.904)	(1.102)	(1.389)	(1.719)	(2.601)	(3.527)

Pneumatic compact cylinders series NXE (Product discontinued)

Single acting, male thread

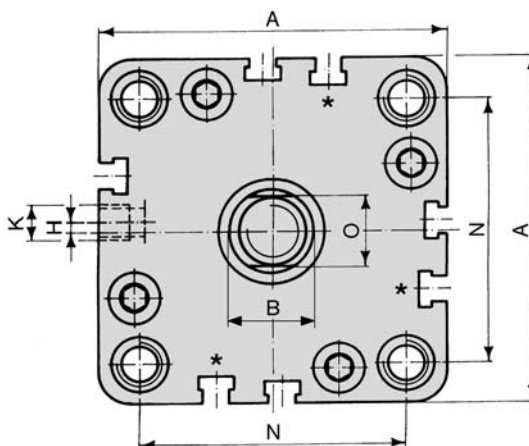
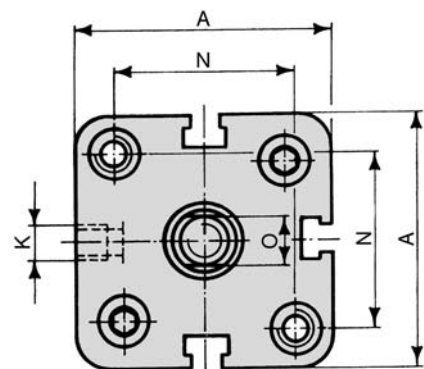
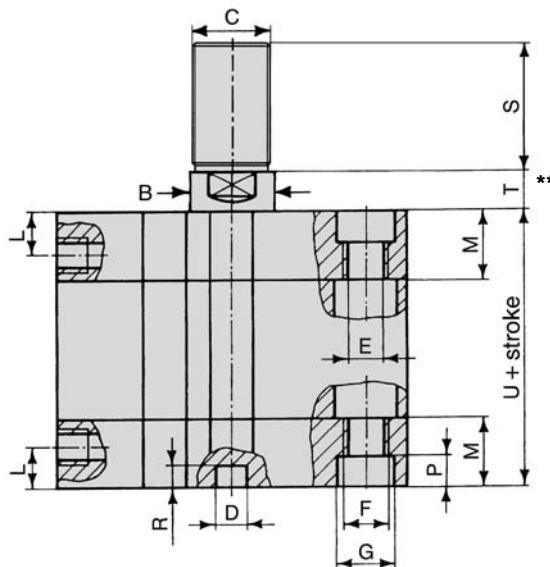
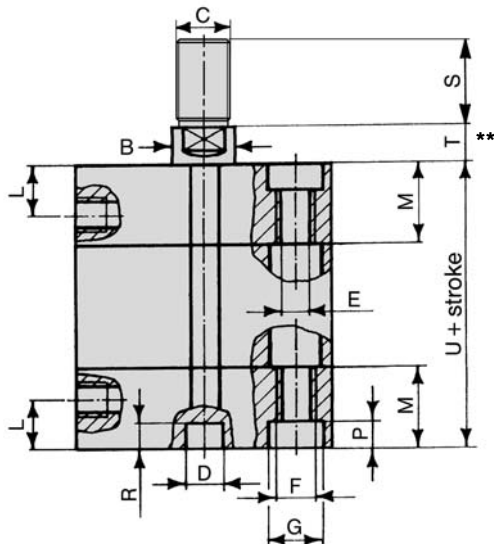
M5 to G1/4 • piston Ø 12 to 100 mm



Series NXE (Type for order code: -000 and -200)

Ø 32 – 100

Ø 12 – 25



* The cylinders of Ø 32 mm and Ø 40 mm have three sensor grooves.

** Dimension T plus stroke length for type 200 (extended position).

U*** at stroke 35, 40 and 50.

Piston Ø	A	Ø B	C	Ø D	Ø E	F	Ø G	H	K	L	M	N	O	P	R	S	T**	U	U***
12	29	8	M6	6	3.3	M4	6	0	M5	8	12.25	18	5	3.5	4	16	4.5	38	48
16	29	8	M8	6	3.3	M4	6	0	M5	8	12.25	18	6	3.5	4	20	4.5	38	48
20	36	10	M10 x 1.25	6	4.2	M5	7.5	0	M5	8	12.25	22	8	4.5	4	22	4.5	38	48
25	40	10	M10 x 1.25	6	4.2	M5	7.5	0	M5	8	12.75	26	8	4.5	4	22	5.5	39.5	59.5
32	50	12	M10 x 1.25	6	5.2	M6	9	4	G1/8	8	14.5	32	10	5.5	4	22	6	44.5	64.5
40	58	12	M10 x 1.25	6	5.2	M6	9	3	G1/8	8	14.75	42	10	5.5	4	22	6.5	45.5	65.5
50	67	16	M12 x 1.25	6	6.7	M8	10.5	0	G1/8	8	14.75	50	13	6.5	4	24	7.5	45.5	65.5
63	80	16	M12 x 1.25	8	8.5	M10	13.5	0	G1/8	8	14.25	62	13	8.5	4	24	7.5	50	70
80	100	20	M16 x 1.5	8	8.5	M10	13.5	0	G1/8	8.5	16	82	17	8.5	4	32	8	56	86
100	124	25	M20 x 1.5	8	8.5	M10	13.5	0	G1/4	10.5	19.25	103	22	8.5	4	40	10	66.5	96.5

Piston Ø	12	16	20	25	32	40	50	63	80	100
Mass at 0 mm stroke in kg	0.078	0.082	0.135	0.153	0.275	0.376	0.502	0.776	1.453	2.659
lbs.	(0.172)	(0.181)	(0.298)	(0.337)	(0.606)	(0.829)	(1.107)	(1.711)	(3.203)	(5.862)
add-on per 100 mm stroke	0.170	0.170	0.270	0.310	0.410	0.500	0.630	0.780	1.180	1.600
	(0.375)	(0.375)	(0.595)	(0.683)	(0.904)	(1.102)	(1.389)	(1.719)	(2.601)	(3.527)

Note:
Accessories for piston rod see page 9.211.

Mounting accessories



Foot mount
NXB-Ø-01
Page 9.129



Flange mount
NXB-Ø-02
Page 9.128



Swivel mount 90°
XLB-Ø-06
Page 9.017



Clevis pin
XLB-Ø-08
Page 9.017



Swivel mount
NXB-Ø-04
Page 9.129



Clevis mount
NXB-Ø-03
Page 9.129



Clevis mount
RC-Ø
Page 9.084

Proximity sensors



Sensors
ZS-
Page 9.220



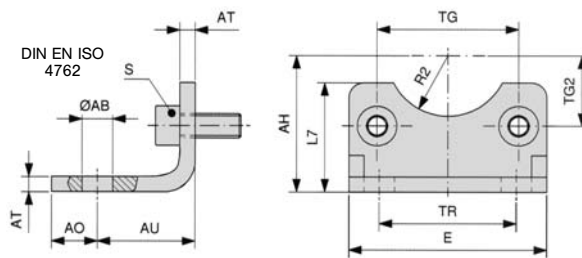
Connecting cable
KA-
Page 9.221

Piston Ø	Foot mount	Flange mount	Clevis mount	Swivel mount	Clevis mount	Swivel mount 90°	Clevis pin	Sensors	Cable
NX-12	-	NXB-16-02	-	NXB-16-04	RC-16	-	-	ZS-5600 ZS-5601 ZS-5700 ZS-5700-10 ZS-5701 ZS-6700 ZS-6701 ZS-7300 ZS-7302	KA-30 KA-50 KA-51 KA-100 KA-101
NX-16	-	NXB-16-02	-	NXB-16-04	RC-16	-	-		
NX-20	-	NXB-20-02	-	NXB-20-04	RC-30	-	-		
NX-25	-	NXB-25-02	-	NXB-25-04	RC-30	-	-		
NX-32	NXB-32-01	NXB-32-02	NXB-32-03	-	-	XLB-32-06	XLB-32-08		
NX-40	NXB-40-01	NXB-40-02	NXB-40-03	-	-	XLB-40-06	XLB-40-08		
NX-50	NXB-50-01	NXB-50-02	NXB-50-03	-	-	XLB-50-06	XLB-50-08		
NX-63	NXB-63-01	NXB-63-02	NXB-63-03	-	-	XLB-63-06	XLB-63-08		
NX-80	NXB-80-01	NXB-80-02	NXB-80-03	-	-	XLB-80-06	XLB-80-08		
NX-100	NXB-100-01	NXB-100-02	NXB-100-03	-	-	XLB-100-06	XLB-100-08		

Mounting accessories for series XL



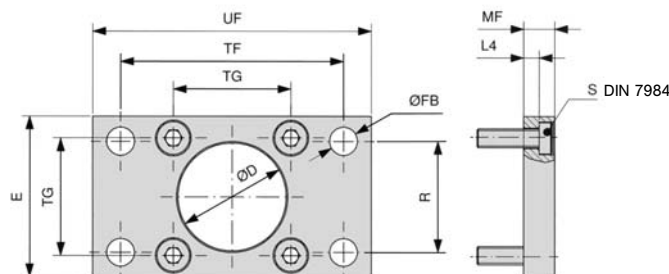
Foot mount 1 pair



Material: steel (zinc-plated)

Order number	Ø AB	AH	AO	AU	AT	E	L7	R2	S	TG	TG2	TR
XLB-032-01	7	32	11	24	4	45	30	15	M6 x 20	32.5	16.25	32
XLB-040-01	10	36	8	28	4	52	30	17.5	M6 x 20	38	19	36
XLB-050-01	10	45	15	32	5	65	36	20	M8 x 20	46.5	23.25	45
XLB-063-01	10	50	13	32	5	75	35	22.5	M8 x 20	56.5	28.25	50
XLB-080-01	12	63	14	41	6	95	47	22.5	M10 x 20	72	36	63
XLB-100-01	14.5	71	16	41	6	115	53	27.5	M10 x 20	89	44.5	75
XLB-125-01	16.5	90	25	45	8	140	70	30	M12 x 25	110*	55	90
	H14	JS16		± 0,2				H15		± 0,2 *± 0,3		JS14

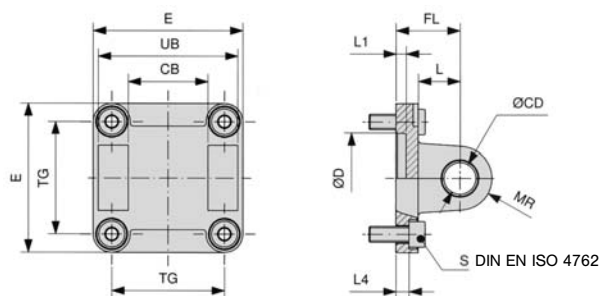
Flange mount



Material: steel (zinc-plated)

Order number	Ø D	E	Ø FB	L4	MF	R	S	TF	TG	UF
XLB-032-02	30	45	7	5	10	32	M6 x 20	64	32.5	80
XLB-040-02	35	52	9	5	10	36	M6 x 20	72	38	90
XLB-050-02	40	65	9	6.5	12	45	M8 x 20	90	46.5	110
XLB-063-02	45	75	9	6.5	12	50	M8 x 20	100	56.5	120
XLB-080-02	45	95	12	9	16	63	M10 x 25	126	72	150
XLB-100-02	55	115	14	9	16	75	M10 x 25	150	89	170
XLB-125-02	60	140	16	10.5	20	90	M12 x 25	180	110*	205
	H11		H13	- 0,5	JS14	JS14		JS14	± 0,2 *± 0,3	

Clevis mount with bushing



Order number **XLB-xxx-48**
includes the mounting pin.

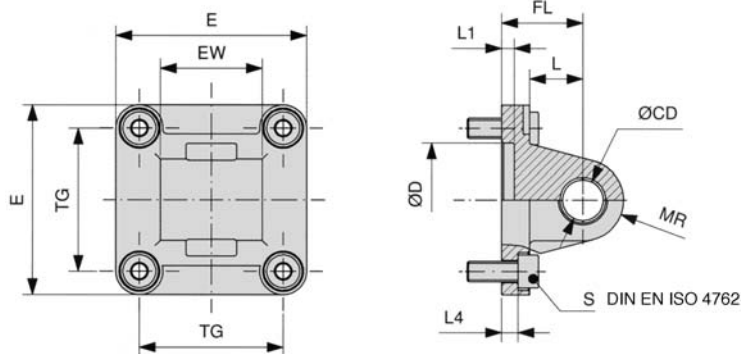
Material: Al

Order number	CB	Ø CD	Ø D	E	FL	L	L1	L4	MR	S	TG	UB
XLB-032-04	26	10	30	45	22	13	5	5.5	10	M6 x 20	32.5	45
XLB-040-04	28	12	35	52	25	16	5	5.5	12	M6 x 20	38	52
XLB-050-04	32	12	40	65	27	16	5	6.5	12	M8 x 20	46.5	60
XLB-063-04	40	16	45	75	32	21	5	6.5	16	M8 x 20	56.5	70
XLB-080-04	50	16	45	95	36	22	5	10	16	M10 x 25	72	90
XLB-100-04	60	20	55	115	41	27	5	10	20	M10 x 25	89	110
XLB-125-04	70	25	60	140	50	30	7	10	25	M12 x 25	110*	130
	H14	H9	H11		± 0,2			± 0,5			± 0,2 *± 0,3	h13

Mounting accessories for series XL



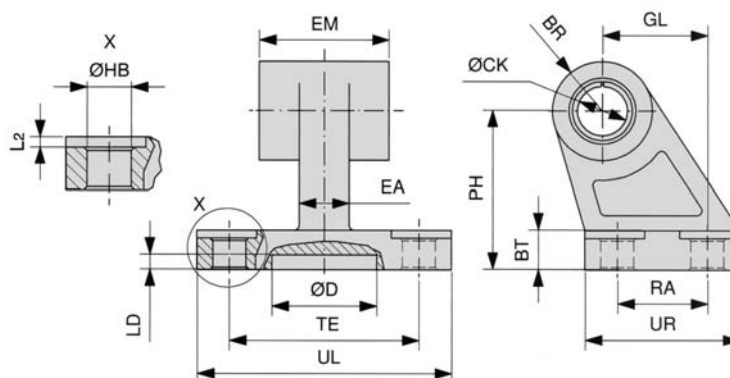
Swivel mount



Material: Al

Order number	Ø CD	Ø D	E	EW	FL	L	L1	L4	MR	S	TG
XLB-032-05	10	30	45	26	22	13	5	5.5	10	M6 x 20	32.5
XLB-040-05	12	35	52	28	25	16	5	5.5	12	M6 x 20	38
XLB-050-05	12	40	65	32	27	16	5	6.5	12	M8 x 20	46.5
XLB-063-05	16	45	75	40	32	21	5	6.5	16	M8 x 20	56.5
XLB-080-05	16	45	95	50	36	22	5	10	16	M10 x 25	72
XLB-100-05	20	55	115	60	41	27	5	10	20	M10 x 25	89
XLB-125-05	25	60	140	70	50	30	7	10	25	M12 x 25	110*
	H9	H11			± 0.2			± 0.5			± 0.2 *± 0.3

Swivel mount 90°



Material: Al

Order number	BR	BT	Ø CK	Ø D	EA	EM	GL	Ø HB	L2	LD	PH	RA	TE	UL	UR
XLB-032-06	10	8	10	21	10	26	21	6.6	1.6	3	32	18	38	51	31
XLB-040-06	11	10	12	21	15	28	24	6.6	1.6	3	36	22	41	54	35
XLB-050-06	13	12	12	21	16	32	33	9	1.6	3	45	30	50	65	45
XLB-063-06	15	14	16	21	16	40	37	9	1.6	3	50	35	52	67	50
XLB-080-06	15	14	16	21	20	50	47	11	2.5	3	63	40	66	86	60
XLB-100-06	19	17	20	11	20	60	55	11	2.5	3	71	50	76	96	70
XLB-125-06	22.5	20	25	21	30	70	70	14	3.2	3	90	60	94	124	90
			H9				JS14	H13			JS15	JS14	JS14		

Clevis pin



Order number	A	Ø B	Ø EK	EL	LB
XLB-032-08	53	9.6	10	46	1.1
XLB-040-08	60	11.5	12	53	1.1
XLB-050-08	68	11.5	12	61	1.1
XLB-063-08	78	15.2	16	71	1.1
XLB-080-08	98	15.2	16	91	1.1
XLB-100-08	118	19	20	111	1.3
XLB-125-08	139	23.9	25	132*	1.3
		e8		+ 2 *+ 3	

Material: steel (zinc-plated)
Snap rings are included.

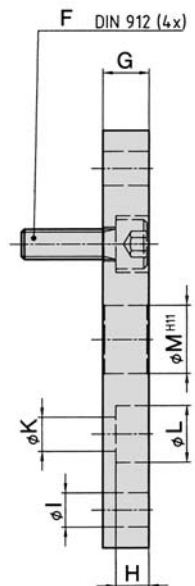
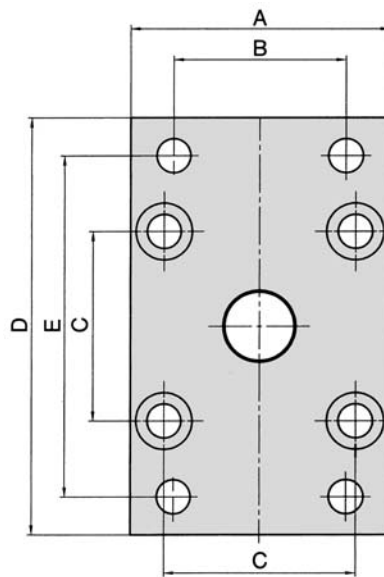
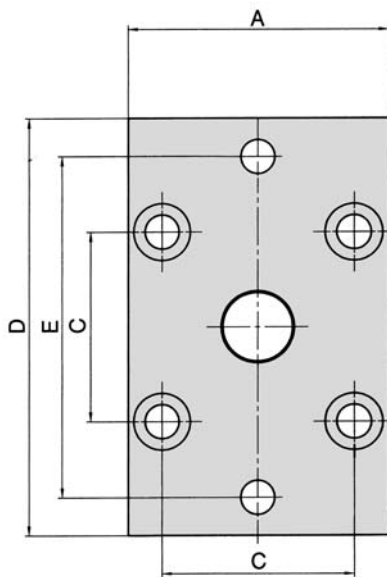
Cylinder attachments	NXB-Ø-01	Foot mount	Page 9.129	Remark: Seal kits Piston rod accessories	see page 9.130 see page 9.211
	NXB-Ø-02	Flange mount	Page 9.128		
	NXB-Ø-03	Clevis mount	Page 9.129		
	NXB-Ø-04	Swivel mount	Page 9.129		
	XLB-Ø-06	Swivel mount 90°	Page 9.017		
	XLB-Ø-08	Clevis pin	Page 9.017		
Proximity sensors	RC-Ø	Clevis mount	Page 9.084		
	ZS-...	Sensors	Page 9.220		
	KA-...	Connecting cable	Page 9.221		

Piston Ø	Foot-mount	Flange-mount	Clevis mount	Swivel mount	Clevis mount 90°	Swivel mount 90°	Clevis pin	Sensors	Cable
NX-12	-	NXB-16-02	-	NXB-16-04	RC-16	-	-	ZS-5600	
NX-16	-	NXB-16-02	-	NXB-16-04	RC-16	-	-	ZS-5601	
NX-20	-	NXB-20-02	-	NXB-20-04	RC-30	-	-	ZS-5700	KA-30
NX-25	-	NXB-25-02	-	NXB-25-04	RC-30	-	-	ZS-5700-10	KA-50
NX-32	NXB-32-01	NXB-32-02	NXB-32-03	-	-	XLB-32-06	XLB-32-08	ZS-5701	KA-51
NX-40	NXB-40-01	NXB-40-02	NXB-40-03	-	-	XLB-40-06	XLB-40-08	ZS-6700	KA-100
NX-50	NXB-50-01	NXB-50-02	NXB-50-03	-	-	XLB-50-06	XLB-50-08	ZS-6701	KA-101
NX-63	NXB-63-01	NXB-63-02	NXB-63-03	-	-	XLB-63-06	XLB-63-08	ZS-7300	
NX-80	NXB-80-01	NXB-80-02	NXB-80-03	-	-	XLB-80-06	XLB-80-08	ZS-7302	
NX-100	NXB-100-01	NXB-100-02	NXB-100-03	-	-	XLB-100-06	XLB-100-08		

Flange mount

Ø 12 – 25

Ø 32 – 100



Material: steel (zinc-plated)

Order number	A	B	C	D	E	F	G	H	I	K	L	M
NXB-016-02	29	-	18	55	43	M4 x 16	10	5.4	5.5	4.5	9	10
NXB-020-02	36	-	22	70	55	M5 x 20	10	5.4	6.6	5.5	10	12
NXB-025-02	40	-	26	76	60	M5 x 20	10	5.4	6.6	5.5	10	12
NXB-032-02	50	32	32	80	65	M6 x 20	10	6.4	7	6.6	11	14
NXB-040-02	60	36	42	102	82	M6 x 20	10	6.4	9	6.6	11	14
NXB-050-02	68	45	50	110	90	M8 x 25	12	8.6	9	9	15	18
NXB-063-02	87	50	62	130	110	M10 x 25	15	10.6	9	11	18	18
NXB-080-02	107	63	82	160	135	M10 x 25	15	10.6	12	11	18	23
NXB-100-02	128	75	103	190	163	M10 x 30	15	10.6	14	11	18	28

(Product discontinued)

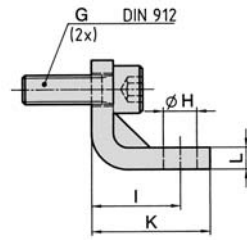
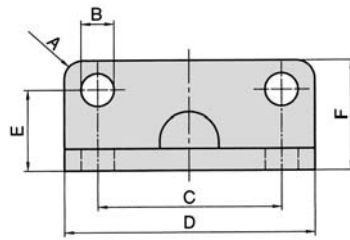
Accessories for compact cylinders series NXD and NXE

M5 to G1/4 • piston Ø 12 to 100 mm



Foot mount

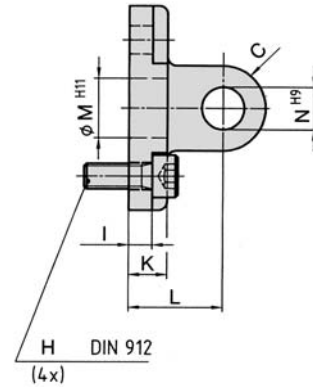
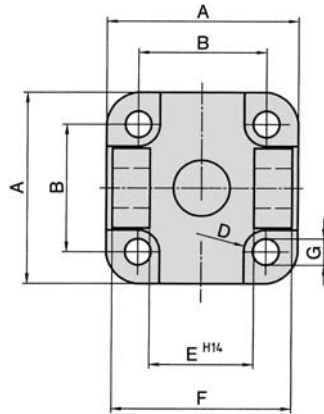
1 pair



Material: steel (zinc-plated)

Order number	A	B	C	D	E	F	G	H	I	K	L
NXB-032-01	R 2	6.6	32	50	16	24	M6 x 20	6.6	18	26	5
NXB-040-01	R 5	6.6	42	60	21.5	29.5	M6 x 20	9	20	28	5
NXB-050-01	R 5	9	50	68	22	30	M8 x 25	9	24	32	6
NXB-063-01	R 5	11	62	84	28.5	39	M10 x 25	11	27	39	6
NXB-080-01	R 5	11	82	102	24.5	36.5	M10 x 25	11	30	42	8
NXB-100-01	R 5	11	103	123	26.5	38.5	M10 x 30	13.5	33	45	8

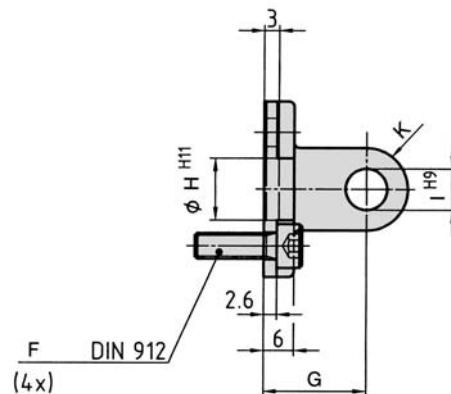
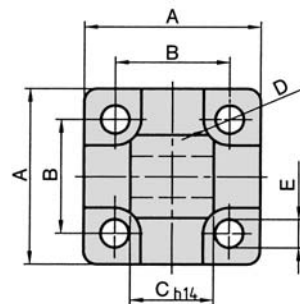
Clevis mount



Material: Al

Order number	A	B	C	D	E	F	G	H	I	K	L	M	N
NXB-032-03	48	32	10	R 5.5	26	45	6.6	M6 x 16	5.5	9	22	14	10
NXB-040-03	58	42	12.5	R 5.5	28	52	6.6	M6 x 16	5.5	9	25	14	12
NXB-050-03	66	50	12.5	R 7.5	32	60	9	M8 x 20	6.5	11	27	18	12
NXB-063-03	83	62	15	R 9	40	70	11	M10 x 25	6.5	11	32	18	16
NXB-080-03	102	82	15	R 9	50	90	11	M10 x 30	10	13	36	23	16
NXB-100-03	123	103	20	R 9	60	110	11	M10 x 30	10	15	41	28	20

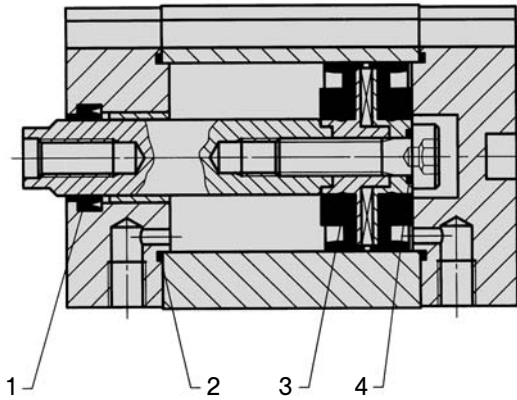
Swivel mount



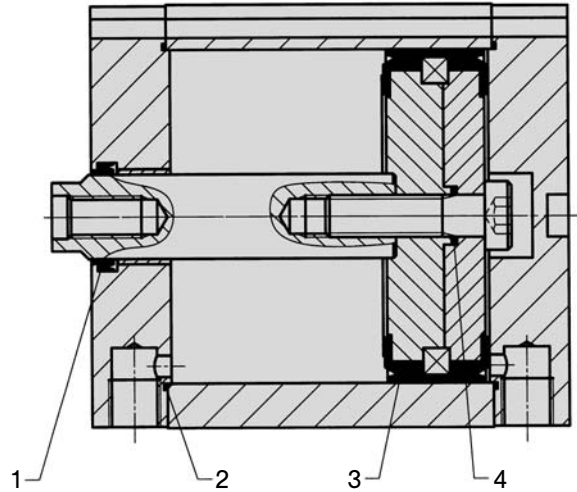
Material: Al

Order number	A	B	C	D	E	F	G	H	I	K
NXB-016-04	27	18	12	R 4.5	4.5	M4 x 12	16	10	6	6
NXB-020-04	34	22	16	R 5	5.5	M5 x 16	20	12	8	8
NXB-025-04	38	26	16	R 5	5.5	M5 x 16	20	12	8	8

Piston Ø 12 – 25 mm



Piston Ø 32 – 100 mm



For NXD cylinder types 200, 210 and 220 and all NXE types

Seal kit

Order number	Piston Ø
VS-NXD-012-01	12 mm
VS-NXD-016-01	16 mm
VS-NXD-020-01	20 mm
VS-NXD-025-01	25 mm
VS-NXD-032-01	32 mm
VS-NXD-040-01	40 mm
VS-NXD-050-01	50 mm
VS-NXD-063-01	63 mm
VS-NXD-080-01	80 mm
VS-NXD-100-01	100 mm

Content

Pos.	Part	Quantity
1	Wiper and seal element	1
2	O-ring	2
3	Piston	2
4	O-ring	1
	Grease	1

For NXD cylinder types 600 and 610

Seal kit

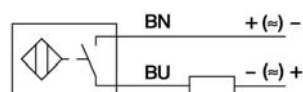
Order number	Piston Ø
VS-NXD-012-02	12 mm
VS-NXD-016-02	16 mm
VS-NXD-020-02	20 mm
VS-NXD-025-02	25 mm
VS-NXD-032-02	32 mm
VS-NXD-040-02	40 mm
VS-NXD-050-02	50 mm
VS-NXD-063-02	63 mm
VS-NXD-080-02	80 mm
VS-NXD-100-02	100 mm

Content

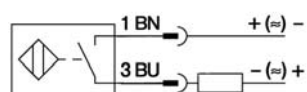
Pos.	Part	Quantity
1	Wiper and seal element	2
2	O-ring	2
3	Piston	2
4	O-ring	1
	Grease	1

Proximity sensors

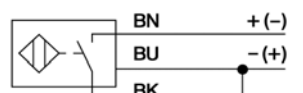
Wiring diagram



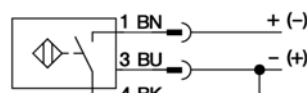
Reed
ZS-5600



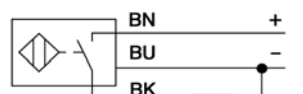
Reed
ZS-5601



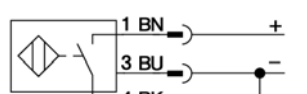
Reed
ZS-5700, ZS-5700-10



Reed
ZS-5701

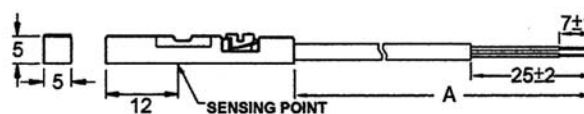


PNP
ZS-6700, ZS-7300



PNP
ZS-6701, ZS-7302 (dimensions for ZS-7302, page 9.221)

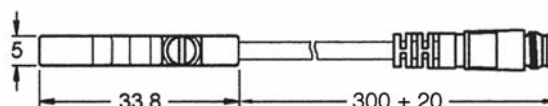
Dimensions



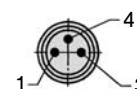
ZS-5600, ZS-6700, ZS-7300; A = 3.000 ± 20

ZS-5700; A = 5.000 ± 20

ZS-5700-10; A = 10.000 ± 20



ZS-5601, ZS-5701, ZS-6701



Function principles

Magnetic field sensors are actuated by magnetic fields and are especially suited for piston position detection in pneumatic cylinders. Based on the fact that magnetic fields can permeate non-magnetizable metals, it is possible to detect a permanent magnet attached to the piston through the aluminum wall of the cylinder.

Mounting tip

The sensor is firmly fixed in the groove by clockwise rotation of the screw.

Proximity sensors Reed contact



Order number	ZS-5600	ZS-5601	ZS-5700	ZS-5700-10	ZS-5701
Design	2-pole Reed sensor (non-polarized) normally open		3-pole Reed sensor* normally open		
Cable	ø 2.8, PUR				
Cable cross section	n/a				
Cable length	3 m	0.3 m	5 m	10 m	0.3 m
Cable plug	-	M8	-	-	M8
Overtravel speed	n/a				
Max. absolute hysteresis	n/a				
Temperature drift	n/a				
min. absolute repeat accuracy	n/a				
Operating temperature	- 10 °C ... + 70 °C				
Degree of protection	IP 67				
Housing material	Plastic				
Switching status indication	LED red		LED yellow		
Rated operational voltage	5 ... 240 V AC/DC	5 ... 60 V AC/DC	5 ... 30 V DC		
Rated operational current I_E	3 ... 100 mA		≤ 500 mA		
DC	3 ... 100 mA		≤ 500 mA		
AC	3 ... 100 mA		≤ 500 mA		
Breaking capacity	≤ 10 W				
No-load current	n/a		≤ 10 mA		
Max. OFF-state current	0 mA				
Max. switching frequency	≤ 0.2 kHz				
Rated insulation voltage	n/a				
Short-circuit protection	no				
Max. voltage drop at I_E	≤ 2.5 V		≤ 0.1 V		
Wire breakage	no				
Reverse polarity protection	yes				
Vibration resistance	9 g (1.5 mm, 10 – 55 Hz – 10 Hz)				
Shock resistance	30 g (11 ms)				
Explosion proof	-				

* Useable as 2-wire contact, voltage 0 ... 30 V AC / 0 ... 30 V DC, LED has no function.

Proximity sensors

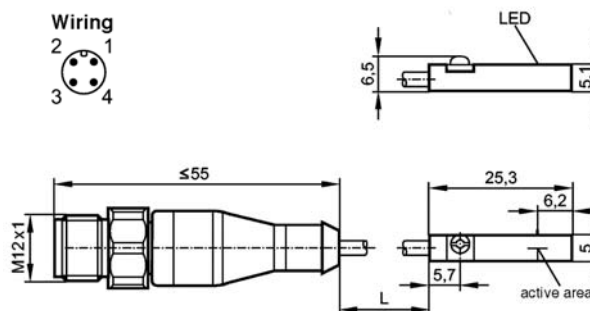
Mounting bracket for round cylinder Ø 8 – 63 mm



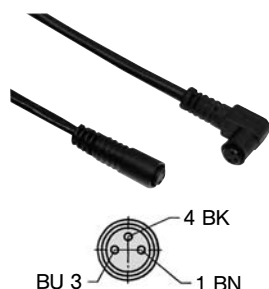
Material: metal,
plastic PA GI/6T

Order number	Piston Ø
NT-250	8 to 25 mm
NT-500	32 to 63 mm

Dimensions for ZS-7302



Connecting cable for ZS-5601, ZS-5701 and ZS-6701



Cable: PUR, black, 3 x 0.25 mm², Ø 3.9, high flexible
Operating voltage 0 ... 48 V AC/DC

Order number	Length of cable	Connection
KA-30	3 m	8 mm sensor snap-in, straight
KA-50	5 m	8 mm sensor snap-in, straight
KA-51	5 m	8 mm sensor snap-in, 90°
KA-100	10 m	8 mm sensor snap-in, straight
KA-101	10 m	8 mm sensor snap-in, 90°

Proximity sensors electronic

Order number	ZS-6700	ZS-6701	ZS-7300	ZS-7302
Design	electronic, magnet-induktive sensor, normally open PNP output			
Cable	Ø 2,8, PUR		n/a	
Cable cross section	n/a		3 x 0,14 mm ²	
Cable lengths	3 m	0,3 m	6 m	0,3 m
Cable plug	-	M8	-	M12
Overtravel speed	n/a		≤ 10 m/s	
Max. absolute hysteresis	n/a		n/a	
Temperatur drift	n/a		≤ 0,1 mm	
Min. absolute repeat accuracy	n/a		≤ 0,2 mm	
Operating temperature	- 10 °C ... + 70 °C		- 25 °C ... + 60 °C	
Degree of protection	IP 67		IP65/IP67	IP 67
Housing material	Plastic		Body: PA; Mounting band: stainless steel	
Switching status indication	LED green		LED yellow	
Rated operational voltage	5 ... 30 V DC		10 ... 30 V DC	
Rated operational current I_E	≤ 200 mA		≤ 100 mA	
Breaking capacity	6 W		n/a	
No-load current	≤ 10 mA		≤ 10 mA	
Max. OFF-state current	n/a		n/a	
Max. switching frequency	≤ 1 kHz		> 6.000 Hz	> 10.000 Hz
Rated insulation voltage	n/a		n/a	
Short-circuit protection	yes		yes	
Max. voltage drop at I_E	≤ 1,0 V		≤ 2,5 V	
Wire breakage	yes		n/a	
Reverse polarity protection	yes		yes	
Vibration resistance	9 g (1.5 mm, 10 – 55 Hz – 10 Hz)		n/a	
Shock resistance	50 g (11 ms)		n/a	
Explosion proof	-		EX II 3G Ex nA T4 X EX II 3D Ex tD A22 IP67 T125°C X	EX II 3D Ex tc IIIC T125°C Dc X