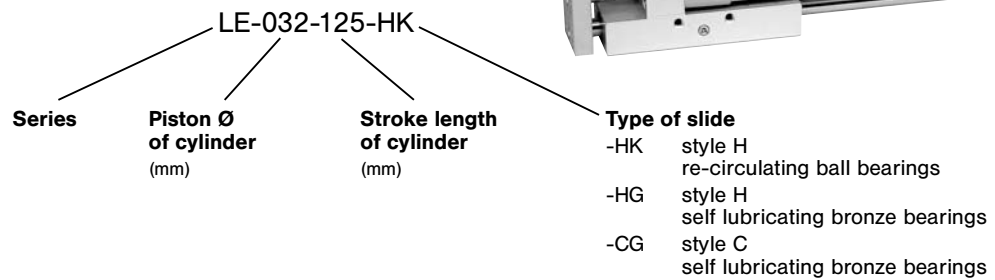


# Accessories for cylinders series HM and XL

## Linear guides series LE



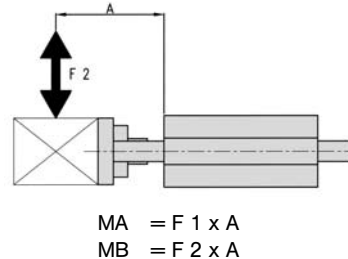
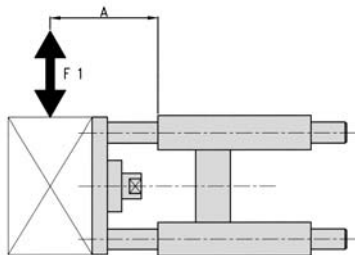
### Order code



### Design and function

Linear guide unit with re-circulating ball bearings or self-lubricating bronze bearing. Suitable for use with HM Ø 12 - 25 mm (ISO 6432) and XL Ø 32 - 100 mm (ISO 6431) series cylinders. Type CG is designed for low force applications and is only available up to Ø 63 mm. Cylinders must be ordered separately.

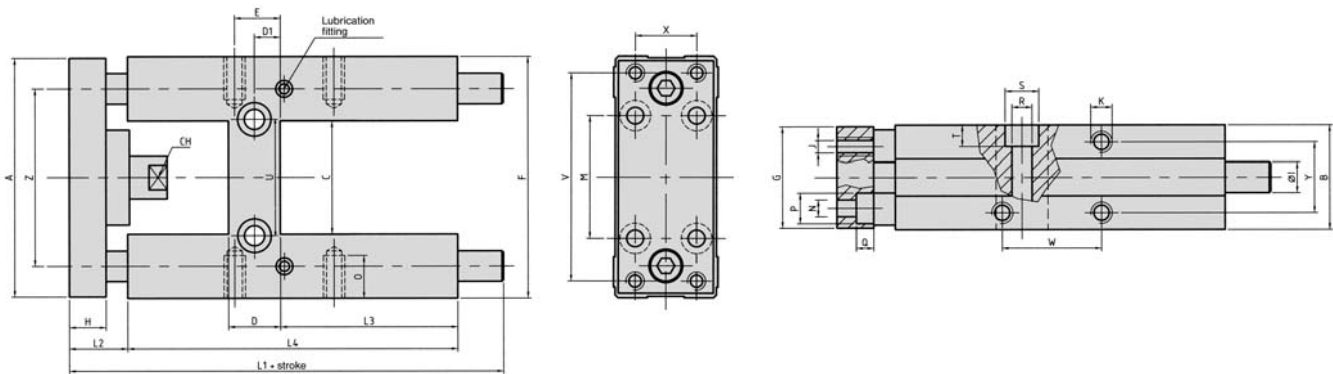
Order number Please complete according to order code.	LE-016-...	LE-025-...	LE-032-...	LE-040-...	LE-050-...	LE-063-...	LE-080-...	LE-100-...
<b>Cylinder-Ø</b>	12, 16	20, 25	32	40	50	63	80	100
<b>Cylinder series</b>	HM (ISO 6432)		XL (ISO 15552)					
<b>Temperature range</b>	- 30° C ... + 100° C (- 22 °F ... + 212 °F)							
<b>Max. stroke length</b>	1000 mm							
<b>Materials</b>	Body: Al (anodized), Guide rod: hard chrome plated steel, Shaft wiper: NBR, Bearing: steel (ball bearing) or sintered bronze							



Order number	max. load		mass of unit	
	MA (Nm)	MB (Nm)	0-stroke kg (lb.)	each 100 mm kg (lb.)
LE-016-STROKE-CG	6	5	0.3 (0.661)	0.12 (0.264)
LE-025-STROKE-CG	13	12	0.5 (1.102)	0.18 (0.397)
LE-032-STROKE-CG	13	12	0.8 (1.764)	0.18 (0.397)
LE-040-STROKE-CG	21	19	1.3 (2.866)	0.32 (0.705)
LE-050-STROKE-CG	21	19	2.3 (5.070)	0.5 (1.102)
LE-063-STROKE-CG	26	23	3.0 (6.614)	0.5 (1.102)
LE-016-STROKE-HG	6.5	5.8	0.4 (0.882)	0.12 (0.264)
LE-025-STROKE-HG	19	17	0.9 (1.984)	0.18 (0.397)
LE-032-STROKE-HG	20	18	1.29 (2.844)	0.18 (0.397)
LE-040-STROKE-HG	35	32	2.4 (5.291)	0.32 (0.705)
LE-050-STROKE-HG	50	45	3.5 (7.716)	0.5 (1.102)
LE-063-STROKE-HG	60	54	4.6 (10.141)	0.5 (1.102)
LE-080-STROKE-HG	72	65	8.4 (18.518)	0.77 (1.697)
LE-100-STROKE-HG	80	72	11.8 (26.014)	0.77 (1.697)
LE-016-STROKE-HK	9	8	0.36 (0.794)	0.08 (0.176)
LE-025-STROKE-HK	11	10	0.84 (1.852)	0.12 (0.264)
LE-032-STROKE-HK	16	14	1.2 (2.645)	0.18 (0.397)
LE-040-STROKE-HK	29	16	2.3 (5.070)	0.32 (0.705)
LE-050-STROKE-HK	42	38	3.4 (7.495)	0.5 (1.102)
LE-063-STROKE-HK	48	43	4.4 (9.700)	0.5 (1.102)
LE-080-STROKE-HK	60	54	8.2 (18.077)	0.77 (1.697)
LE-100-STROKE-HK	60	54	11.6 (25.573)	0.77 (1.697)

The moments "MA" and "MB" are calculated under dynamic conditions. Under static conditions, the values must be doubled.

**Series H for cyl.-Ø 12 – 25 mm**



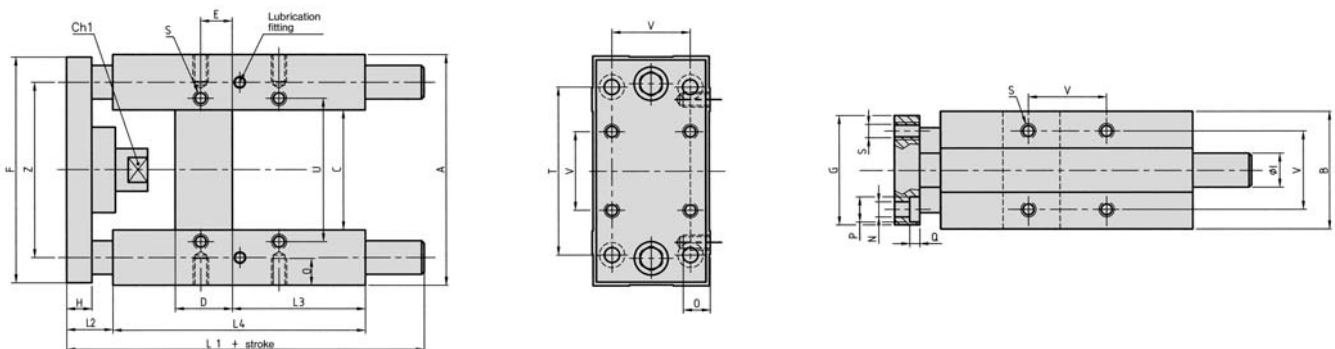
Only type HK (ball bearing) has a lubrication fitting.

Order number*	A	B	C	D	D1	E	F	G	H	Ø I**	J	K	L1	L2	L3	L4
LE-016-...	66	30	30	12	6	8	69	29	10	10**	M4	M4	123	32	46	68
LE-025-...	78	34	37	17	8.5	15	79	32	12	12**	M5	M6	165	15	58	108

Order number*	M	Ø N	O	Ø P	Q	Ø R	Ø S	T	U	V	W	X	Y	Z	CH
LE-016-...	32	4.5	6	8	6	5.5	9	5.5	24	58	18	18	22	49.5	8
LE-025-...	38	5.5	9	10	9	6.5	11	6.5	38	68	32.5	20	23	58	12

\* Please complete according to order code. \*\* The guide rod for the unit LE-016- with ball bearing is  $\varnothing$  8 mm, for LE-025- it is  $\varnothing$  10 mm.

**Series H for cyl.-Ø 32 – 100 mm**



Only type HK (ball bearing) has a lubrication fitting.

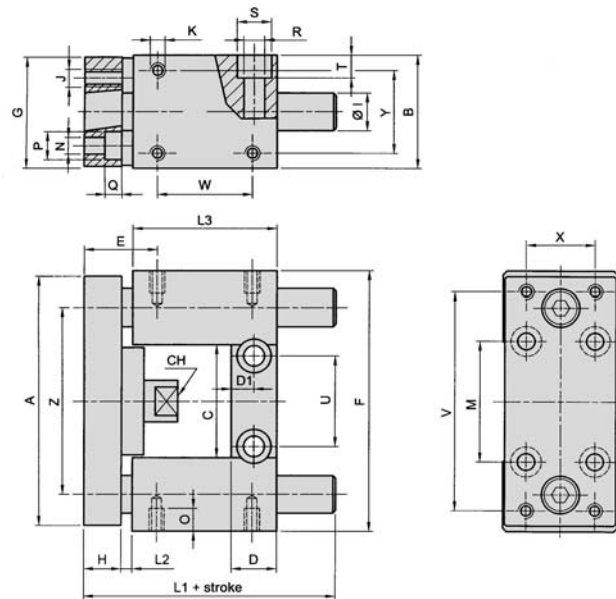
Order number*	A	B	C	D	E	F	G	H	Ø I	L1	L2
LE-032-...	97	49	51	24	4.3	93	45	12	12	187	20
LE-040-...	115	58	58.2	28	11	112	55	12	16	207	20
LE-050-...	137	70	70.2	34	18.8	134	65	15	20	223	19
LE-063-...	152	85	85.2	34	15.3	147	80	15	20	243**	19
LE-080-...	189	105	105.5	50	25	180	100	20	25	267	33
LE-100-...	213	130	130.5	55	30	206	120	20	25	290	33

Order number*	L3	L4	N	O	P	Q	S	T	U	V	Z	CH 1
LE-032-...	75	125	6.6	12	11	6.5	M6	78	61	32.5	74	15
LE-040-...	80	140	6.6	12	11	6.5	M6	84	69	38	87	15
LE-050-...	78	148	9	16	15	8.5	M8	100	85	46.5	104	20
LE-063-...	106	178	9	16	15	9	M8	105	100	56.5	119	20
LE-080-...	111	195	11	20	18	11	M10	130	130	72	148	26
LE-100-...	128	218	11	20	18	11	M10	150	150	89	173	26

\* Please complete according to order code.

\*\* Length for ball guide type (HK) is 225 mm.

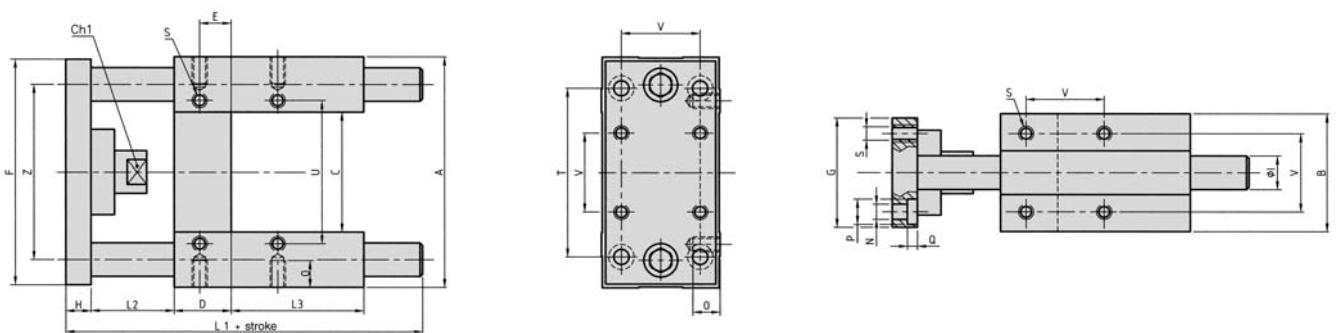
**Series C, for cyl.-Ø 12 – 25 mm**



Order number*	A	B	C	D	D1	E	F	G	H	Ø I	J	K	L1	L2	L3
LE-016-...	66	30	30	12	6	19.5	69	29	10	10	M4	M4	66.5	3	38
LE-025-...	78	34	37	17	8.5	21.75	79	32	12	12	M5	M6	83	3	48

Order number*	M	Ø N	O	Ø P	Q	Ø R	Ø S	T	U	V	W	X	Y	Z	CH
LE-016-...	32	4.5	6	7.5	4.5	5.5	9	6	24	58	25	18	22	49.5	8
LE-025-...	38	5.5	9	10	7.5	6.5	11	7	38	68	32.5	20	23	58	12

**Series C for cyl.-Ø 32 – 63 mm**



Order number*	A	B	C	D	E	F	G	H	Ø I	L1	L2
LE-032-...	97	49	51	17	9.25	93	45	12	12	120	42
LE-040-...	115	58	58.2	21	11	112	55	12	16	130	43
LE-050-...	137	70	70.2	25	18.8	134	65	15	20	143	49
LE-063-...	152	85	85.2	25	15.3	147	80	15	20	161	49

Order number*	L3	Ø N	O	Ø P	Q	S	T	U	V	Z	CH 1
LE-032-...	31	6.6	12	11	6.5	M6	78	61	32.5	74	15
LE-040-...	37	6.6	12	11	6.5	M6	84	69	38	87	15
LE-050-...	34	9	16	15	8.5	M8	100	85	46.5	104	20
LE-063-...	51	9	16	15	9	M8	105	100	56.5	119	20

\* Please complete according to order code.