






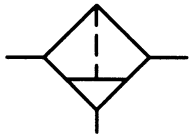
	<p><b>Series FX</b> Filter 12.042</p>	
	<p><b>Series RX</b> Pressure regulator 12.044</p> <p><b>Series FRX</b> Filter/regulator 12.046</p>	
	<p><b>Series OX</b> Lubricator 12.048</p> <p><b>Series FROX</b> Two-piece air service unit 12.050</p>	
	<p><b>Series KX</b> Ball valve 12.052</p> <p><b>Series VMX</b> 3/2-way inline valve 12.053</p>	
	<p><b>Series DAX</b> Soft start valve 12.054</p> <p><b>Series TX</b> Distribution block and pressure switch 12.055</p> <p><b>Accessories for series X</b> 12.060</p>	



**Order code**

FX-12-00-5-1201

Series	Size	Pressure range	Filter element	Options for digit No. 1
FX* = standard 5 µm	14 = G1/4 (X1) 37 = G3/8 (X1)	00 = standard	5* = 5 µm 3 = 0,3 µm 1 = 0,01 µm A = activated carbon filter	1* = polycarbonate bowl 3 = metal bowl with sight glass 4 = polycarbonate bowl with guard
FXA = activated carbon filter	12 = G1/2 (X2) 34 = G3/4 (X2)			<b>Options for digits No. 2, 3, 4</b> 201* = semi-automatic drain 301 = auto drain
FXF = finefilter 0,3 µm				
FXM = microfilter 0,01 µm				

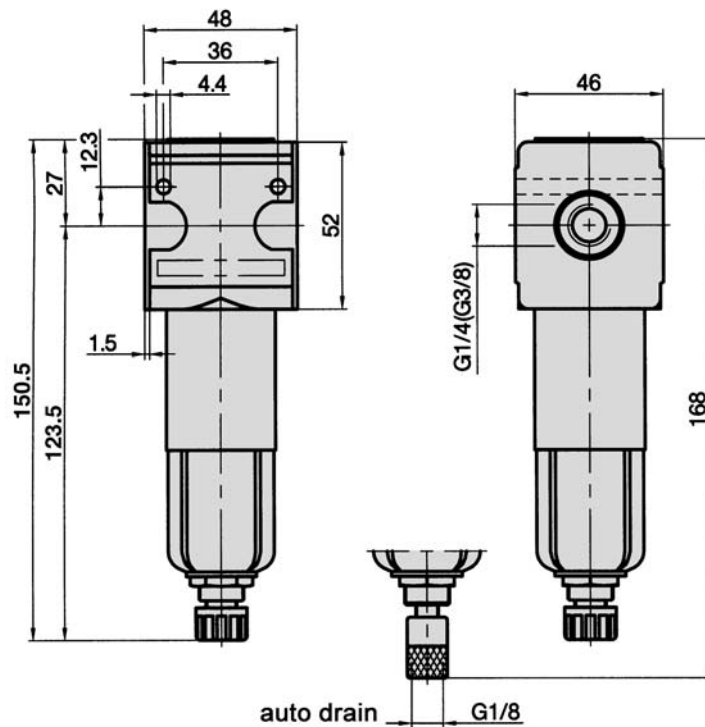
**Design and function**

The filter operates on the centrifugal force principle with a sintered filter.  
The filter should be inspected regularly to avoid the build up of condensate in the filter bowl. Various filter elements can be installed depending on the particular application.  
Easy block assembly for components to be connected in series.  
The components of series X can be easily connected by using the coupling kit KPX.  
Series FXA, FXF and FXM are only available in size 12 and 14.  
For additional accessories see pages 12.060.  
The FXA series is only available as option 1001 or 2001. The bowl is always without drain.

Order number Please complete according to order code.	FX-14-00-...	FX-37-00-...	FX-12-00-...	FX-34-00-...
<b>Connection size</b>	G1/4	G3/8	G1/2	G3/4
<b>Serie</b>	X1		X2	
<b>Nominal size*</b>	2100 NI/min (2.134 Cv)		4000 NI/min (4.065 Cv)	
<b>Mounting</b>	vertically, drain plug at bottom			
<b>Input range</b>	0 ... 16 bar (0 ... 232 psi) Min. 1.5 bar with auto drain Max. 20 bar with metal bowl		0 ... 16 bar (0 ... 232 psi) 1.5 ... 12 bar with auto drain Max. 20 bar with metal bowl	
<b>Temperature range</b>	0 °C ... + 60 °C (+ 32 °F ... + 140 °F)			
<b>Bowl volume</b>	max. 25 cm <sup>3</sup>		max. 50 cm <sup>3</sup>	
<b>Weight*</b>	0.275 kg (0.606 lb.)		0.798 kg (1.759 lbs)	

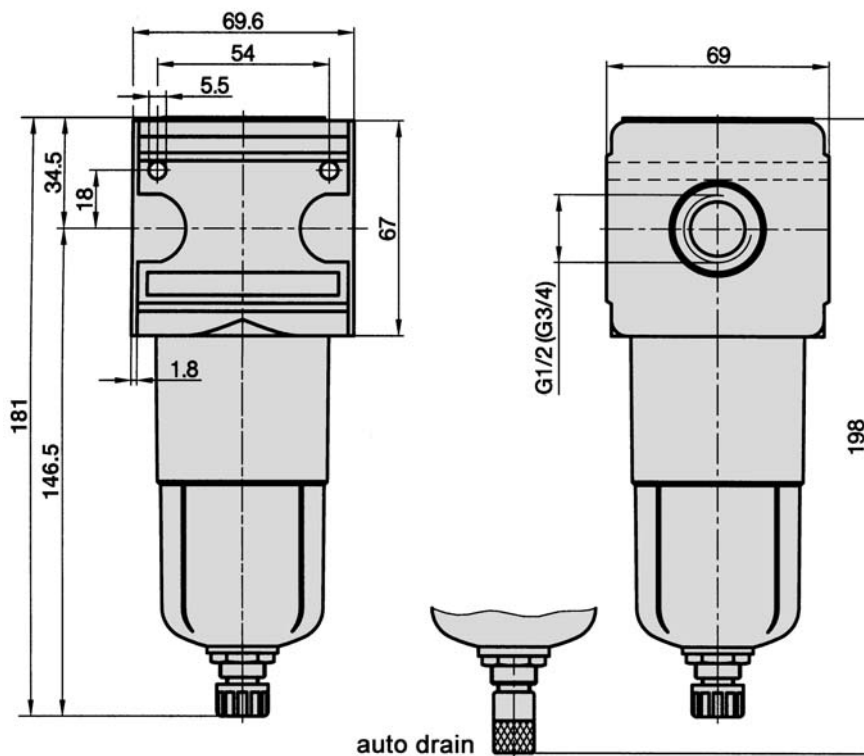
\* = standard type

**FX-14, FX-37**



Dimensions for activated carbon, fine, and micro filter on request.

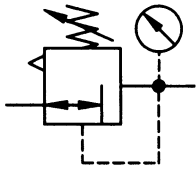
**FX-12, FX-34**



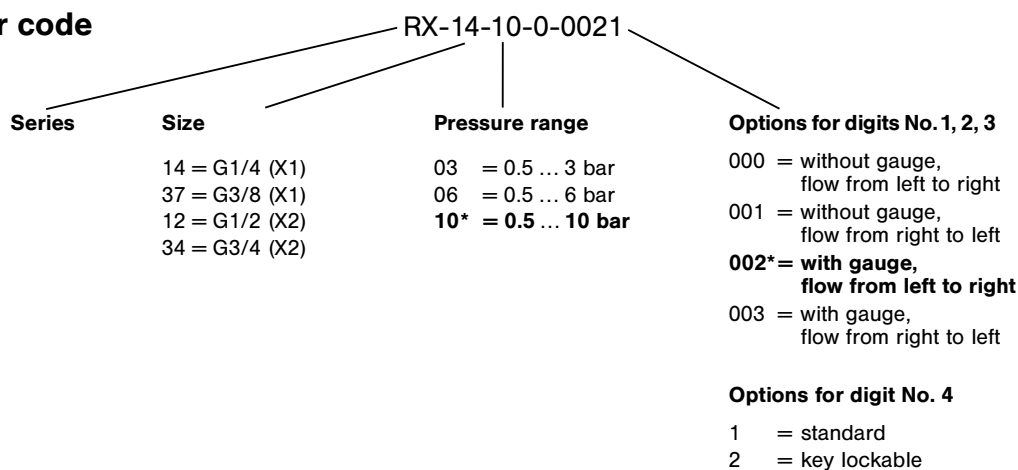
Dimensions for activated carbon, fine, and micro filter on request.

# Series X

Pressure regulator, model RX  
G1/4 to G3/4



## Order code



## Design and function

Pressure regulator with diaphragm and relieving function. The outlet pressure of the regulator remains constant regardless of incoming pressure changes. Once the desired pressure is achieved the adjusting knob can be fixed.

The components of series X can easily be connected by using the coupling kit KPX.

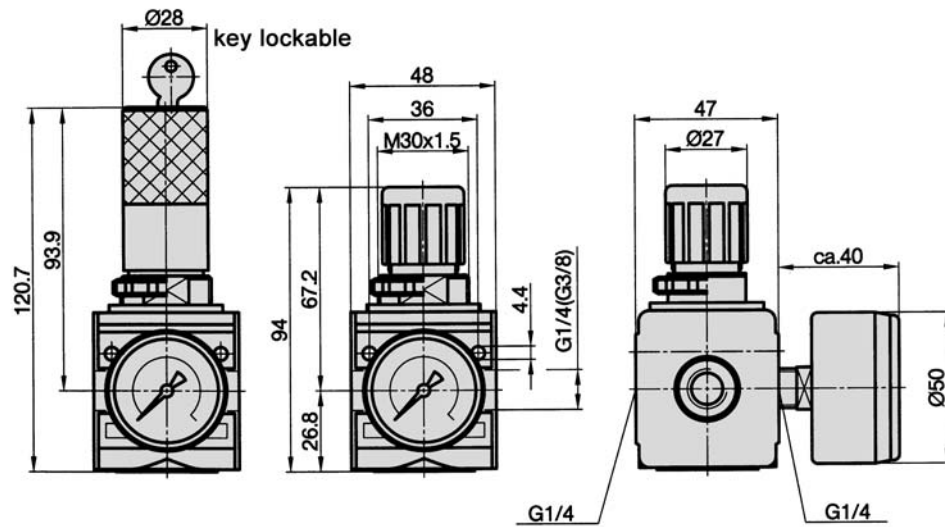
Components of size 12 and 34 can be connected to each other.

For additional accessories see pages 12.060.

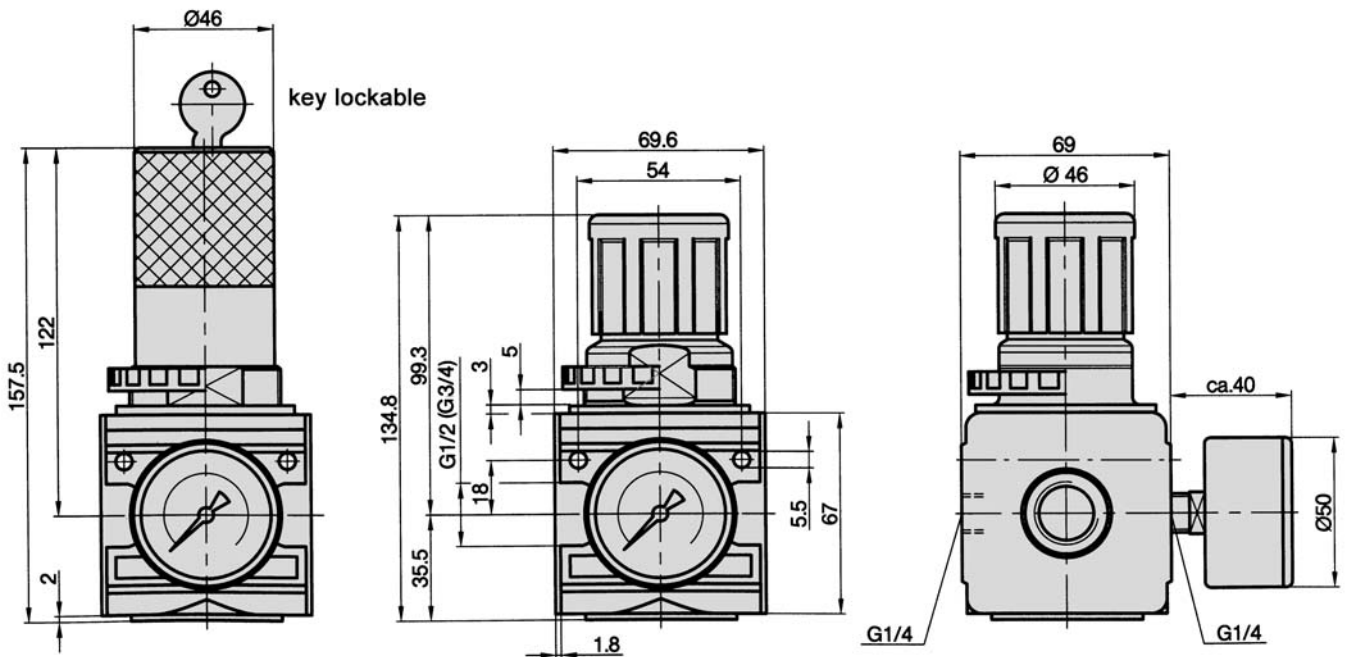
Order number Please complete according to order code.	RX-14-...	RX-37-...	RX-12-...	RX-34-...
<b>Connection size</b>	G1/4	G3/8	G1/2	G3/4
<b>Serie</b>	X1		X2	
<b>Mounting</b>	with bracket or in-line			
<b>Input range</b>	max. 16 bar (max. 232 psi)			
<b>Output range*</b>	0.5 ... 10 bar (7.25 ... 145 psi)* (others see order code)			
<b>Flow rate</b>	1500 NI/min (1.524 Cv)		5600 NI/min (5.691 Cv)	
<b>Temperature range</b>	0 °C ... + 60 °C (+ 32 °F ... + 140 °F)			
<b>Weight without pressure gauge</b>	0.330 kg (0.727 lb.) 0.530 kg key lockable (1.168 lbs.)		0.850 kg (1.874 lb.) 1.050 kg key lockable (2.315 lbs.)	

\* = standard type

**RX-14, RX-37**



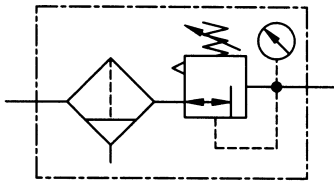
**RX-12, RX-34**



The main body of the regulator has two G1/4 ports for gauge mounting. Either port may be used allowing the user to choose the direction of flow.  
 (Note: The second port must be plugged.)

# Series X

Filter/regulator, model FRX  
G1/4 to G3/4



## Order code

FRX-14-10-5-1221

### Series

### Size

14 = G1/4 (X1)  
37 = G3/8 (X1)  
12 = G1/2 (X2)  
34 = G3/4 (X2)

### Pressure range

03 = 0.5 ... 3 bar  
06 = 0.5 ... 6 bar  
10\* = 0.5 ... 10 bar

### Options for digit No. 1

1\* = polycarbonate bowl  
3 = metal bowl with sight glass  
4 = polycarbonate bowl with guard

### Options for digit No. 3

0 = without gauge,  
flow from left to right  
1 = without gauge,  
flow from right to left  
2\* = with gauge,  
flow from left to right  
3 = with gauge,  
flow from right to left

### Options for digit No. 2

2\* = semi-automatic  
drain  
3 = auto drain

### Options for digit No. 4

1 = standard  
2 = key lockable

## Design and function

The filter/regulator is a diaphragm style with relieving function. The filter includes a manual drain.

The outlet pressure of the regulator remains constant regardless of incoming pressure changes. Once the desired pressure is achieved the adjusting knob can be fixed.

The filter removes both solid and liquid particles from the incoming air. The bowl can be supplied with a semi-automatic (drains when pressure is shut off) or a fully auto drain.

The components of series X can easily be connected by using the coupling kit KPX.

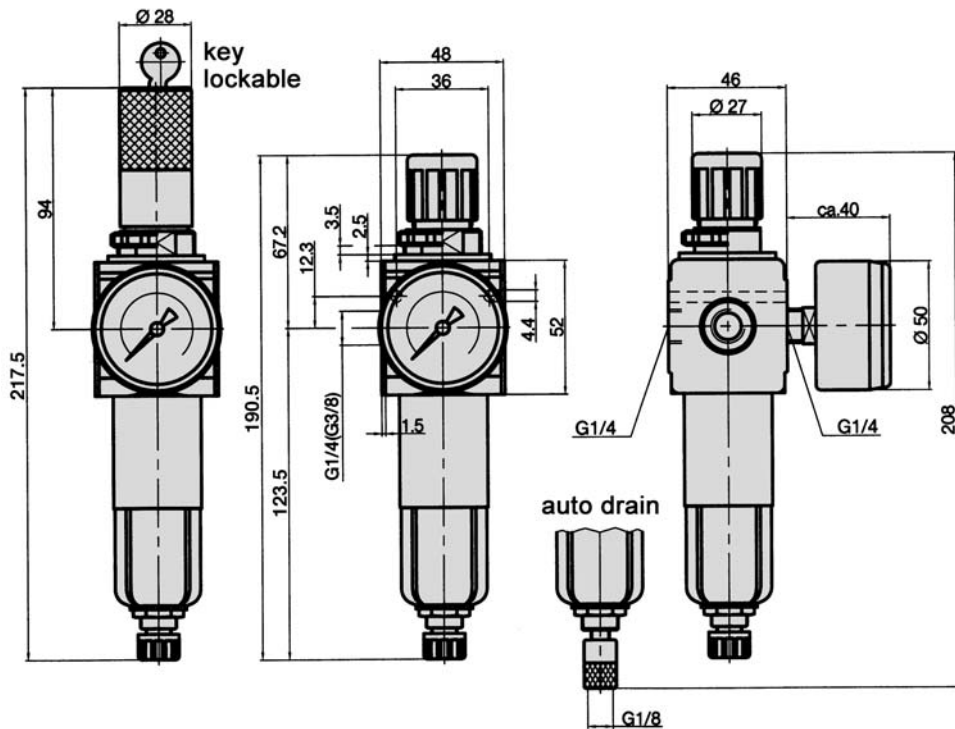
Components of size 12 and 34 can be connected to each other.

For additional accessories see pages 12.060.

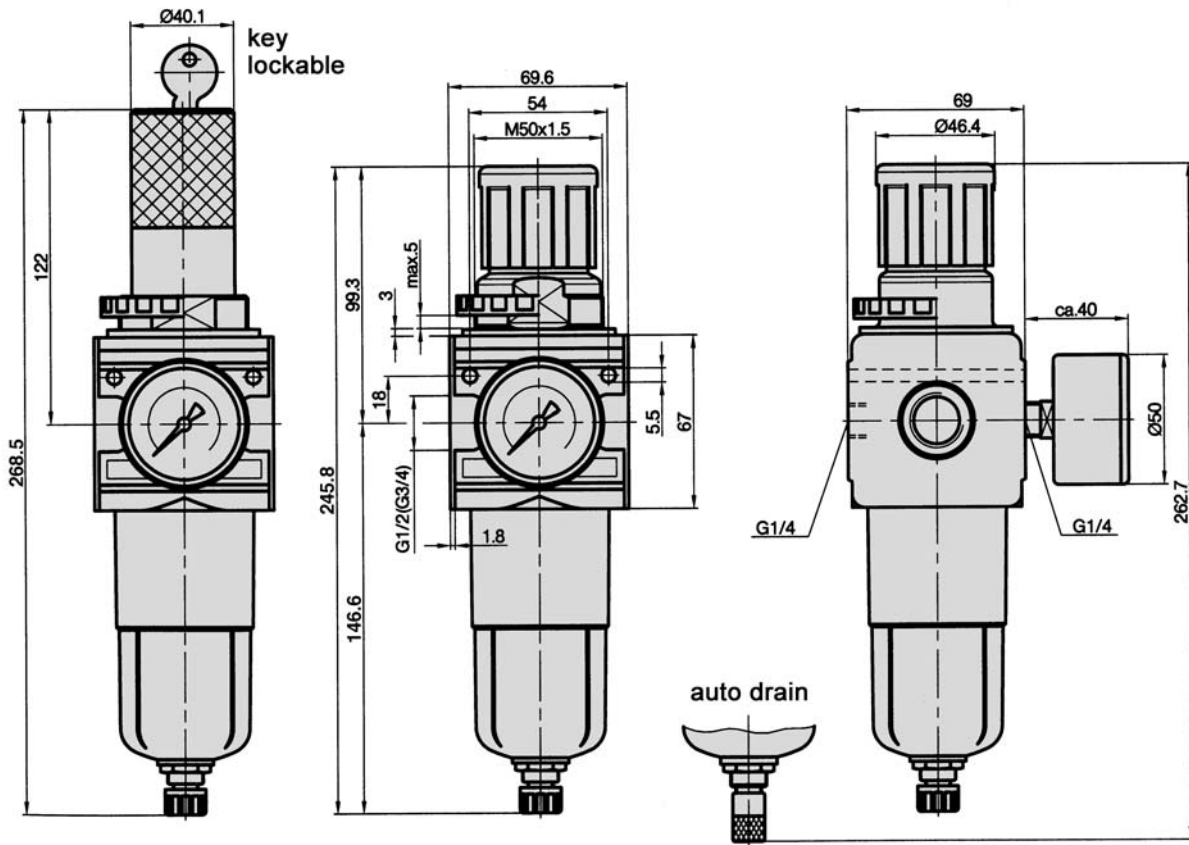
Order number Please complete according to order code.	FRX-14-...	FRX-37-...	FRX-12-...	FRX-34-...
Connection size	G1/4	G3/8	G1/2	G3/4
Serie	X1		X2	
Mounting	vertically, drain plug at bottom			
Input range	max. 16 bar (max. 232 psi) 1.5 ... 10 bar with auto drain		max. 16 bar (max. 232 psi) 1.5 ... 12 bar with auto drain	
Output range*	0.5 ... 10 bar (7.25 ... 145 psi)* (others see order code)			
Flow rate*	1500 NI/min (1.524 Cv)		3500 NI/min (3.557 Cv)	
Filter element	5 µm			
Bowl volume	25 cm <sup>3</sup>		50 cm <sup>3</sup>	
Temperature range	0 °C ... + 60 °C (+ 32 °F ... + 140 °F)			
Weight without pressure gauge*	0.330 kg (0.727 lb.) 0.530 kg key lockable (1.168 lbs.)		0.850 kg (1.874 lb.) 1.050 kg key lockable (2.315 lbs.)	

\* = standard type

**FRX-14, FRX-37**

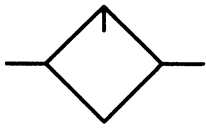


**FRX-12, FRX-34**

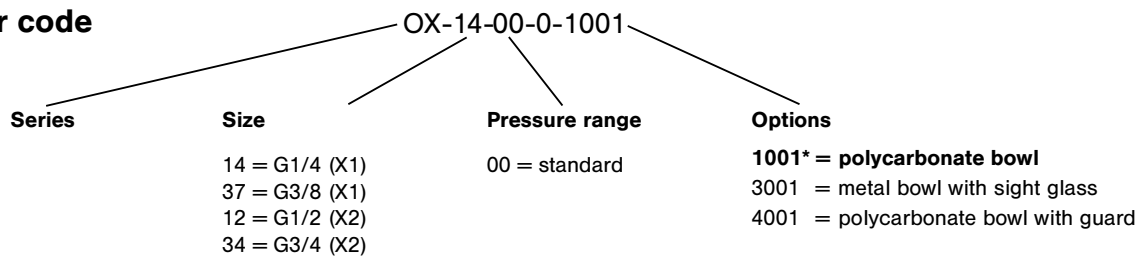


The main body of the regulator has two G1/4 ports for gauge mounting. Either port may be used allowing the user to choose the direction of flow.  
 (Note: The second port must be plugged.)





**Order code**



**Design and function**

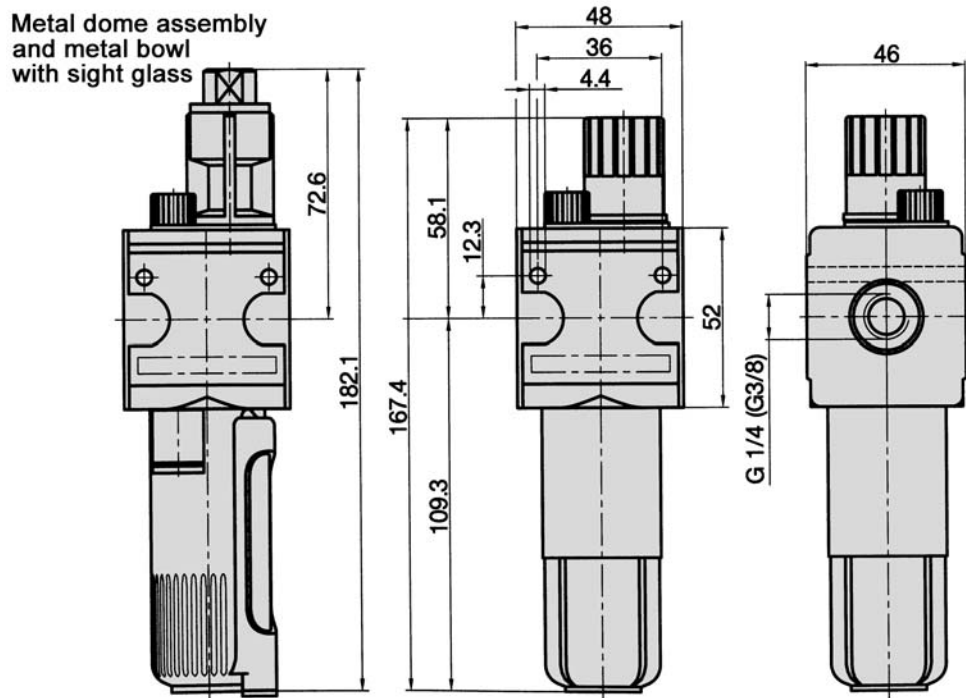
The lubricator has a proportional adjusting screw for adjustment of the oil/air mix. The components of series X can easily be connected by using the coupling kit KPX. Components of size 12 and 34 can be connected to each other. For additional accessories see page 12.060.

Order number <small>Please complete according to order code.</small>	OX-14-00-0-...	OX-37-00-0-...	OX-12-00-0-...	OX-34-00-0-...
<b>Connection size</b>	G1/4	G3/8	G1/2	G3/4
<b>Serie</b>	X1		X2	
<b>Mounting</b>	vertically			
<b>Input range</b>	max. 16 bar, max. 20 bar with metal bowl (max. 232 psi, max. 290 psi)			
<b>Flow rate*</b>	1800 NI/min (1.829 Cv)		5000 NI/min (5.081 Cv)	
<b>Bowl volume</b>	50 cm <sup>3</sup>		125 cm <sup>3</sup>	
<b>Type of oil</b>	HL 25 according to DIN 51524 – ISO VG 32			
<b>Temperature range</b>	0 °C ... + 60 °C (+ 32 °F ... + 140 °F)			
<b>Weight*</b>	0.330 kg (0.727 lb.)		0.690 kg (1.521 lbs.)	

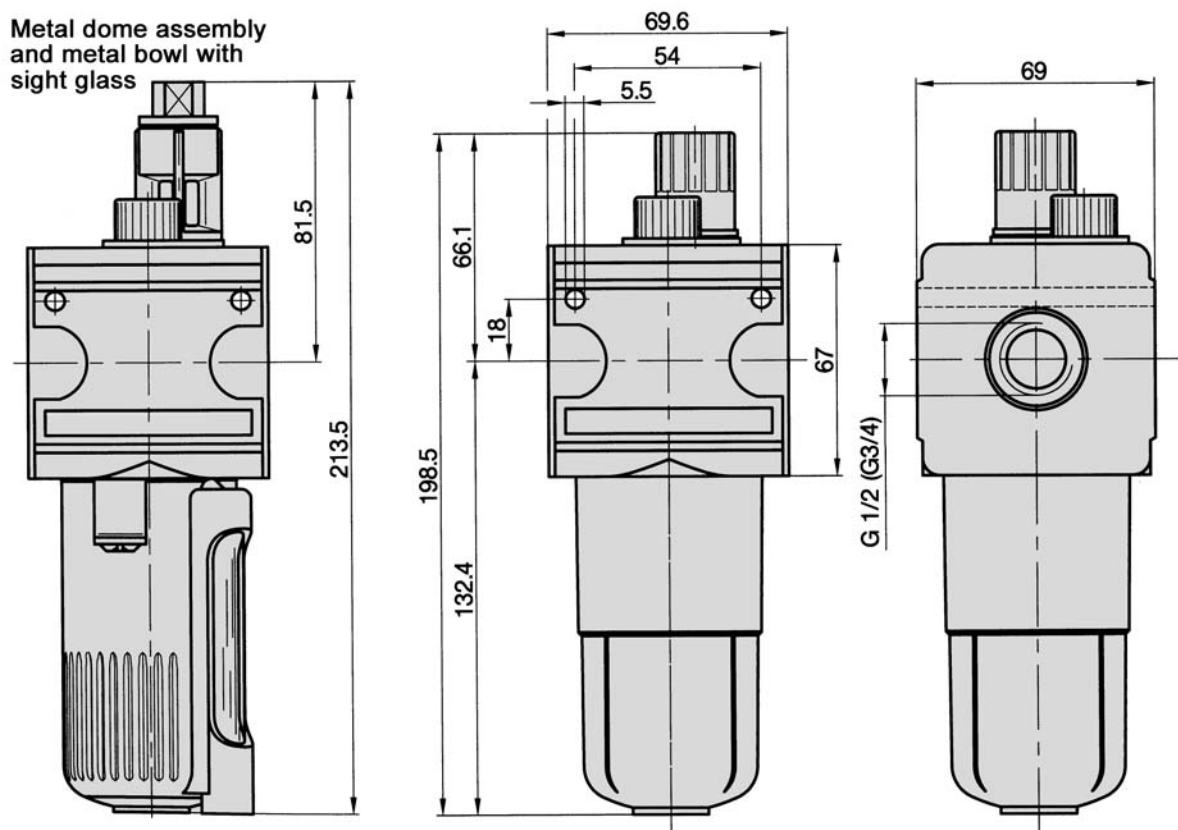
\* = standard type



**OX-14, OX-37**



**OX-12, OX-34**



# Series X

Two piece air service unit, model FROX  
G1/4 to G3/4



## Order code

FROX-14-10-5-1221

Series

Size

14 = G1/4 (X1)  
37 = G3/8 (X1)  
12 = G1/2 (X2)  
34 = G3/4 (X2)

Pressure range

03 = 0.5 ... 3 bar  
06 = 0.5 ... 6 bar  
10\* = 0.5 ... 10 bar

Options for digit No. 1

1\* = polycarbonate bowl  
3 = metal bowl with sight glass  
4 = polycarbonate bowl with guard

Options for digit No. 3

0 = without gauge, flow from left to right  
1 = without gauge, flow from right to left  
2\* = with gauge, flow from left to right  
3 = with gauge, flow from right to left

Options for digit No. 2

2\* = semi-automatic drain  
3 = auto drain

Options for digit No. 4

1 = standard  
2 = key lockable

## Design and function

The air service unit includes a filter/regulator, and lubricator.

The filter/regulator is a diaphragm style with relieving feature. The filter includes a manual drain.

The outlet pressure of the regulator remains constant regardless of incoming pressure changes. Once the desired pressure is achieved the adjusting knob can be fixed.

The filter removes both solid and liquid particles from the incoming air. The bowl can be supplied with a semi-automatic (drains when pressure is shut off) or auto drain.

The lubricator has a proportional adjusting.

The components of series X can easily be connected by using the coupling kit KPX.

Components of size 12 and 34 can be connected to each other.

For additional accessories see pages 12.060.

Order number Please complete according to order code.	FROX-14-...	FROX-37-...	FROX-12-...	FROX-34-...
Connection size	G1/4	G3/8	G1/2	G3/4
Serie	X1		X2	
Mounting	vertically, drain plug at bottom			
Input range	max. 16 bar (max. 232 psi) 1.5 ... 10 bar with auto drain		max. 16 bar (max. 232 psi) 1.5 ... 12 bar with auto drain	
Output range*	0.5 ... 10 bar (7.25 ... 145 psi)* (others see order code)			
Flow rate	1150 NI/min (1.168 Cv)		3600 NI/min (3.659 Cv)	
Filter element	5 µm			
Bowl volume	25 cm <sup>3</sup> condensate, 50 cm <sup>3</sup> oil		50 cm <sup>3</sup> condensate, 125 cm <sup>3</sup> oil	
Temperature range	0 °C ... + 60 °C (+ 32 °F ... + 140 °F)			
Weight without pressure gauge*	0.850 kg (1.874 lbs.)		1.730 kg (3.814 lbs.)	

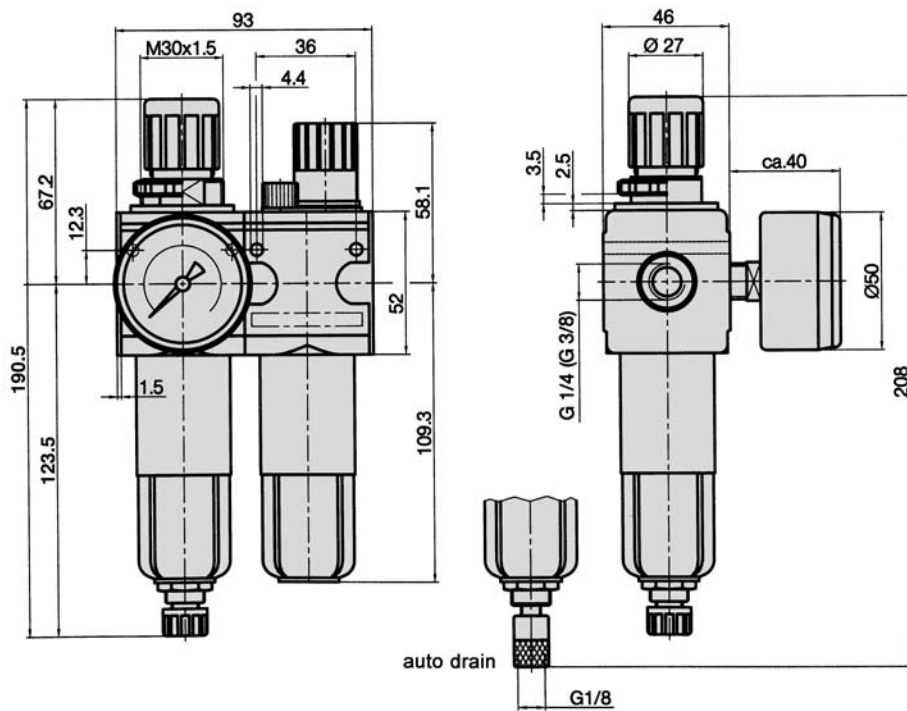
\* = standard type

# Series X

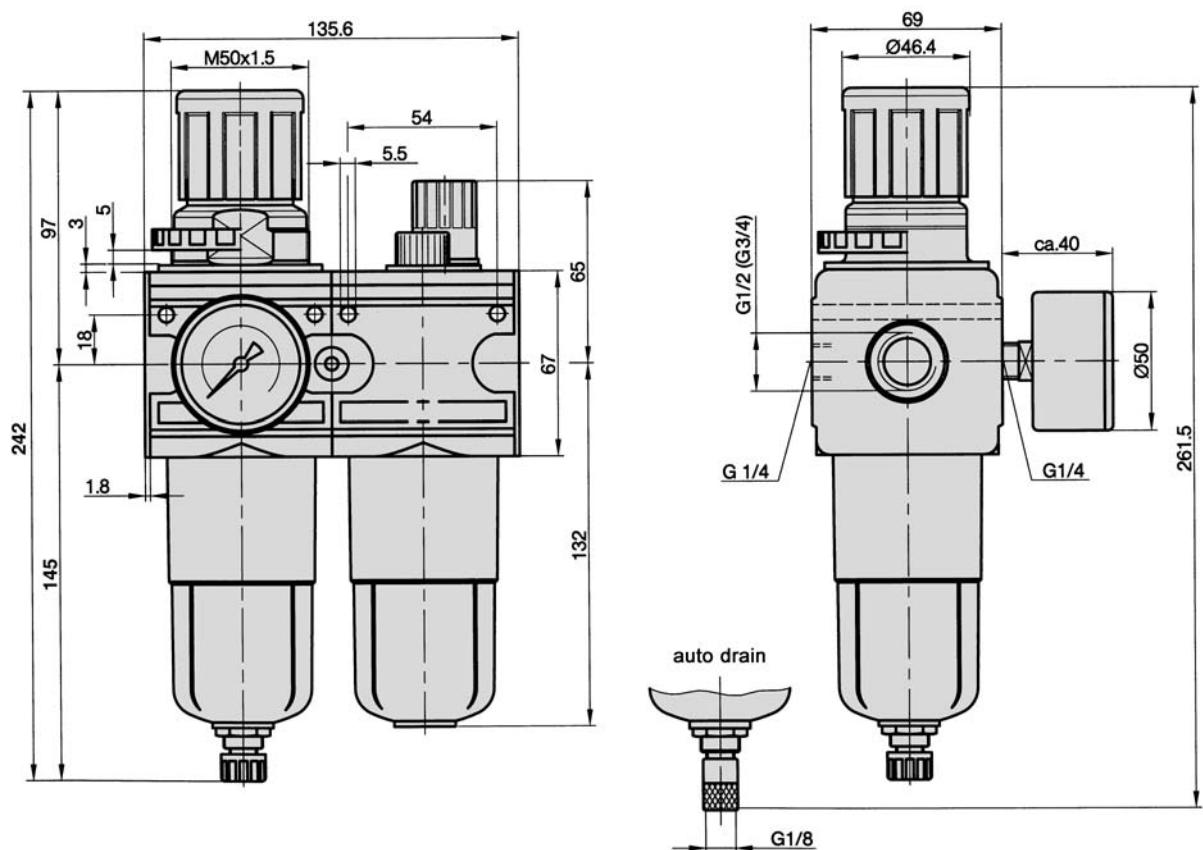
Two piece air service unit, model FROX  
G1/4 to G3/4



## FROX-14, FROX-37



## FROX-12, FROX-34

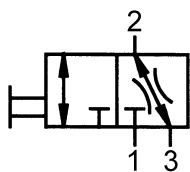


The main body of the regulator has two G1/4 ports for gauge mounting. Either port may be used allowing the user to choose the direction of flow.  
(Note: The second port must be plugged.)

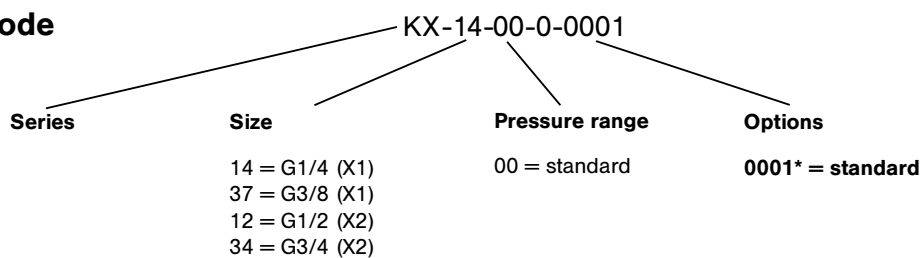
# Series X

Lockable ball valve, model KX

G1/4 to G3/4



## Order code



### Design and function

3/2-way ball valve for the shut-off of downstream air.

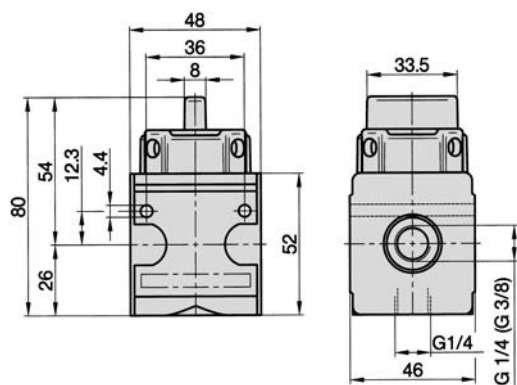
Easy block assembly for components to be connected in series.

The components of series X can easily be connected by using the coupling kit KPX.

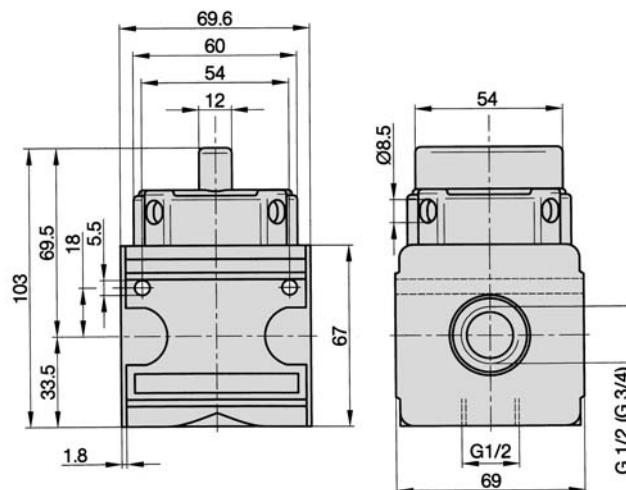
Components of size 12 and 34 can be connected to each other.

For additional accessories see page 12.060.

#### KX-14, KX-37



#### KX-12, KX-34

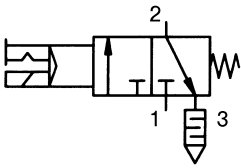


Order number Please complete according to order code.	KX-14-00-0-...	KX-37-00-0-...	KX-12-00-0-...	KX-34-00-0-...
<b>Connection size</b>	G1/4	G3/8	G1/2	G3/4
<b>Serie</b>	X1		X2	
<b>Mounting</b>	with bracket or in-line			
<b>Input range</b>	max. 16 bar (max. 232 psi)			
<b>Flow rate</b>	2800 NI/min (2.845 Cv)		11000 NI/min (11.176 Cv)	
<b>Temperature range</b>	0 °C ... + 60 °C (+ 32 °F ... + 140 °F)			
<b>Weight*</b>	0.360 kg (0.794 lb.)		0.820 kg (1.808 lbs.)	

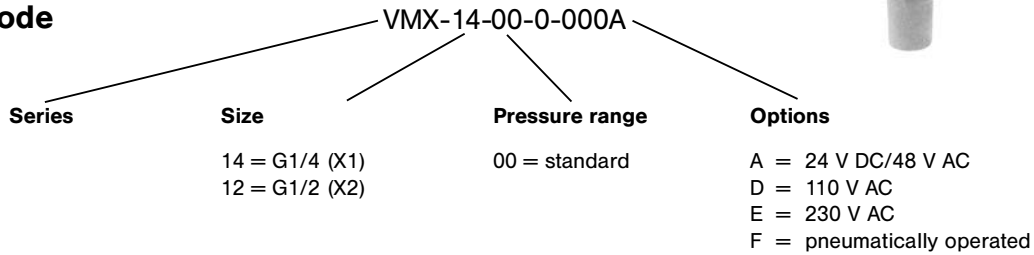
\* = standard type

# Series X

3/2-way inline valve, model VMX  
G1/4, G1/2



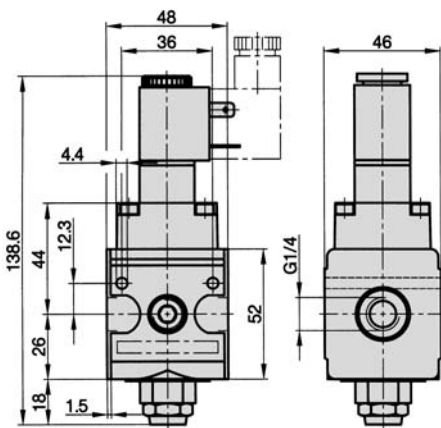
## Order code



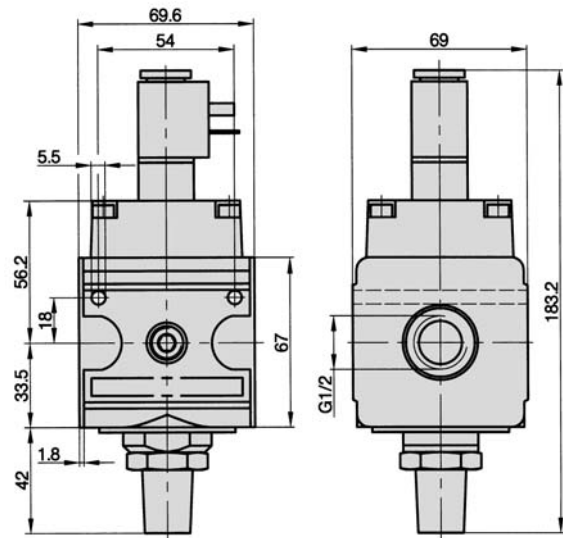
## Design and function

Solenoid or pneumatically operated 3/2-way poppet valve with spring return. The solenoid and plug socket are supplied with the unit. Easy block assembly for components to be connected in series. The components of series X can be easily connected by using the coupling kit KPX. For additional accessories see page 12.060.

### VMX-14



### VMX-12

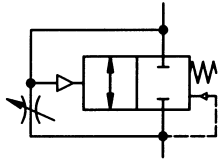


Order number	VMX-14-00-0-...	VMX-12-00-0-...
Please complete according to order code.		
Connection size	G1/4	G1/2
Serie	X1	X2
Mounting	with bracket or in-line	
Pressure range	2 ... 10 bar (29 ... 145 psi)	
Duty cycle	100 %	
Degree of protection	IP 65 according to EN 60529	
Flow rate	1100 NI/min (1.118 Cv)	4000 NI/min (4.065 Cv)
Temperature range	0 °C ... + 50 °C (+ 32 °F ... + 122 °F)	
Weight	0.450 kg (0.992 lb.)	1.050 kg (2.315 lbs.)

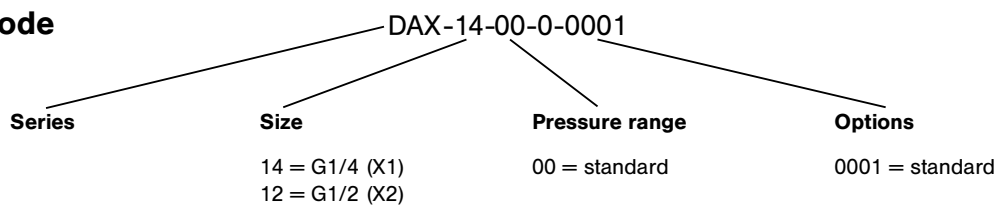
# Series X

Soft start valve, model DAX

G1/4, G1/2



## Order code



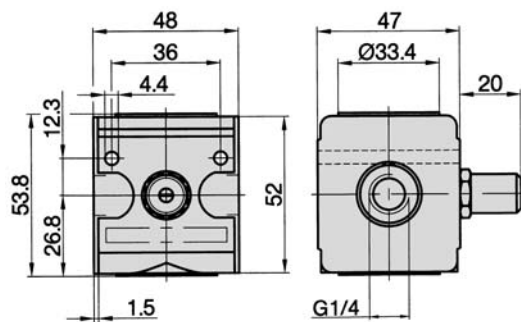
## Design and function

Soft start valve with adjustable filling time. This valve can be used to slowly increase the system pressure through an adjustable throttle. When 50 % of the incoming pressure is achieved the valve opens completely.

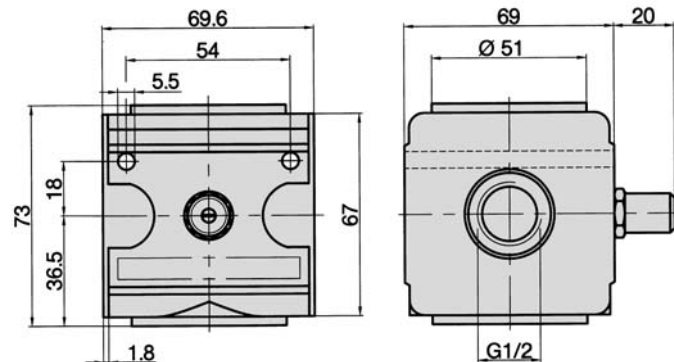
The components of series X can be easily connected by using the coupling kit KPX.

For additional accessories see page 12.060.

### DAX-14



### DAX-12



Order number	DAX-14-00-0-0001	DAX-12-00-0-0001
Connection size	G1/4	G1/2
Serie	X1	X2
Mounting	with bracket or in-line	
Pressure range	2 ... 16 bar (29 ... 232 psi)	
Flow rate	1000 NI/min (1.016 Cv)	4000 NI/min (4.065 Cv)
Temperature range	0 °C ... + 60 °C (+ 32 °F ... + 140 °F)	
Weight	0.330 kg (0.727 lb.)	0.770 kg (1.697 lbs.)

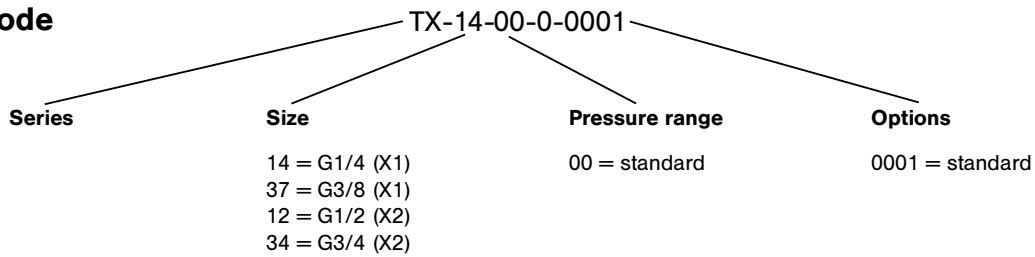


# Series X

Distribution block and pressure switch, model TX  
G1/4 to G3/4



## Order code



## Design and function

Distribution manifold block for additional air supply or other components.

This unit can be combined with pressure switch PE-18-01-40 (see page 8.181) to provide a preset pressure indicating system when combined with the air service units.

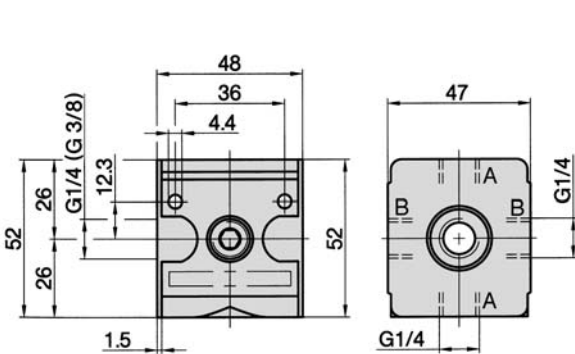
Easy block assembly for components to be connected in series.

The components of series X can be easily connected by using the coupling kit KPX.

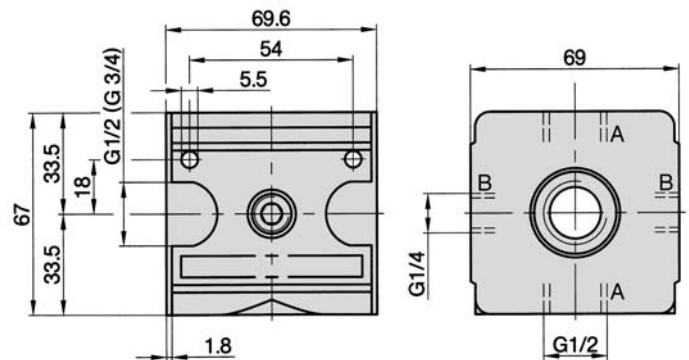
Components of size 12 and 34 can be connected to each other.

For additional accessories see page 12.060.

### TX-14, TX-37



### TX-12, TX-34



Order number	TX-14-00-0-0001	TX-37-00-0-0001	TX-12-00-0-0001	TX-34-00-0-0001
Connection size	G1/4	G3/8	G1/2	G3/4
Outlets	4 x G1/4		2 x G1/2, 2 x G1/4	
Series	X1		X2	
Mounting	with bracket or in-line			
Pressure range	0 ... 16 bar (0 ... 232 psi)			
Flow rate	2500 NI/min (2.540 Cv) 2000 NI/min (outlet A*) (2.032 Cv) 900 NI/min (outlet B*) (0.915 Cv)		11000 NI/min (11.176 Cv) 8750 NI/min (outlet A*) (8.892 Cv) 1340 NI/min (outlet B*) (1.362 Cv)	
Temperature range	0 °C ... + 60 °C (+ 32 °F ... + 140 °F)			
Weight*	0.330 kg (0.727 lb.)		0.690 kg (1.521 lbs.)	

\* = outlet ports see below.



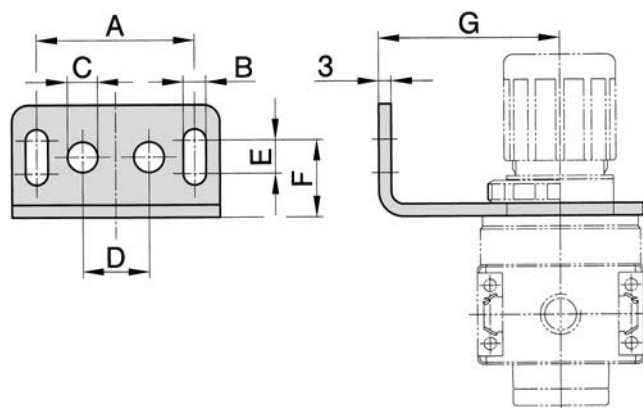
## Series X

Accessories for air service units

G1/4 to G3/4



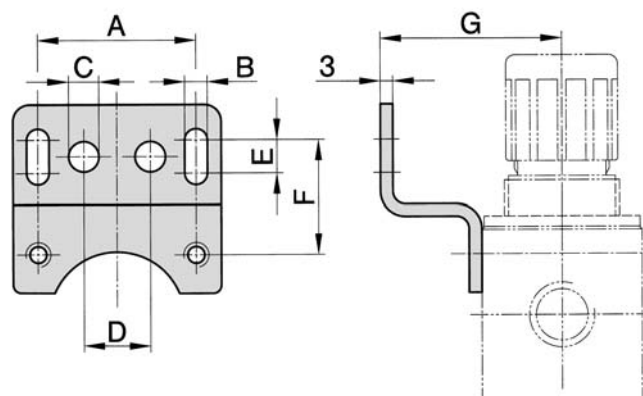
### Mounting brackets WK-30, WK-50



The mounting nut (see page 12.061) must be ordered separately.

Order number	Serie	A	B	C	D	E	F	G
WK-30	X1	38	5.4	-	-	8	18.5	43.5
WK-50	X2	50	6.4	10	20	13	24	54.5

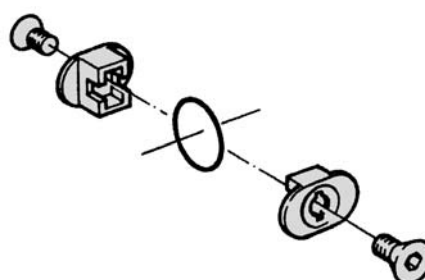
### Mounting brackets WX-11, WX-33



The mounting nut (see page 12.061) must be ordered separately.

Order number	Serie	A	B	C	D	E	F	G	H
WX-11	X1	38	5.4	-	-	8	27.5	48.5	36
WX-33	X2	50	6.4	10	20	13	33	51.5	54

### Coupling kits KPX-11, KPX-33



#### Mounting set for the assembly of components of series X

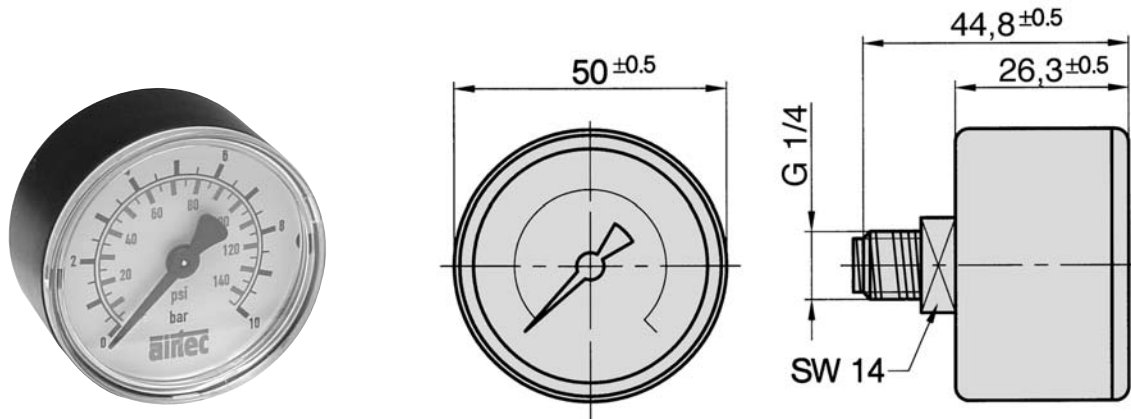
KPX-11 for series X1

KPX-33 for series X2

## Series X

Accessories for air service units  
G1/4 to G3/4

### Pressure gauge MXA-50



Sealing for assembly of gauge is included.

Order number	MXA-50-06-14	MXA-50-10-14	MXA-50-16-14
<b>Ranges</b>	0 ... 6 bar (0 ... 87 psi)	0 ... 10 bar (0 ... 145 psi)	0 ... 16 bar (0 ... 232 psi)
<b>Application</b>	Constant load 3/4 x scale value Alternating load 2/3 x scale value		
<b>Materials</b>	Body : Plastic, highly shock resistant, black (ABS) Window : Plexiglass, convex, clipped-on Dial : Plastic, white with stop pin, scale black or blue Pointer : Plastic, black Movement : CuZn alloy Measuring element: Cu alloy		
<b>Temperature range</b>	- 20 °C ... + 60 °C (+ 32 °F ... + 140 °F)		
<b>Accuracy class</b>	2.5 according to EN 837-1		
<b>Temperature drift</b>	0.4 % / 10 K if deviation from normal temperature 20 °C (68 °F).		
<b>Weight</b>	0.071 kg (0.156 lb.)		

### Mounting nuts RM-30, RM-50



Order number	RM-30-K	RM-30-M	RM-30-Mv	RM-50-K
<b>Materials</b>	plastic	brass	brass (nickel-plated)	plastic
<b>Thread</b>	M 30 x 1.5 (serie X1)			M 50 x 1.5 (serie X2)