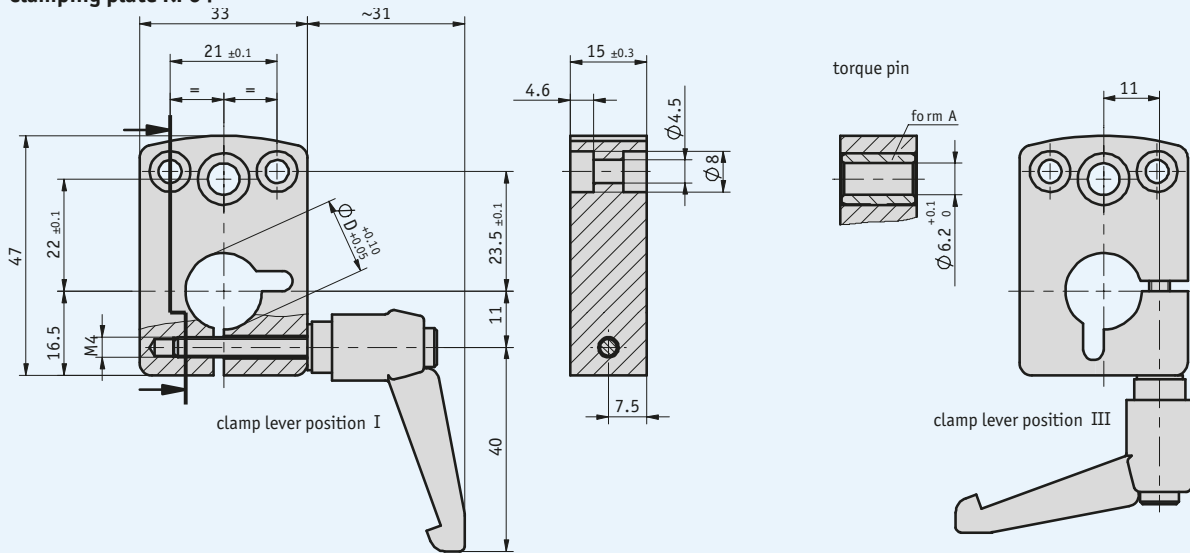


## Profile

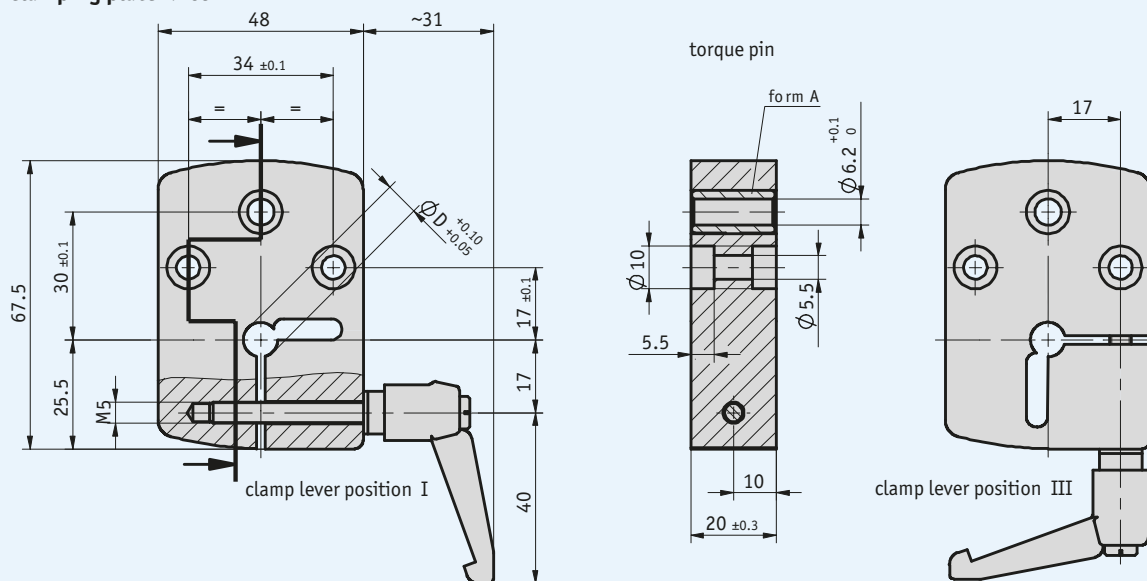
- KP04 for shaft diameters 8–15 mm
- KP09 for shaft diameters 8–20 mm
- Selectable clamp lever position
- Easy mounting and retrofitting



### Clamping plate KP04



### Clamping plate KP09



**Mechanical data**

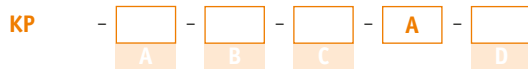
Feature	Technical data	Additional information
Housing	aluminum, anodized	
Clamp lever	plastic, engaging	

**Order**

■ **Order table**

Feature	Order text	Specification	Additional information
Version	04 09	A	
Bore Ø	... ...	B 8, 10, 12, 14, 15 C 8, 10, 12, 14, 15, 16, 18, 20	only with KP04 only with KP09
Clamp lever/position	I III	C mounting position I mounting position III	
Clamp lever	with without	D	

■ **Order code**



Scope of delivery: KP...